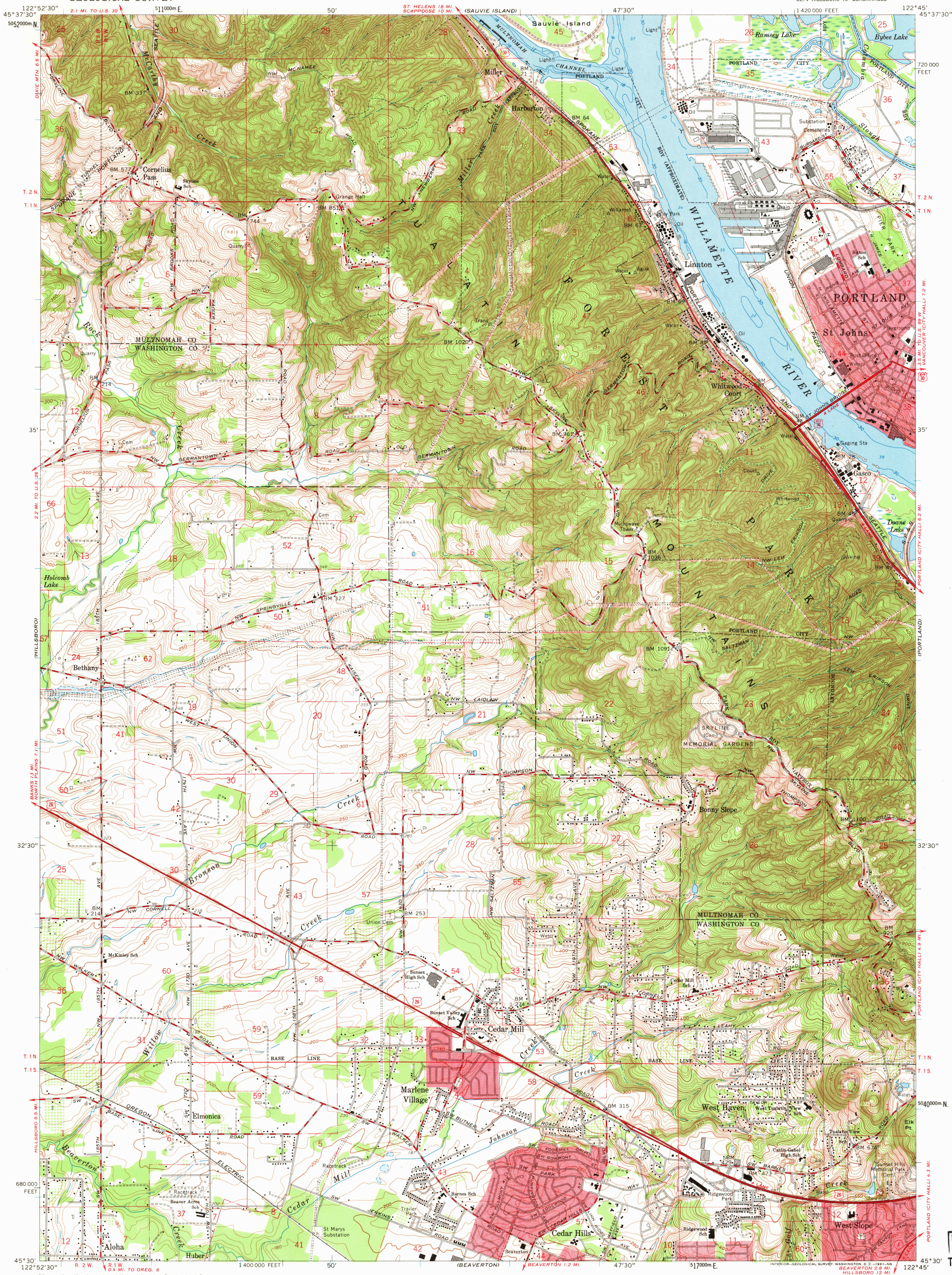


UNITED STATES
DEPARTMENT OF THE INTERIOR
GEOLOGICAL SURVEY

LINNTON QUADRANGLE
OREGON
7.5 MINUTE SERIES (TOPOGRAPHIC)
SE/4 HILLSBORO 15' QUADRANGLE



Mapped, edited, and published by the Geological Survey
Control by USGS, USC&GS, and State of Oregon
Topography from aerial photographs by photogrammetric methods 1954
Aerial photographs taken 1952. Field check 1954
Revised from aerial photographs taken 1960. Field check 1961
Selected hydrographic data compiled from USC&GS chart 6155 (1959)
This information is not intended for navigational purposes
Polyconic projection. 1927 North American datum
10,000-foot grid based on Oregon coordinate system, north zone
1000-meter Universal Transverse Mercator grid ticks,
zone 10, shown in blue
Red tint indicates areas in which only landmark buildings are shown
Dashed land lines indicate approximate locations
Fine red dashed lines indicate selected fence lines

TRUE NORTH
MAGNETIC NORTH
APPROXIMATE MAGNETIC DECLINATION, 1961

SCALE 1:24,000
CONTOUR INTERVAL 10 FEET
DATUM IS MEAN SEA LEVEL
DEPTH CURVES AND SOUNDINGS IN FEET—COLUMBIA RIVER DATUM
SHORELINE SHOWN REPRESENTS THE APPROXIMATE LINE OF MEAN HIGH WATER
THE MEAN RANGE OF TIDE IS APPROXIMATELY 2 FEET
THIS MAP COMPLIES WITH NATIONAL MAP ACCURACY STANDARDS
FOR SALE BY U.S. GEOLOGICAL SURVEY, DENVER 25, COLORADO OR WASHINGTON 25, D. C.
A FOLDER DESCRIBING TOPOGRAPHIC MAPS AND SYMBOLS IS AVAILABLE ON REQUEST

USGS
Historical File
Topographic Division
OREGON
QUADRANGLE LOCATION

ROAD CLASSIFICATION
Heavy-duty ——— Light-duty ———
Medium-duty ——— Unimproved dirt ———
U.S. Route ——— State Route ———
LINNTON, OREG.
SE/4 HILLSBORO 15' QUADRANGLE
N4530—W12245/7.5
1961

U.S.G.S.
FILE COPY
TOPOGRAPHIC DIVISION

1640