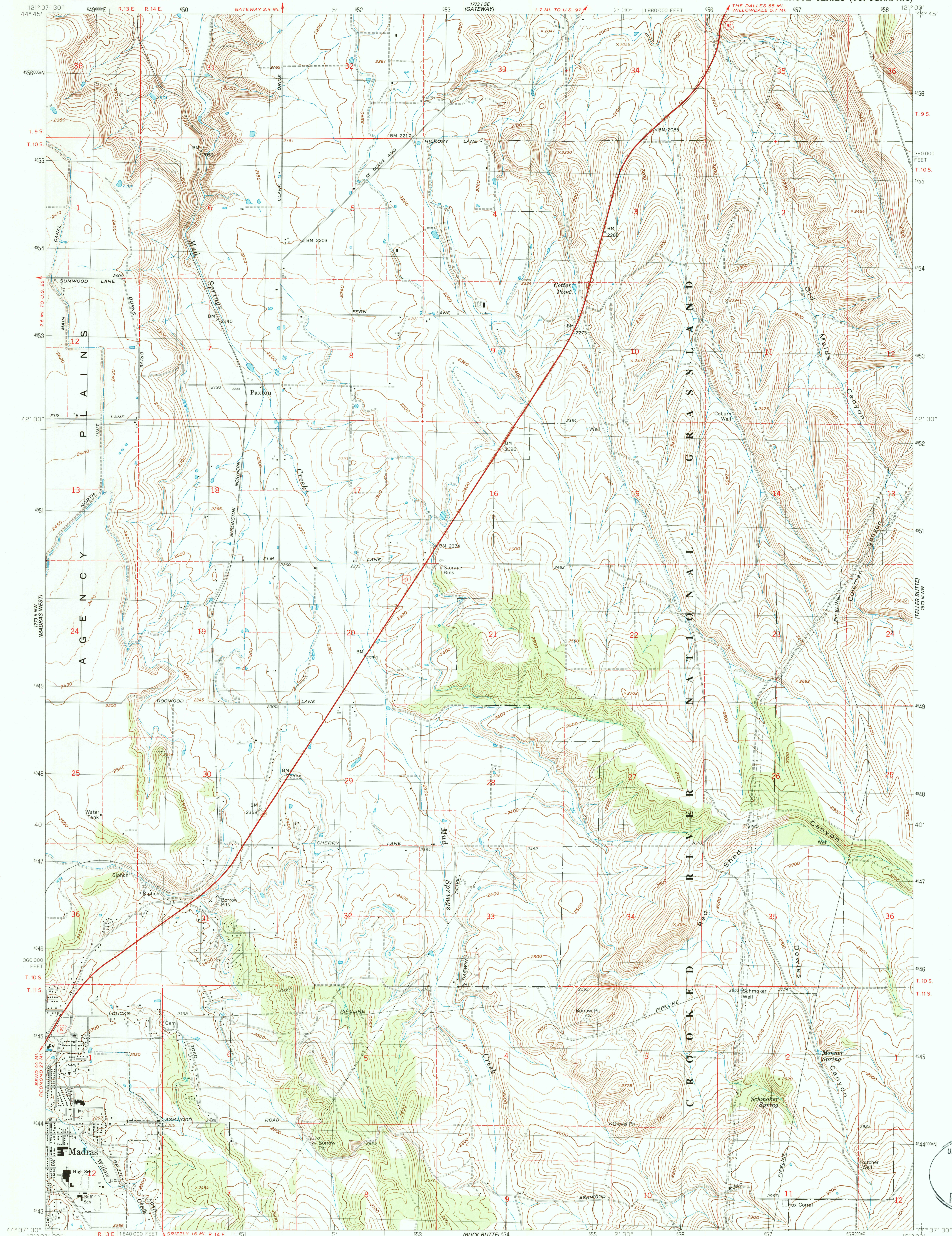


UNITED STATES  
DEPARTMENT OF THE INTERIOR  
GEOLOGICAL SURVEY

MADRAS EAST QUADRANGLE  
OREGON—JEFFERSON CO.  
7.5 MINUTE SERIES (TOPOGRAPHIC)

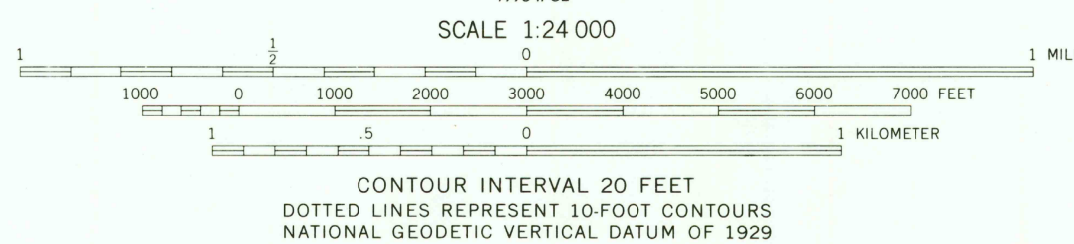
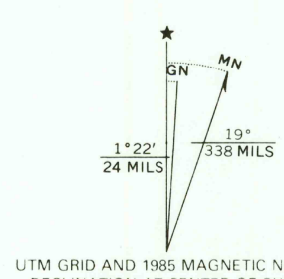


Mapped, edited, and published by the Geological Survey  
Revised in cooperation with U.S. Forest Service

Control by USGS and NOS/NOAA

Topography by photogrammetric methods from aerial  
photographs taken 1957 and from planetable surveys by  
U.S. Bureau of Reclamation. Field checked by USGS 1963  
Revised from aerial photographs taken 1982. Limited  
field check 1985. Map edit 1995

Projection and 10,000-foot grid ticks: Oregon coordinate  
system, north zone. 1000-meter Universal Transverse Mercator  
grid, zone 10. 1927 North American datum. To place on the  
predicted North American Datum 1983 move the projection lines 21  
meters north and 91 meters east as shown by dashed corner ticks  
There may be private inholdings within the boundaries of  
the National or State reservations shown on this map



ROAD CLASSIFICATION	
Heavy-duty	Light-duty
Medium-duty	Unimproved dirt
U.S. Route	

MADRAS EAST, OREG.  
44121-F1-TF-024

1985

DMA 1773 II NE—SERIES V892

