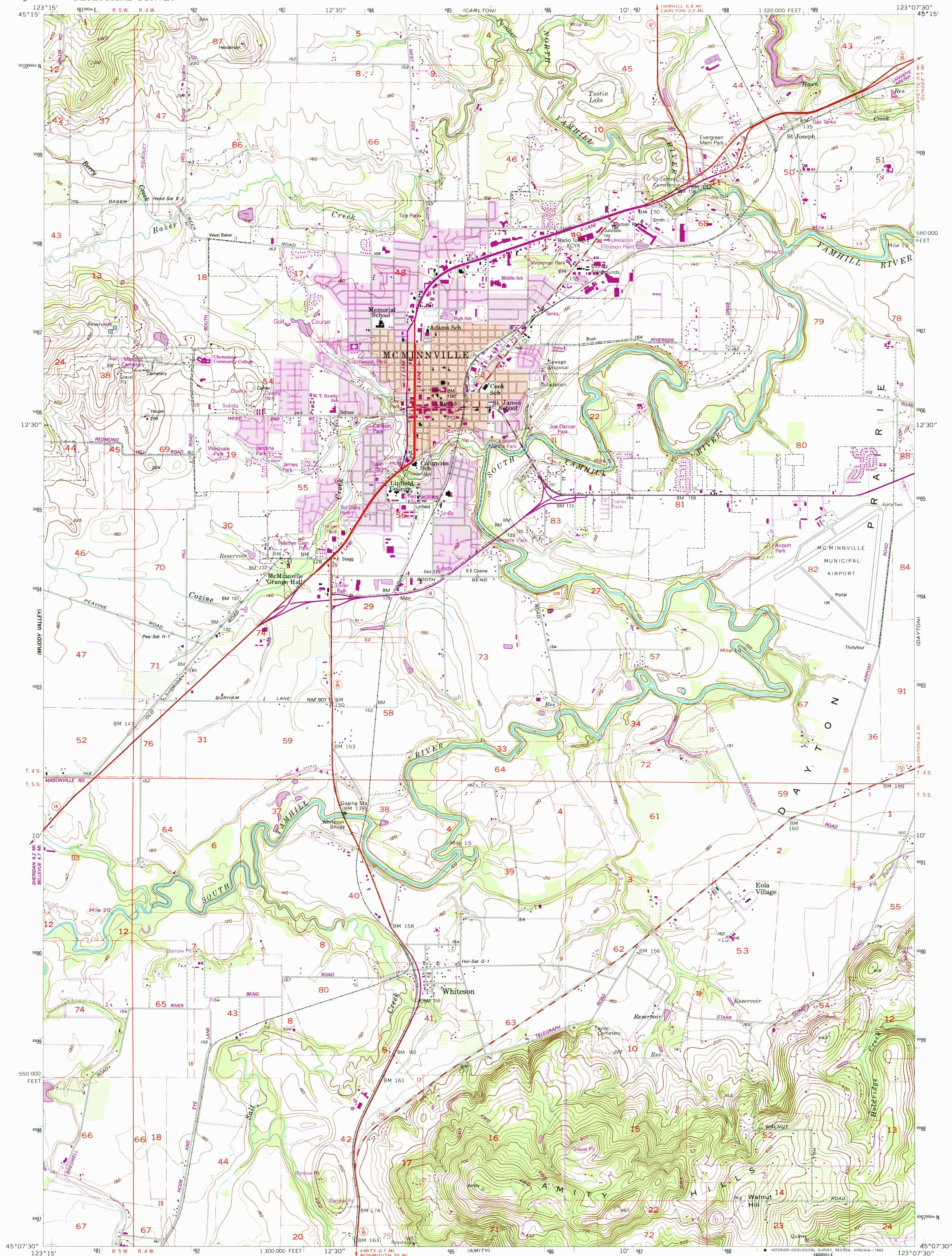
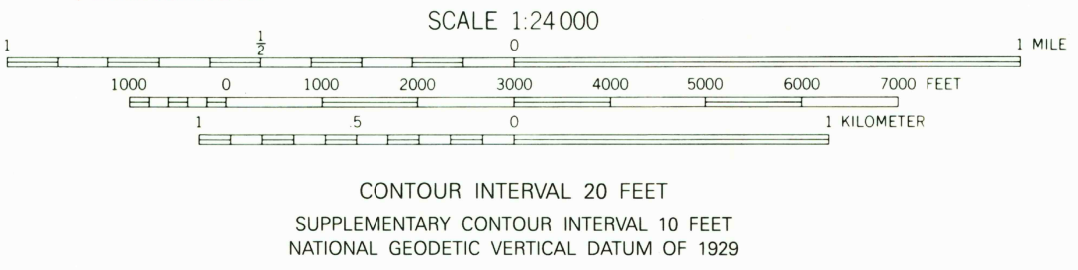
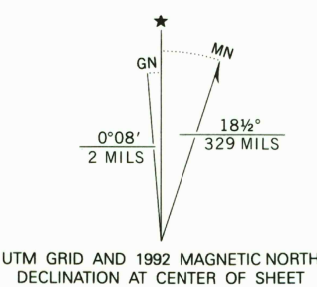


UNITED STATES  
DEPARTMENT OF THE INTERIOR  
GEOLOGICAL SURVEY

MC MINNVILLE QUADRANGLE  
OREGON-YAMHILL CO  
7.5 MINUTE SERIES (TOPOGRAPHIC)



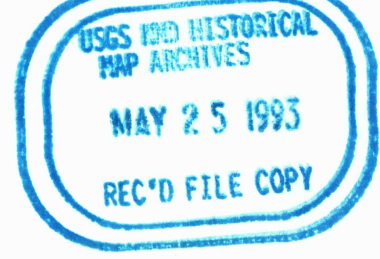
Produced by the United States Geological Survey  
Control by USGS, NOS/NOAA, USCE, and OSHD  
Compiled from aerial photographs taken 1954. Information shown  
in purple has been updated from aerial photographs taken 1987 and  
field checked. Map edited 1992. Conflicts may exist between  
some updated features and previously mapped contours  
North American Datum of 1927 (NAD 27). Projection and  
10,000-foot grid ticks: Oregon Coordinate System, north zone  
(Lambert Conformal Conic). 1000-meter Universal Transverse  
Mercator grid ticks, zone 10, shown in blue  
The difference between NAD 27 and North American Datum of  
1983 (NAD 83) for 7.5 minute intersections is given in USGS  
Bulletin 1875. The NAD 83 is shown by dashed corner ticks



ROAD CLASSIFICATION  
Heavy-duty ——— Light-duty ———  
Medium-duty ——— Unimproved dirt ———  
U. S. Route ——— State Route ———

MC MINNVILLE, OREG.  
45123-B2-TF-024

1957  
REVISED 1992  
DMA 1374 II NW-SERIES V892



THIS MAP COMPLIES WITH NATIONAL MAP ACCURACY STANDARDS  
FOR SALE BY U.S. GEOLOGICAL SURVEY  
DENVER, COLORADO 80225, OR RESTON, VIRGINIA 22092  
A FOLDER DESCRIBING TOPOGRAPHIC MAPS AND SYMBOLS IS AVAILABLE ON REQUEST