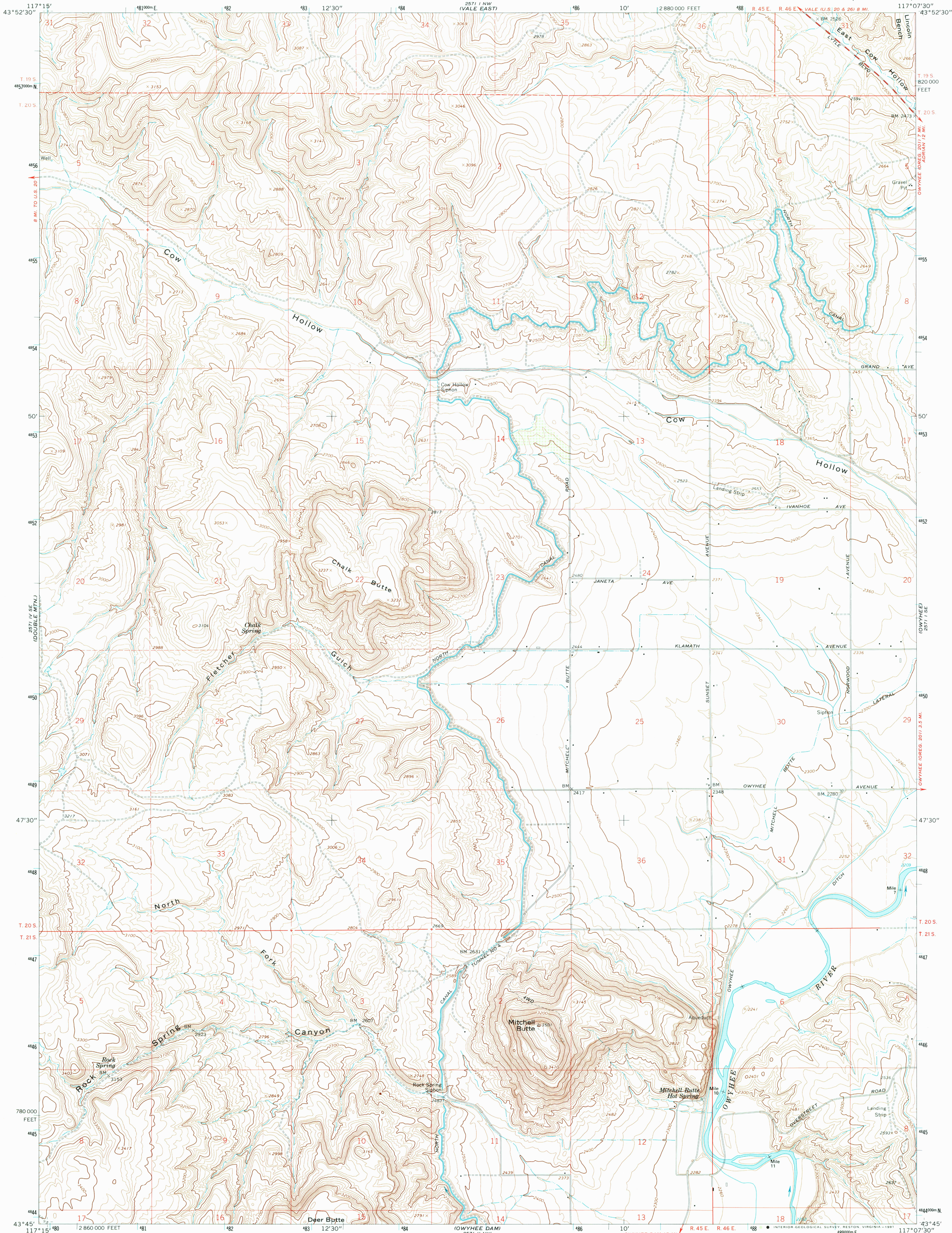


UNITED STATES
DEPARTMENT OF THE INTERIOR
GEOLOGICAL SURVEY

MITCHELL BUTTE QUADRANGLE
OREGON—MALHEUR CO.
7.5 MINUTE SERIES (TOPOGRAPHIC)



Mapped, edited, and published by the Geological Survey

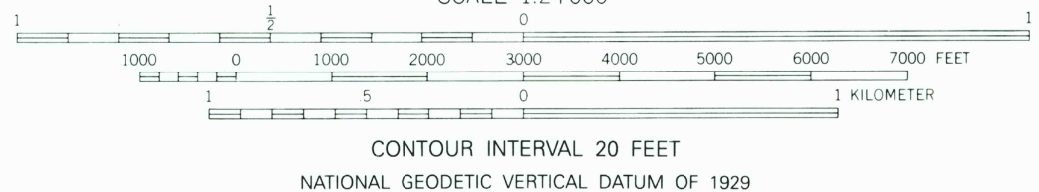
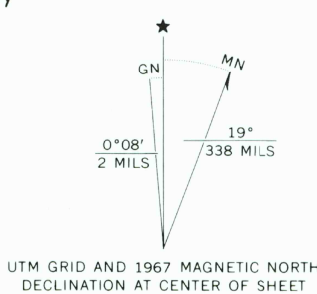
Control by USGS and NOS/NOAA

Topography by photogrammetric methods from aerial
photographs taken 1966-67. Field checked 1967.

Polyconic projection. 1927 North American Datum.
10,000-foot grid based on Oregon coordinate system,
south zone
1000-meter Universal Transverse Mercator grid ticks, zone 11,
shown in blue

The difference between 1927 North American Datum and North
American Datum of 1983 (NAD 83) for 7.5 minute intersections is
given in USGS Bulletin 1875. The NAD 83 is shown by dashed
corner ticks

Fine red dashed lines indicate selected fence lines



THIS MAP COMPLIES WITH NATIONAL MAP ACCURACY STANDARDS
FOR SALE BY U.S. GEOLOGICAL SURVEY
DENVER, COLORADO 80225, OR RESTON, VIRGINIA 22092
A FOLDER DESCRIBING TOPOGRAPHIC MAPS AND SYMBOLS IS AVAILABLE ON REQUEST



ROAD CLASSIFICATION
Medium-duty ——— Light-duty ———
Unimproved dirt - - - - -

MITCHELL BUTTE, OREG.
43117-G2-TF-024

Map photoinspected 1975
No major culture or drainage changes observed

1967
PHOTOINSPECTED 1975
DMA 2571 1 SW-SERIES V892

