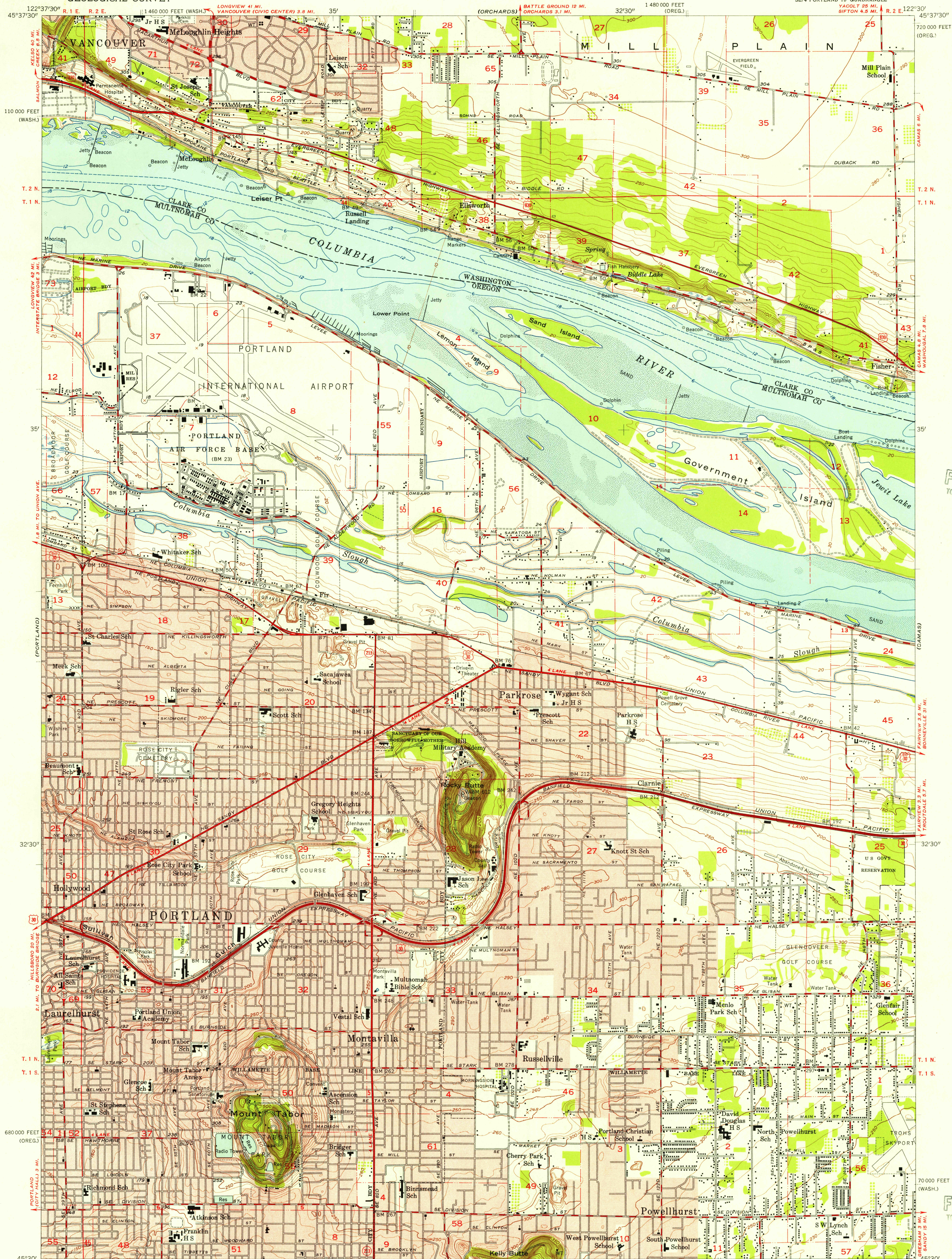


UNITED STATES
DEPARTMENT OF THE INTERIOR
GEOLOGICAL SURVEY

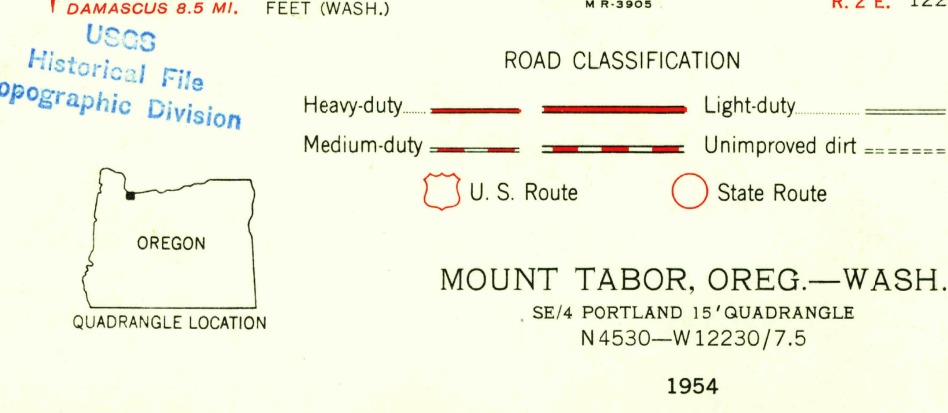
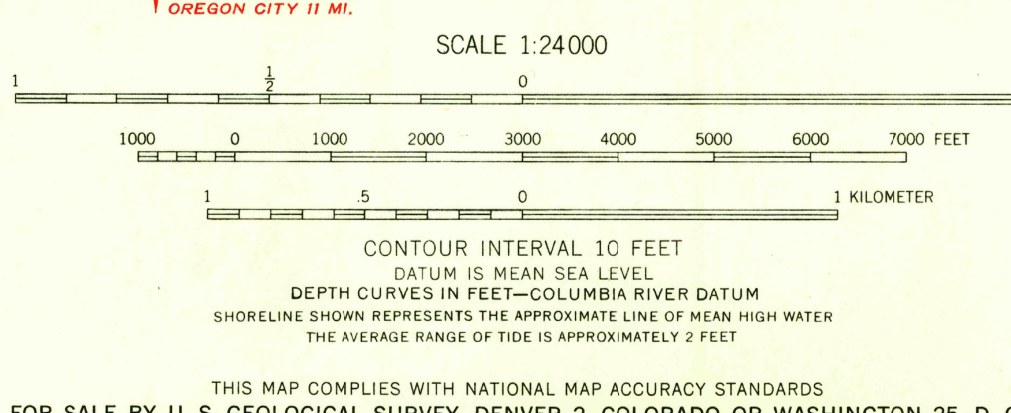
MOUNT TABOR QUADRANGLE
OREGON-WASHINGTON
7.5 MINUTE SERIES (TOPOGRAPHIC)
SE 1/4 PORTLAND 15' QUADRANGLE



U.S.G.S.
FILE COPY
TOPOGRAPHIC DIVISION

U.S.G.S.
FILE COPY
TOPOGRAPHIC DIVISION

Maped, edited, and published by the Geological Survey
Control by USGS, USC&GS, and State of Oregon
Topography from aerial photographs by photogrammetric methods
and by planimetric surveys. Culture and drainage in part by USC&GS
Aerial photographs taken 1951 and 1952. Field check 1954
Polyconic projection. 1927 North American datum
10,000-foot grid based on Oregon coordinate system, north zone
and Washington coordinate system, south zone
Hydrography compiled from USC&GS chart 6156 (1953)
Red tint indicates areas in which only
landmark buildings are shown
Dashed land lines indicate approximate locations



THIS MAP COMPLIES WITH NATIONAL MAP ACCURACY STANDARDS
FOR SALE BY U. S. GEOLOGICAL SURVEY, DENVER 2, COLORADO OR WASHINGTON 25, D. C.
A FOLDER DESCRIBING TOPOGRAPHIC MAPS AND SYMBOLS IS AVAILABLE ON REQUEST

1954

NOV 2 1955