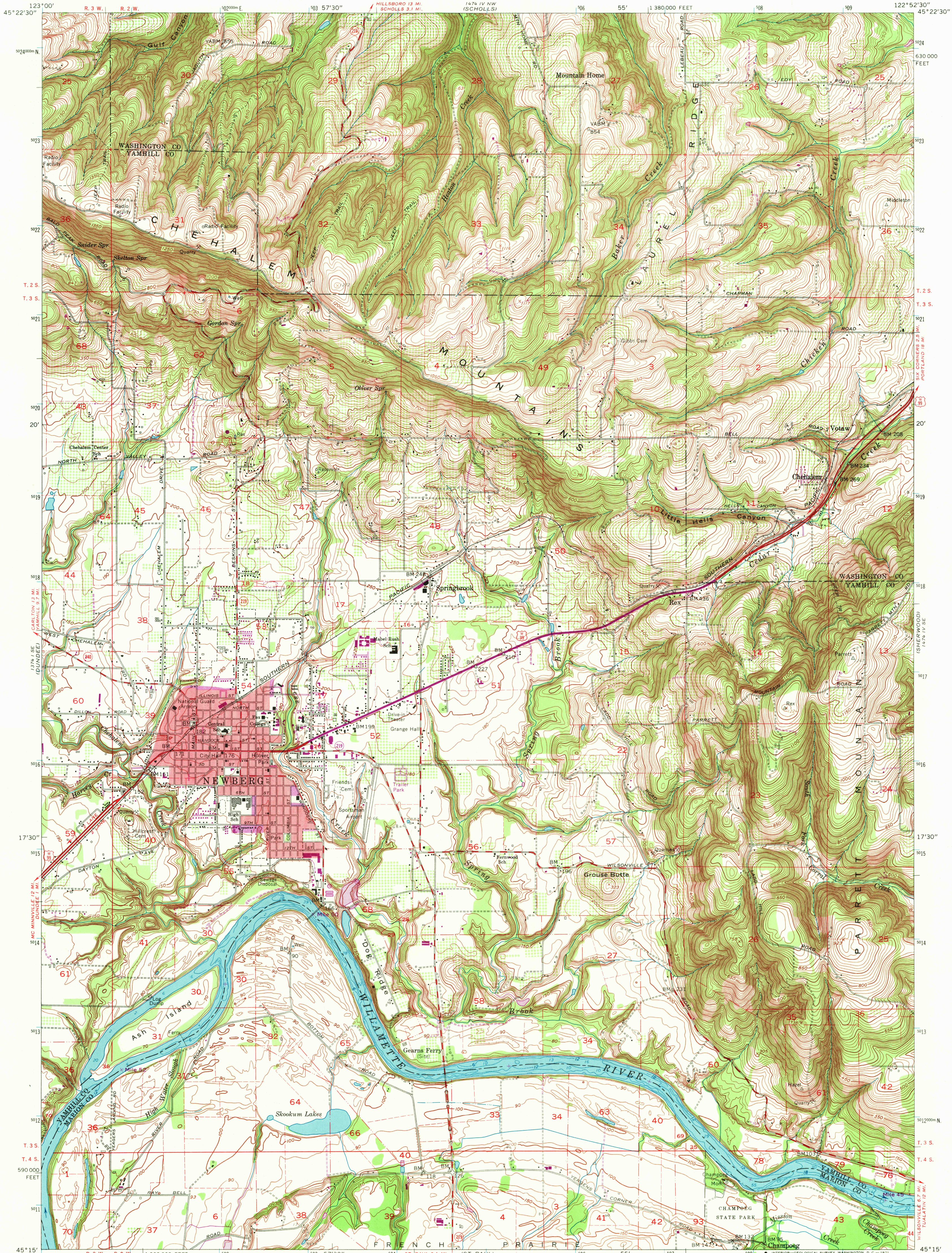


UNITED STATES  
DEPARTMENT OF THE INTERIOR  
GEOLOGICAL SURVEY

NEWBERG QUADRANGLE  
OREGON  
7.5 MINUTE SERIES (TOPOGRAPHIC)  
SW/4 BEAVERTON 15' QUADRANGLE



Mapped, edited, and published by the Geological Survey  
Control by USGS, USC&GS, USCE, and State of Oregon

Topography from aerial photographs by photogrammetric methods  
Aerial photographs taken 1952. Field check 1954

Revised from aerial photographs taken 1960. Field check 1961  
Selected hydrographic data compiled from USC&GS Chart 6172 (1958)

This information is intended for navigational purposes  
Polyconic projection. 1927 North American datum

10,000-foot grid based on Oregon coordinate system, north zone  
1000-meter Universal Transverse Mercator grid ticks,  
zone 10, shown in blue

Fine red dashed lines indicate selected fence lines  
Red tint indicates area in which only landmark buildings are shown

Revisions shown in purple compiled from aerial photographs  
taken 1970. This information not field checked

1 0 1000 2000 3000 4000 5000 6000 7000 FEET  
1 0 1 2 3 4 5 6 7 8 9 10 KILOMETER

CONTOUR INTERVAL 10 FEET  
DATUM IS MEAN SEA LEVEL  
DEPTH CURVES AND SOUNDINGS IN FEET—WILLAMETTE RIVER DATUM

THIS MAP COMPLIES WITH NATIONAL MAP ACCURACY STANDARDS  
FOR SALE BY U. S. GEOLOGICAL SURVEY, DENVER, COLORADO 80225, OR WASHINGTON, D. C. 20242  
A FOLDER DESCRIBING TOPOGRAPHIC MAPS AND SYMBOLS IS AVAILABLE ON REQUEST

ROAD CLASSIFICATION

Heavy-duty ——— Light-duty ———  
Medium-duty ——— Unimproved dirt ———

U.S. Route ——— State Route ———

OREGON  
QUADRANGLE LOCATION

NEWBERG, OREG.  
SW/4 BEAVERTON 15' QUADRANGLE  
N4515—W12252.5/7.5

1961  
PHOTOREVISED 1970  
AMS 1474 IV SW—SERIES V892

Purple tint indicates extension of urban areas

USGS  
HISTORICAL FILE  
TOPOGRAPHIC DIVISION

NOV 17 1971