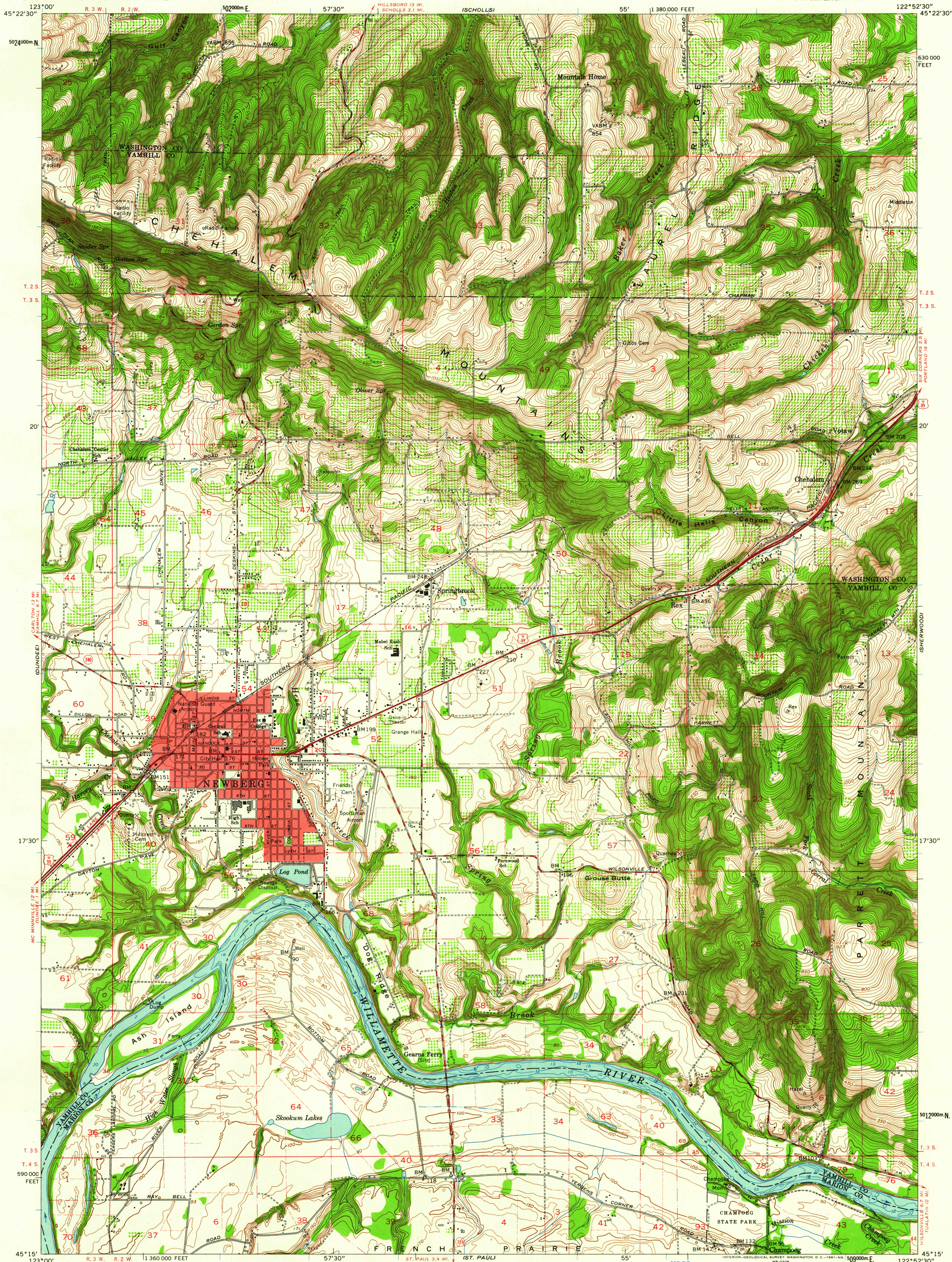
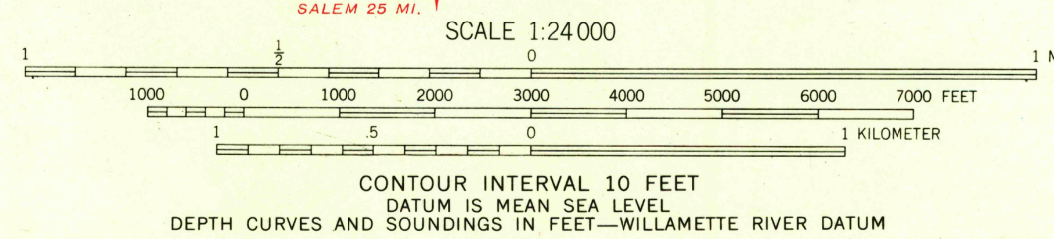


UNITED STATES  
DEPARTMENT OF THE INTERIOR  
GEOLOGICAL SURVEY

NEWBERG QUADRANGLE  
OREGON  
7.5 MINUTE SERIES (TOPOGRAPHIC)  
SW/4 BEAVERTON 15' QUADRANGLE



Mapped, edited, and published by the Geological Survey  
Control by USGS, USC&GS, USCE, and State of Oregon  
Topography from aerial photographs by photogrammetric methods  
Aerial photographs taken 1952. Field check 1954  
Revised from aerial photographs taken 1960. Field check 1961  
Selected hydrographic data compiled from USC&GS Chart 6172 (1958)  
This information is not intended for navigational purposes  
Polyconic projection. 1927 North American datum  
10,000-foot grid based on Oregon coordinate system, north zone  
1000-meter Universal Transverse Mercator grid ticks,  
zone 10, shown in blue  
Fine red dashed lines indicate selected fence lines  
Red tint indicates area in which only landmark buildings are shown



USGS  
Historical File  
Topographic Division

ROAD CLASSIFICATION  
Heavy-duty ——— Light-duty ———  
Medium-duty ——— Unimproved dirt ———  
U.S. Route ——— State Route ———



U.S.G.S. NEWBERG, OREG.  
FILE COPY  
TOPOGRAPHIC DIVISION  
3050  
NOV 15 1961