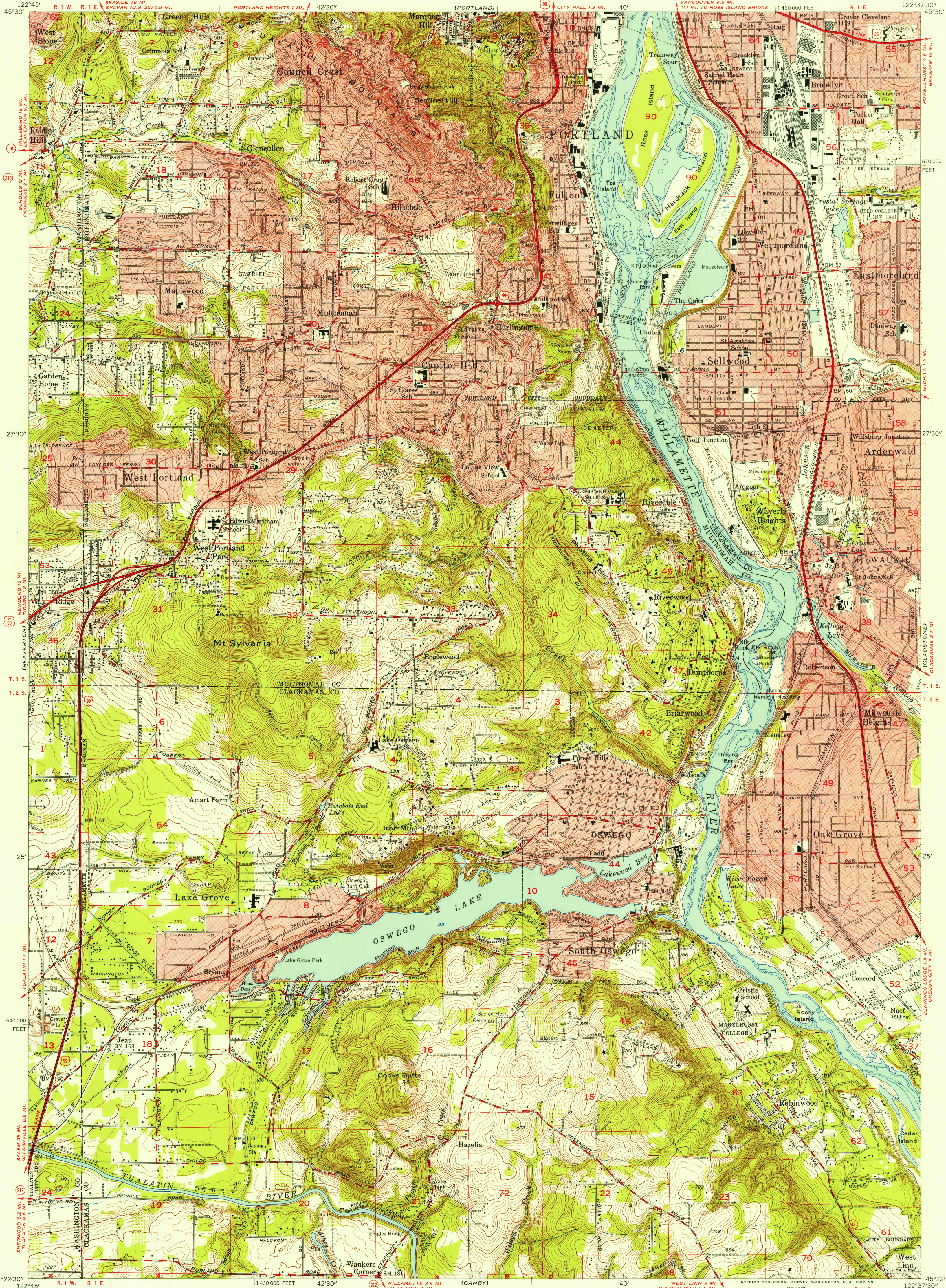


UNITED STATES
DEPARTMENT OF THE INTERIOR
GEOLOGICAL SURVEY

OSWEGO QUADRANGLE
OREGON
7.5 MINUTE SERIES (TOPOGRAPHIC)
NW/4 OREGON CITY 15' QUADRANGLE
1:50,000 FEET



Mapped, edited, and published by the Geological Survey
Control by USGS, USC&GS, USCE, and State of Oregon
Topography from aerial photographs by stereoplanigraph
Aerial photographs taken 1952. Field check 1954
Polyconic projection. 1927 North American datum
10,000-foot grid based on Oregon coordinate system, north zone
Hydrography from USC&GS charts 6555 (1953)
and 6171 (1952)
Red tint indicates areas in which only
landmark buildings are shown

TRUE NORTH
MAGNETIC NORTH
APPROXIMATE MEAN
DECLINATION, 1954

SCALE 1:24,000
1 0 1000 2000 3000 4000 5000 6000 7000 FEET
1 0 1 2 3 4 5 KILOMETER
CONTOUR INTERVAL 10 FEET
DATUM IS MEAN SEA LEVEL
DEPTH CURVES IN FEET—COLUMBIA RIVER DATUM
SHORELINE SHOWN REPRESENTS THE APPROXIMATE LINE OF MEAN HIGH WATER
THE AVERAGE RANGE OF TIDE IS APPROXIMATELY 2 FEET

USGS
Historical File
Topographic Division
OREGON
QUADRANGLE LOCATION

ROAD CLASSIFICATION
Heavy-duty ——— Light-duty ———
Medium-duty ——— Unimproved dirt ———
U.S. Route ——— State Route ———

OSWEGO, OREG.
NW/4 OREGON CITY 15' QUADRANGLE
N4522.6-W12237.5/7.5

1954

FEB 13 1957

4765