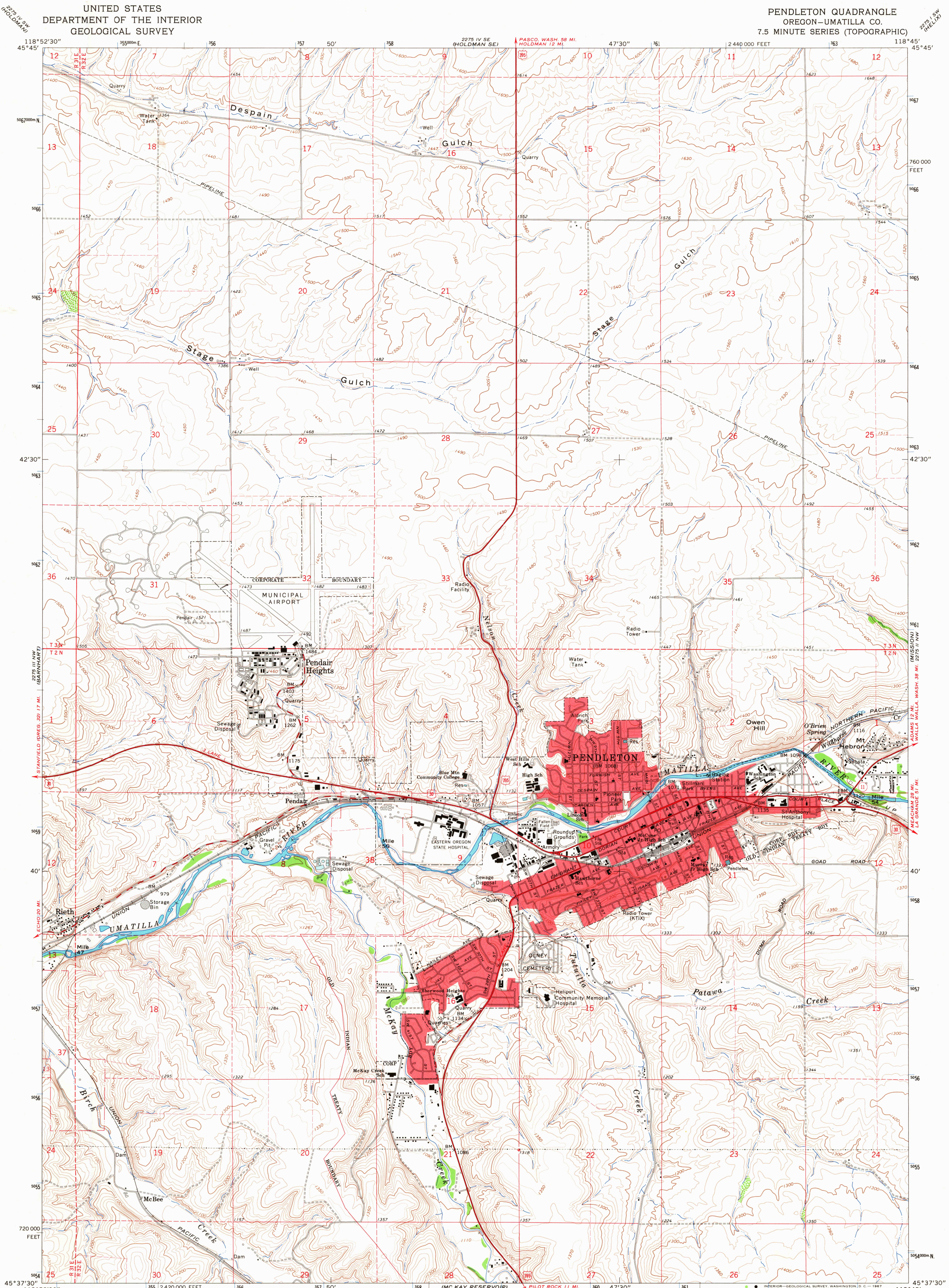
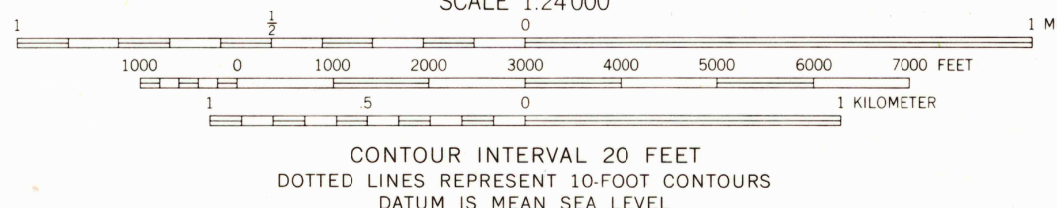
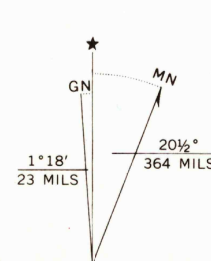


UNITED STATES  
DEPARTMENT OF THE INTERIOR  
GEOLOGICAL SURVEY

PENDLETON QUADRANGLE  
OREGON-UMATILLA CO.  
7.5 MINUTE SERIES (TOPOGRAPHIC)



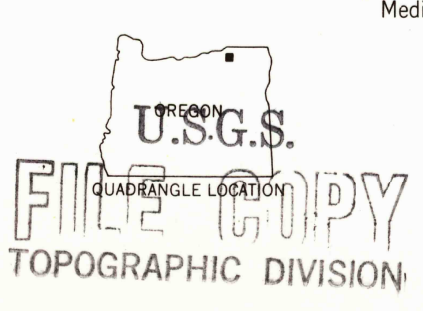
Mapped, edited, and published by the Geological Survey  
Control by USGS, USC&GS, and State of Oregon  
Topography by photogrammetric methods from aerial  
photographs taken 1964. Field checked 1966  
Polyconic projection. 1927 North American datum  
10,000-foot grid based on Oregon coordinate system,  
north zone  
1000-meter Universal Transverse Mercator grid ticks,  
zone 11, shown in blue  
Red tint indicates areas in which only landmark buildings  
are shown  
Fine red dashed lines indicate selected fence lines



USGS  
Historical Files  
Topographic Division

ROAD CLASSIFICATION

Heavy-duty	Light-duty
Medium-duty	Unimproved dirt
U.S. Route	State Route



PENDLETON, OREG.  
N4537.5-W11845/7.5  
1966  
AMS 2275 III NE-SERIES V892

3805