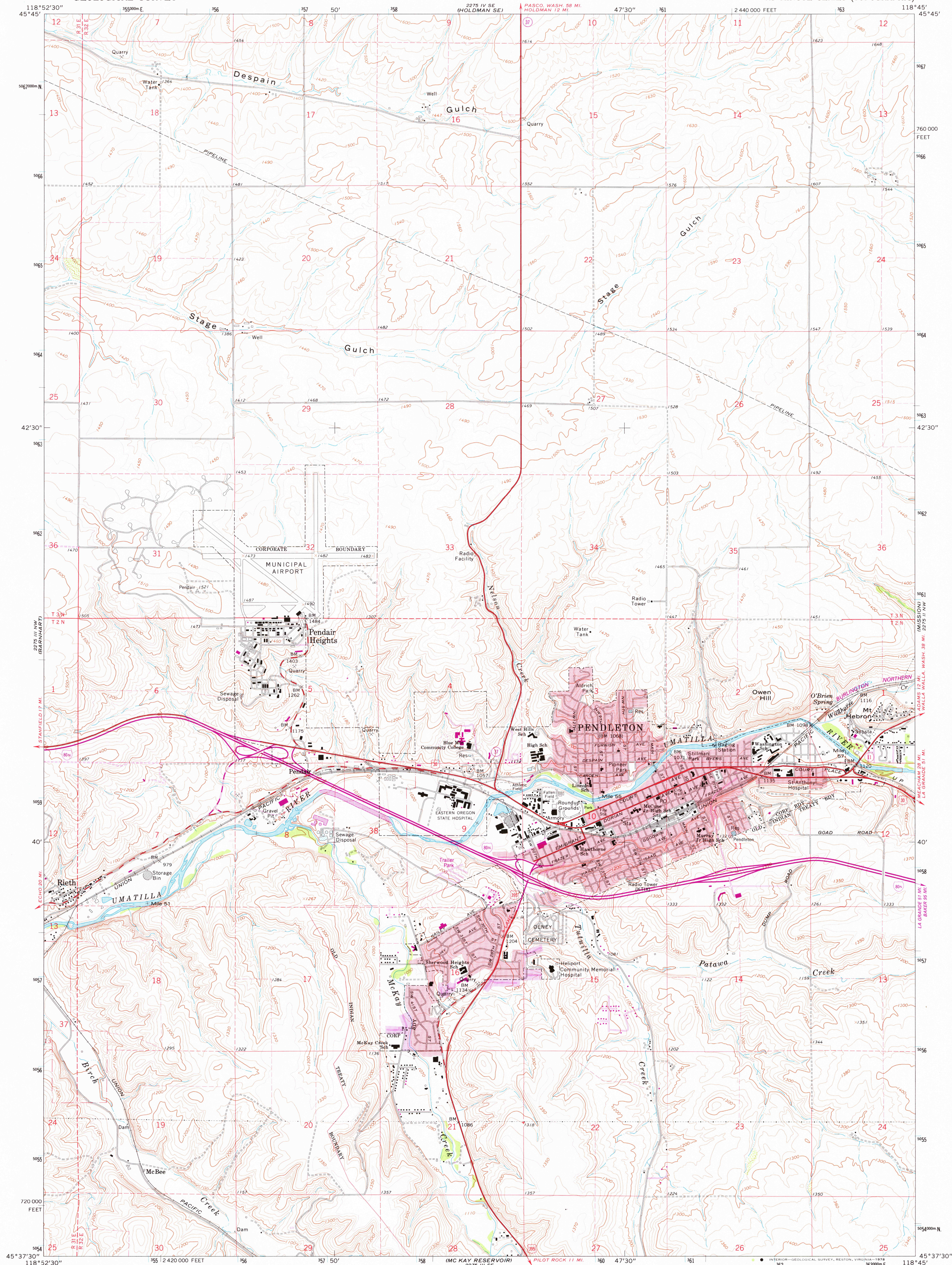


UNITED STATES
DEPARTMENT OF THE INTERIOR
GEOLOGICAL SURVEY

PENDLETON QUADRANGLE
OREGON-UMATILLA CO.
7.5 MINUTE SERIES (TOPOGRAPHIC)



Mapped, edited, and published by the Geological Survey

Control by USGS, NOS/NOAA, and State of Oregon

Topography by photogrammetric methods from aerial photographs taken 1964. Field checked 1966

Polyconic projection. 1927 North American datum

10,000-foot grid based on Oregon coordinate system, north zone

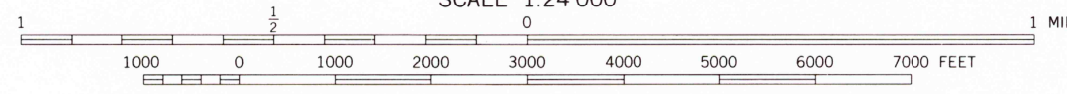
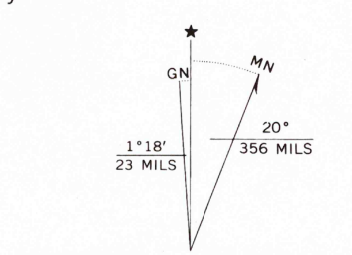
1000-meter Universal Transverse Mercator grid ticks, zone 11, shown in blue

Red tint indicates areas in which only landmark buildings are shown

Fine red dashed lines indicate selected fence lines

Revisions shown in purple compiled from aerial photographs taken 1976. This information is unchecked

Purple tint indicates extension of urban areas



CONTOUR INTERVAL 20 FEET
DOTTED LINES REPRESENT 10-FOOT CONTOURS
NATIONAL GEODETIC VERTICAL DATUM OF 1929

THIS MAP COMPLIES WITH NATIONAL MAP ACCURACY STANDARDS
FOR SALE BY U. S. GEOLOGICAL SURVEY, DENVER, COLORADO 80225, OR RESTON, VIRGINIA 22092
A FOLDER DESCRIBING TOPOGRAPHIC MAPS AND SYMBOLS IS AVAILABLE ON REQUEST



USGS
Historical File
Topographic Division

ROAD CLASSIFICATION	
Heavy-duty	Light-duty
Medium-duty	Unimproved dirt
U. S. Route	State Route
Interstate Route	

PENDLETON, OREG.
N4537.5—W11845.7.5

1966
PHOTOREVISED 1976
AMS 2275 III NE—SERIES V892

MAY 0 4 1978

3/50