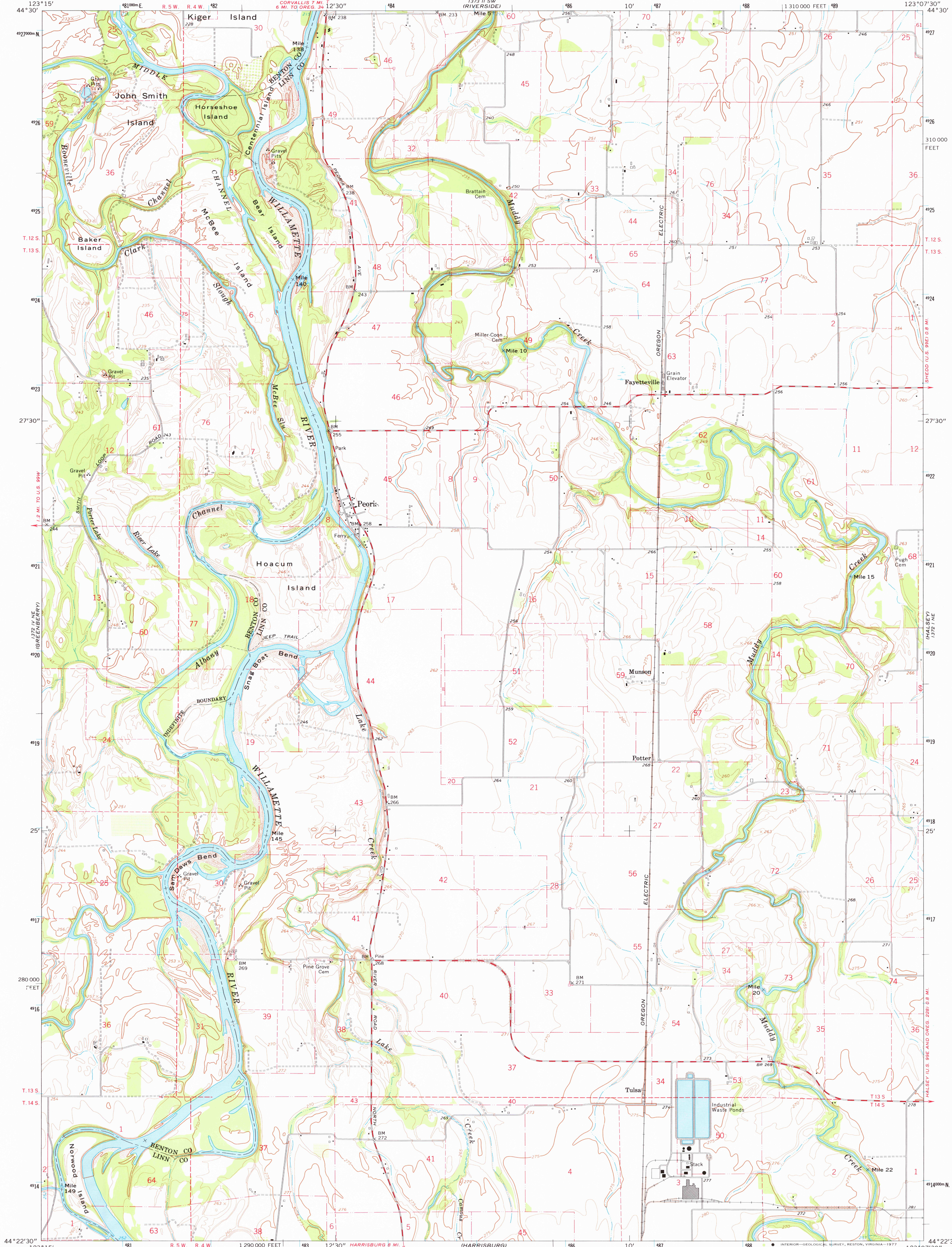


UNITED STATES
DEPARTMENT OF THE INTERIOR
GEOLOGICAL SURVEY

PEORIA QUADRANGLE
OREGON
7.5 MINUTE SERIES (TOPOGRAPHIC)
NW/4 HALSEY 15' QUADRANGLE



Mapped, edited, and published by the Geological Survey

Control by USGS, USC&GS, and State of Oregon

Topography by photogrammetric methods from aerial photographs taken 1967. Field checked 1969

Polyconic projection. 1927 North American datum

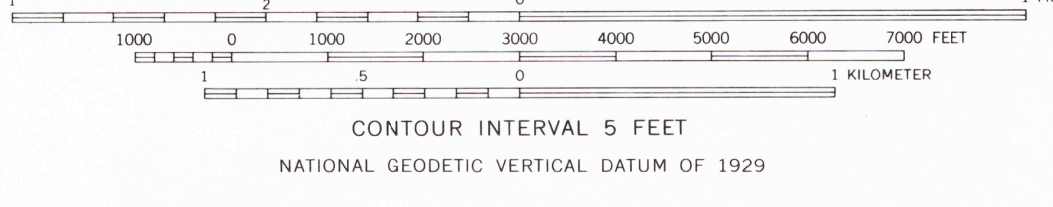
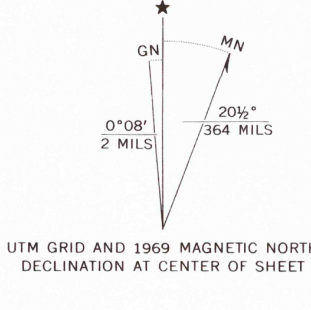
10,000-foot grid based on Oregon coordinate system, north zone

1000-meter Universal Transverse Mercator grid ticks, zone 10, shown in blue

Fine red dashed lines indicate selected fence lines

Map photoinspected 1975

No major culture or drainage changes observed



ROAD CLASSIFICATION
Secondary highway, all weather, Light-duty road, all weather, improved surface
Unimproved road, fair or dry weather

PEORIA, OREG.
NW/4 HALSEY 15' QUADRANGLE
N4422.5—W12307.5/7.5

USGS
Historical File
Topographic Division

1969
PHOTOINSPECTED 1975
AMS 1372 I NW—SERIES V892

THIS MAP COMPLIES WITH NATIONAL MAP ACCURACY STANDARDS
FOR SALE BY U. S. GEOLOGICAL SURVEY, DENVER, COLORADO 80225, OR RESTON, VIRGINIA 22092
A FOLDER DESCRIBING TOPOGRAPHIC MAPS AND SYMBOLS IS AVAILABLE ON REQUEST

APR 12 1977
4400