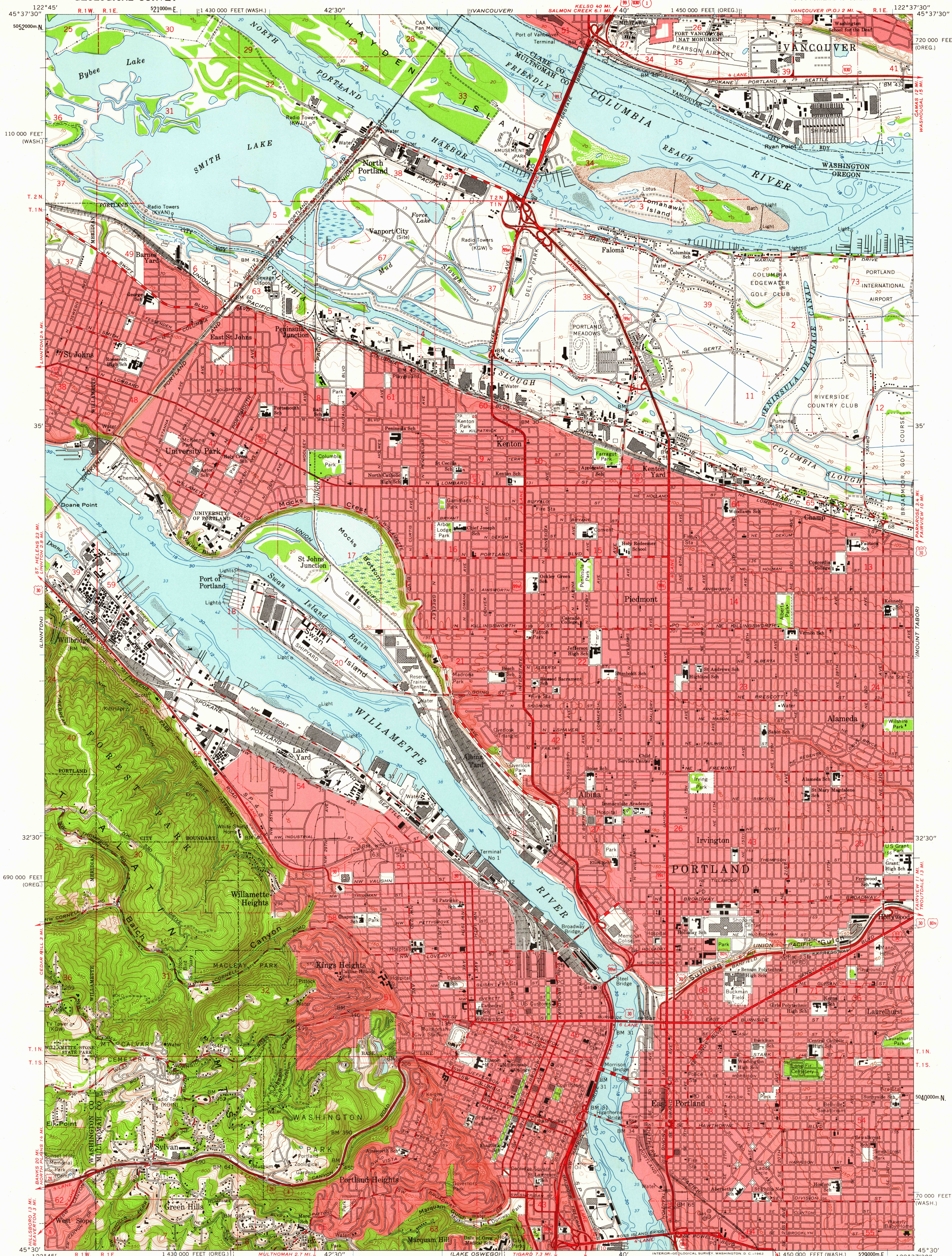
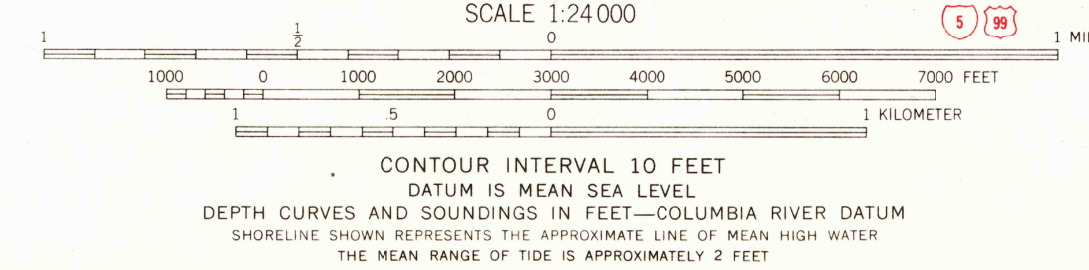
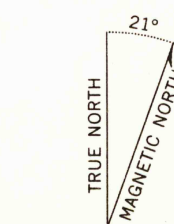


UNITED STATES
DEPARTMENT OF THE INTERIOR
GEOLOGICAL SURVEY

PORTLAND QUADRANGLE
OREGON-WASHINGTON
7.5 MINUTE SERIES (TOPOGRAPHIC)



Mapped, edited, and published by the Geological Survey
Control by USGS, USC&GS, and State of Oregon
Topography from aerial photographs by photogrammetric methods
and by planimetric surveys. Culture and drainage in part by USC&GS
Aerial photographs taken 1951. Field checked 1954
Revised from aerial photographs taken 1960. Field checked 1961
Selected hydrographic data compiled from USC&GS Charts 6155 (1960) and
6156 (1959). This information is not intended for navigational purposes
Polyconic projection. 1927 North American datum
10,000-foot grids based on Oregon coordinate system, north zone
and Washington coordinate system, south zone
1000-meter Universal Transverse Mercator grid ticks,
zone 10, shown in blue
Red tint indicates areas in which only landmark buildings are shown
Dashed land lines indicate approximate locations



THIS MAP COMPLIES WITH NATIONAL MAP ACCURACY STANDARDS
FOR SALE BY U.S. GEOLOGICAL SURVEY, DENVER 25, COLORADO OR WASHINGTON 25, D. C.
A FOLDER DESCRIBING TOPOGRAPHIC MAPS AND SYMBOLS IS AVAILABLE ON REQUEST

USGS
Historical File
Topographic Division



ROAD CLASSIFICATION
Heavy-duty ——— Light-duty ———
Medium-duty ——— Unimproved dirt ———
Interstate Route U.S. Route State Route

PORTLAND, OREG.—WASH.
SW/4 PORTLAND 15' QUADRANGLE
N4530—W12237.5/7.5

1961

U.S.G.S.
FILE COPY
TOPOGRAPHIC DIVISION