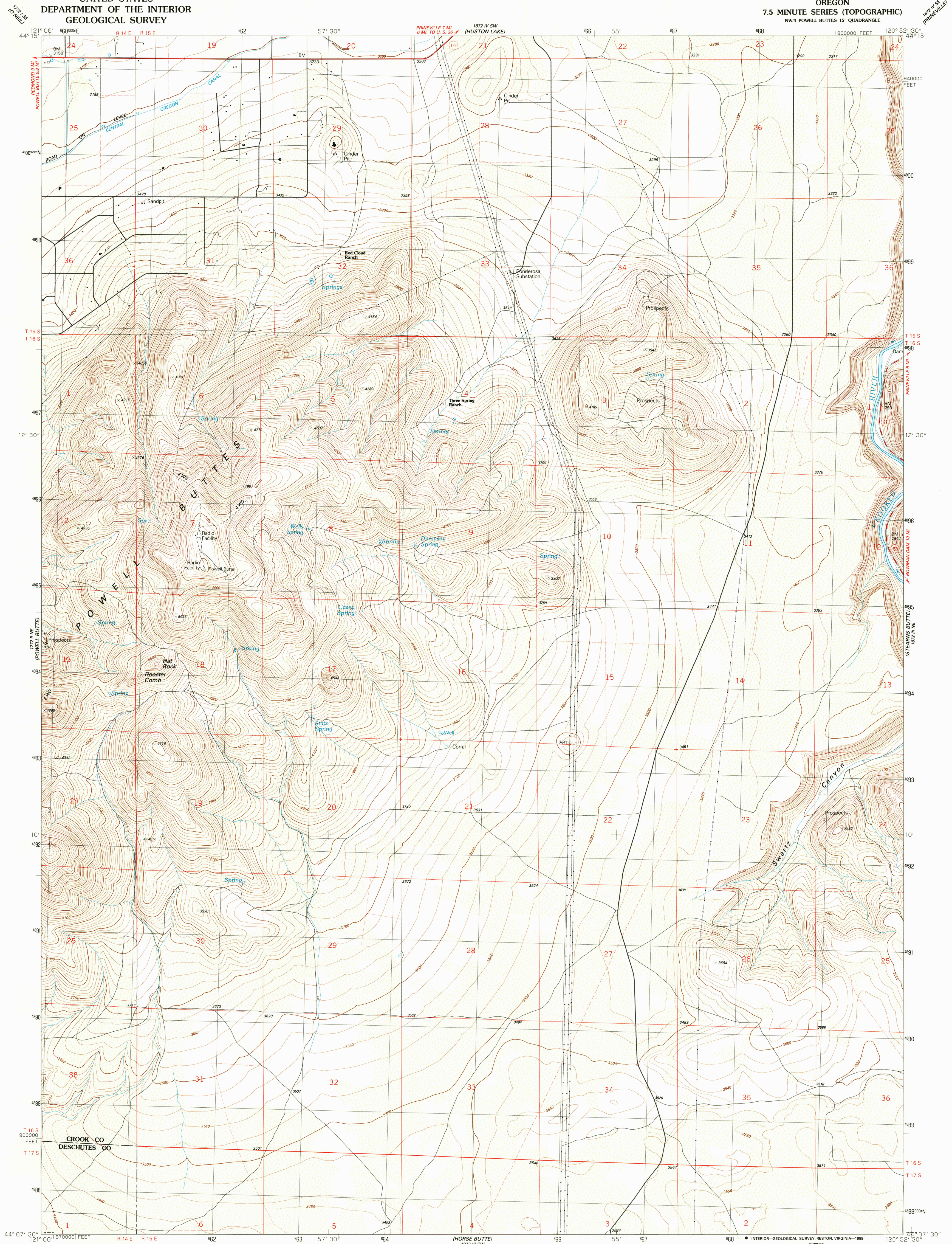


UNITED STATES
DEPARTMENT OF THE INTERIOR
GEOLOGICAL SURVEY

POWELL BUTTES QUADRANGLE
OREGON
7.5 MINUTE SERIES (TOPOGRAPHIC)
NW/4 POWELL BUTTES 15' QUADRANGLE



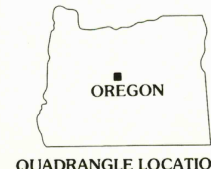
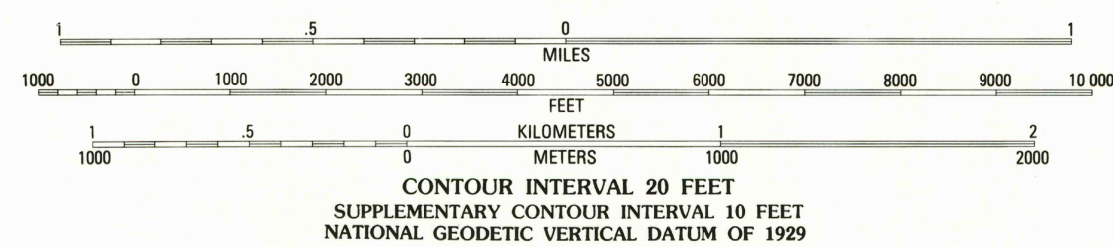
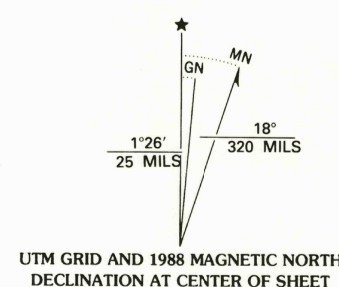
Produced by the United States Geological Survey
Control by USGS and NOS/NOAA

Topography by photogrammetric methods from aerial photographs
taken 1957. Revised from aerial photographs taken 1985
Field checked 1986. Map edited 1988

Projection and 10,000-foot grid ticks: Oregon coordinate
system, south zone (Lambert conformal conic)
1000-meter Universal Transverse Mercator grid, zone 10
1927 North American Datum

To place on the predicted North American Datum 1983,
move the projection lines 20 meters north and
91 meters east as shown by dashed corner ticks

Fine red dashed lines indicate selected fence and field lines where
generally visible on aerial photographs. This information is unchecked



ROAD CLASSIFICATION
Primary highway, hard surface improved surface
Secondary highway, hard surface Unimproved road
Interstate Route U. S. Route State Route

POWELL BUTTES, OREG.
NW/4 POWELL BUTTES 15' QUADRANGLE
44120-B8-TF-024

1988

DMA 1872 III NW-SERIES V892

THIS MAP COMPLIES WITH NATIONAL MAP ACCURACY STANDARDS
FOR SALE BY U. S. GEOLOGICAL SURVEY, DENVER, COLORADO 80225, OR RESTON, VIRGINIA 22092
A FOLDER DESCRIBING TOPOGRAPHIC MAPS AND SYMBOLS IS AVAILABLE ON REQUEST

USGS NMD HISTORICAL MAP

MAR 10 1989

REC'D FILE COPY