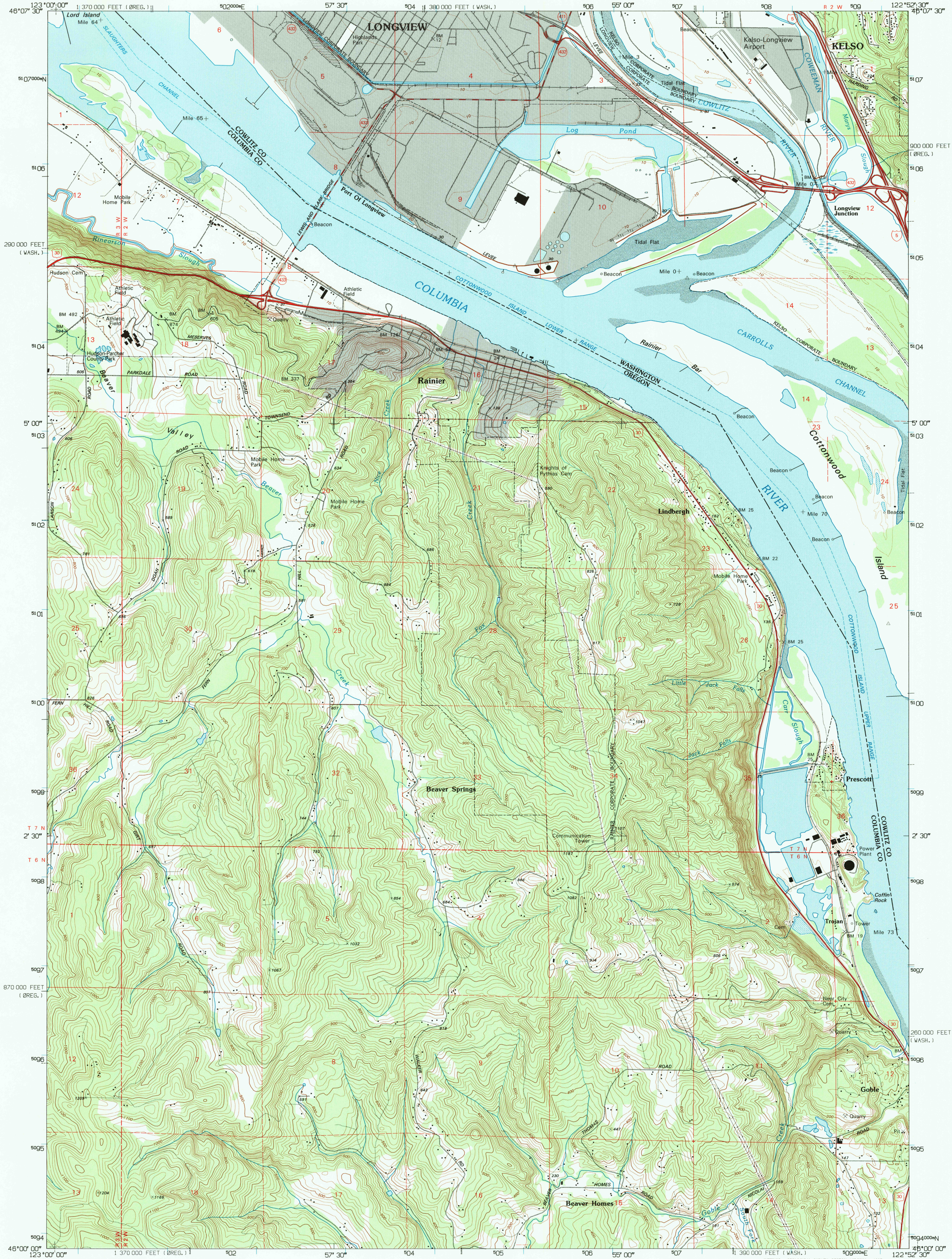


UNITED STATES
DEPARTMENT OF THE INTERIOR
GEOLOGICAL SURVEY

RAINIER QUADRANGLE
OREGON-WASHINGTON
7.5-MINUTE SERIES (TOPOGRAPHIC)



Produced by the United States Geological Survey
Control by USGS, NOS/NOAA and USCE
Compiled from imagery dated 1951. Revised from imagery
dated 1990. PLSS and survey control current as of
1954. Map edited 1995. Contours and land elevations
have not been revised and may conflict with other content
North American Datum of 1927 (NAD 27). Projection and
blue 1000-meter ticks: Universal Transverse Mercator, zone 10
10 000-foot ticks: Oregon Coordinate System, north zone and
Washington Coordinate System, south zone.
North American Datum of 1983 (NAD 83) is shown by dashed
corner ticks. The values of the shift between NAD 27
and NAD 83 for 7.5-minute intersections are obtainable from
National Geodetic Survey NADCON software

SCALE 1:24 000
1 000 0 1000 2000 3000 4000 5000 6000 7000 8000 9000 10000
KILOMETERS
METERS
MILES
FOOT
CONTOUR INTERVAL 20 FEET
SUPPLEMENTARY CONTOUR INTERVAL 10 FEET
NATIONAL GEODETIC VERTICAL DATUM OF 1929
SHORELINE SHOWN REPRESENTS THE APPROXIMATE LINE OF MEAN HIGH WATER
THE AVERAGE RANGE OF TIDE IS APPROXIMATELY 5 FEET
TO CONVERT FEET TO METERS MULTIPLY BY 0.3048
TO CONVERT METERS TO FEET MULTIPLY BY 3.2808
THIS MAP COMPLIES WITH NATIONAL MAP ACCURACY STANDARDS
FOR SALE BY U.S. GEOLOGICAL SURVEY
DENVER, COLORADO 80225, OR RESTON, VIRGINIA 22092
A FOLDER DESCRIBING TOPOGRAPHIC MAPS AND SYMBOLS IS AVAILABLE ON REQUEST

ROAD CLASSIFICATION
Primary highway
hard surface
Secondary highway
hard surface
Unimproved road
Interstate Route
U.S. Route
State Route
QUADRANGLE LOCATION
RAINIER, OR-WA
46122-A8-TF-024
1990
DMA 1476 III SW-SERIES V892

USGS AND HISTORICAL
MAP ARCHIVES
JUN 15 1995
REC'D FILE COPY