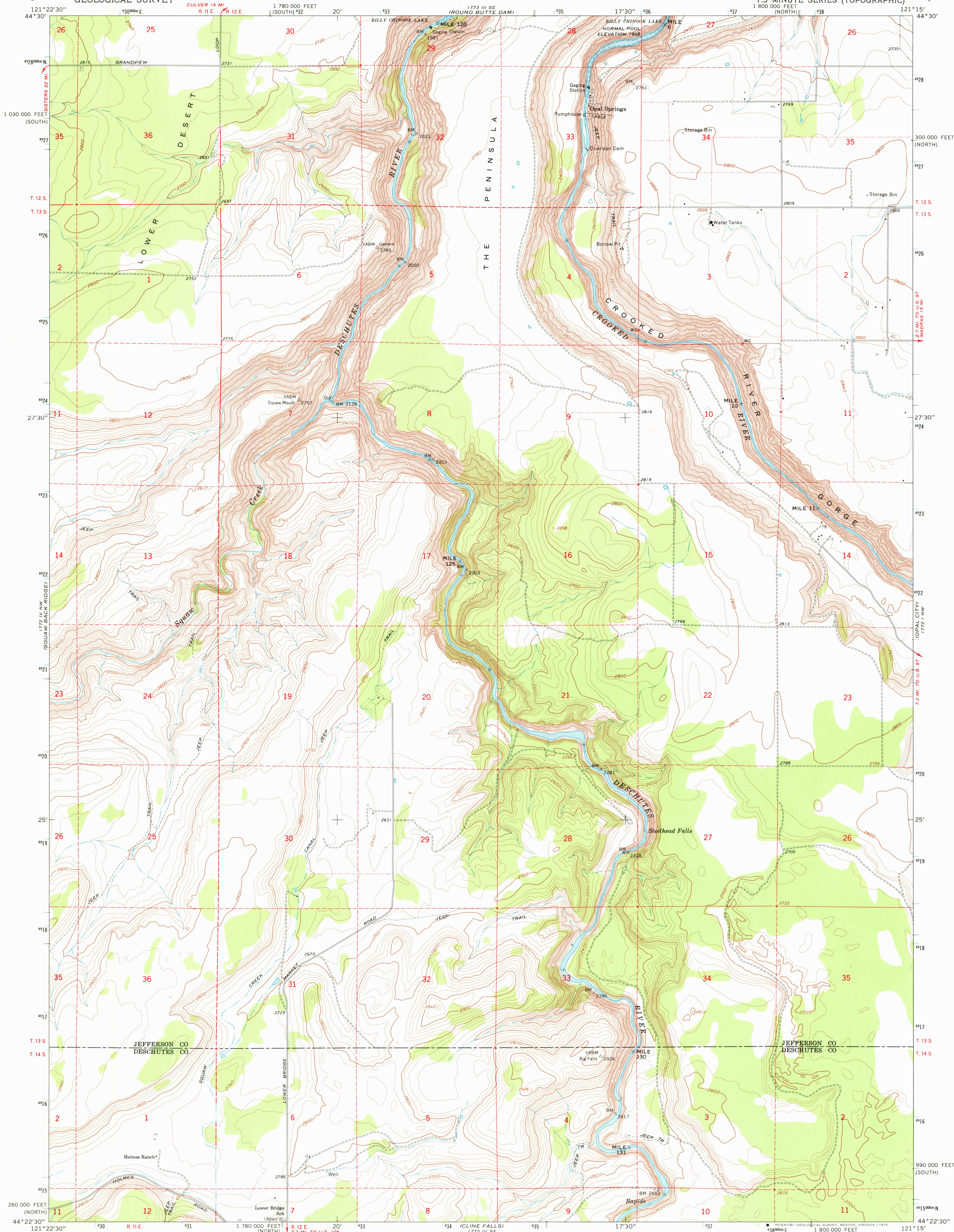


UNITED STATES
DEPARTMENT OF THE INTERIOR
GEOLOGICAL SURVEY

STEELHEAD FALLS QUADRANGLE
OREGON
7.5 MINUTE SERIES (TOPOGRAPHIC)



Mapped, edited, and published by the Geological Survey

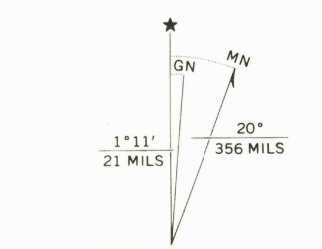
Control by USGS and USC&GS

Topography by photogrammetric methods from aerial photographs taken 1957. Field checked 1962

Polycyclic projection, 1927 North American datum 10,000-foot grids based on Oregon coordinate system, north and south zones

1000-metre Universal Transverse Mercator grid ticks, zone 10, shown in blue

Fine red dashed lines indicate selected fence lines



SCALE 1:24,000

CONTOUR INTERVAL 20 FEET
NATIONAL GEODETIC VERTICAL DATUM OF 1929

ROAD CLASSIFICATION

Light duty ————— Unimproved dirt —————



STEELHEAD FALLS, OREG.
N4422.5-W12115/7.5

USGS
Historical File
Topographic Division

1962
AMS 1772 IV NE-SERIES V892

JUN 16 1976