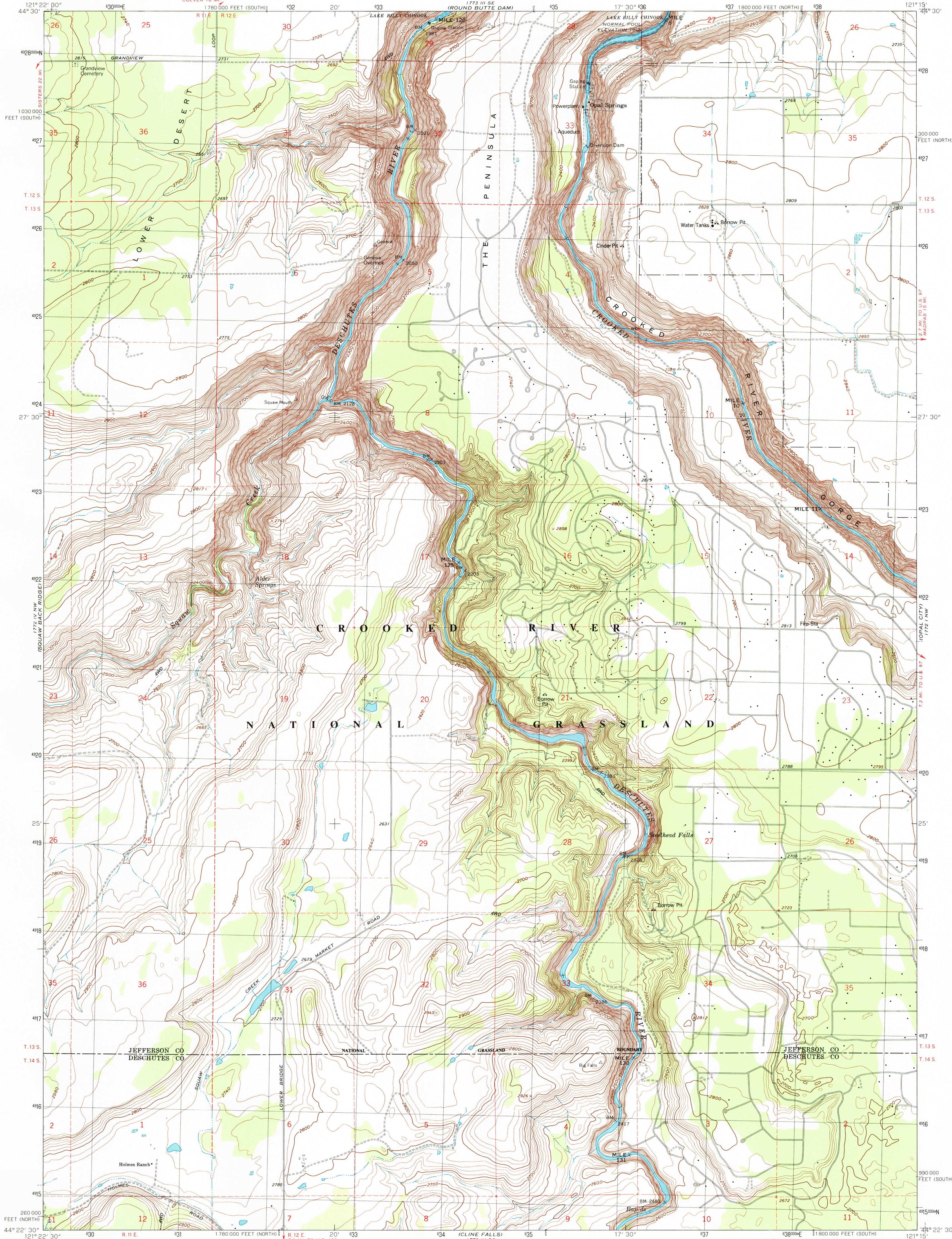
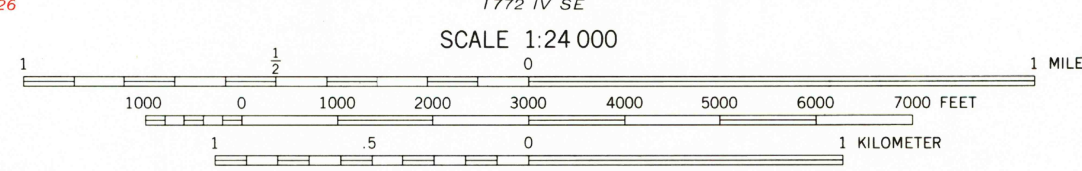
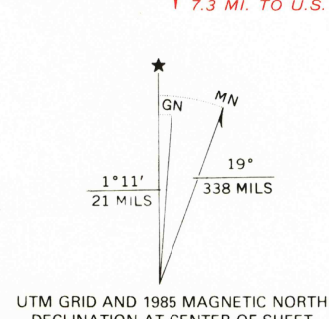


UNITED STATES
DEPARTMENT OF THE INTERIOR
GEOLOGICAL SURVEY

STEELHEAD FALLS QUADRANGLE
OREGON
7.5 MINUTE SERIES (TOPOGRAPHIC)



Mapped, edited, and published by the Geological Survey
Revised in cooperation with U.S. Forest Service
Control by USGS and NOS/NOAA
Topography by photogrammetric methods from aerial
photographs taken 1957. Field checked 1962
Revised from aerial photographs taken 1982. Limited
field check 1985. Map edited 1985.
Projection and 10,000-foot grid ticks: Oregon coordinate
system, north zone and south zone (Lambert conformal conic)
1000-meter Universal Transverse Mercator grid, zone 10
1927 North American datum. To place on the predicted
North American Datum 1983 move the projection lines 21
meters north and 92 meters east as shown by dashed corner ticks
There may be private inholdings within the boundaries of
the National or State reservations shown on this map



ROAD CLASSIFICATION
Light-duty ————— Unimproved dirt —————

STEELHEAD FALLS, OREG.
44121-D3-TF-024

1985
DMA 1772 IV NE—SERIES V892

