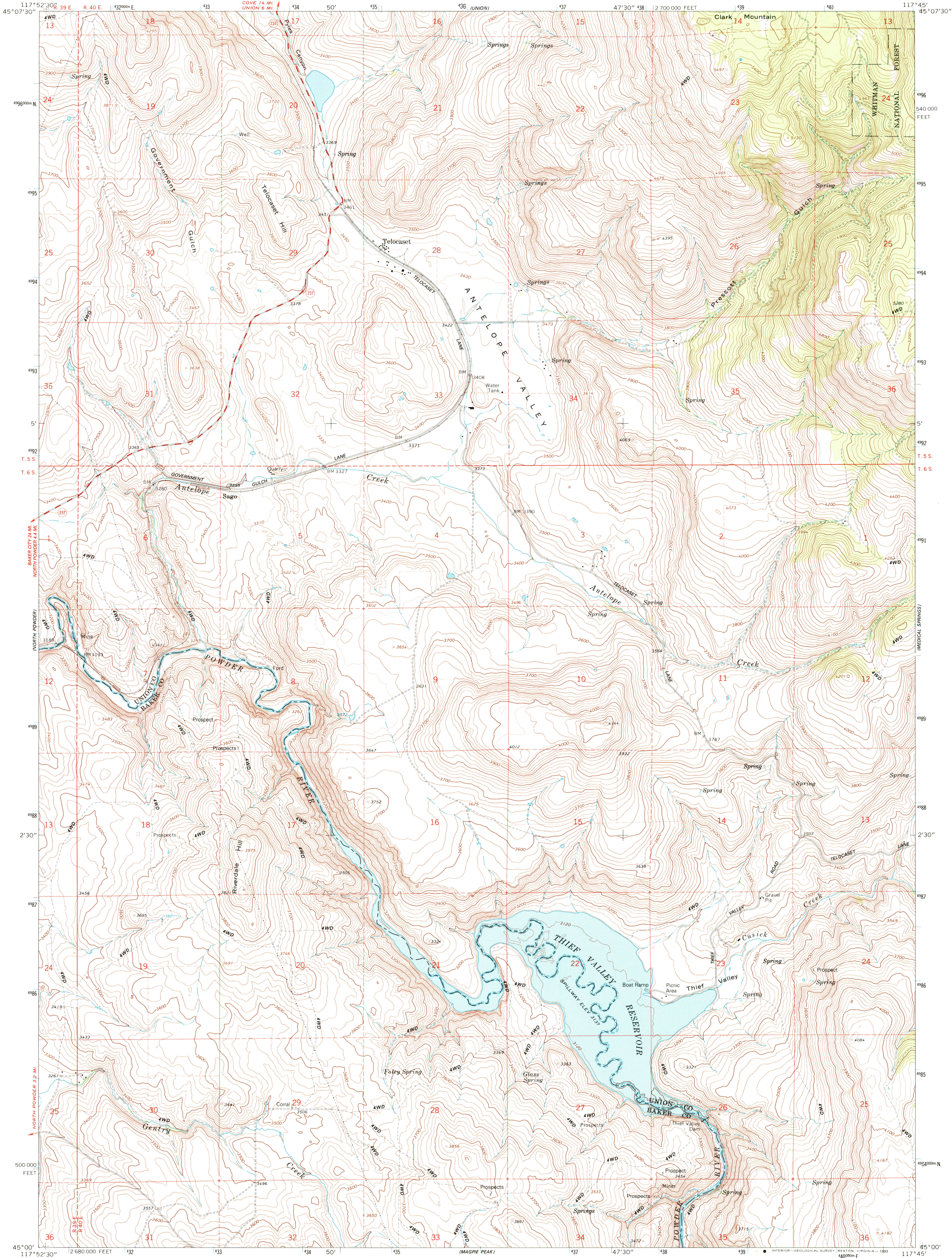


UNITED STATES
DEPARTMENT OF THE INTERIOR
GEOLOGICAL SURVEY

TELOCASET QUADRANGLE
OREGON
7.5 MINUTE SERIES (TOPOGRAPHIC)



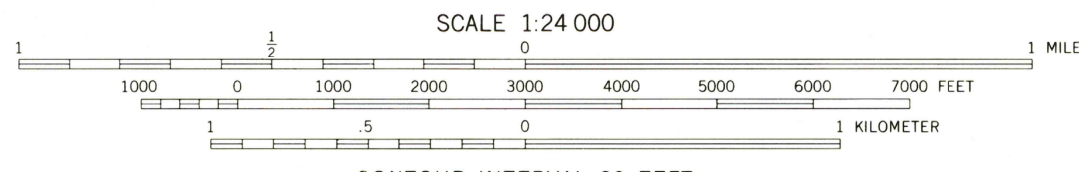
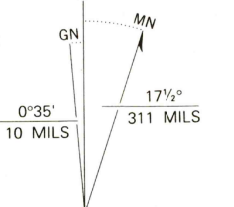
Produced by the United States Geological Survey
Control by USGS and NOS/NOAA

Compiled from aerial photographs taken 1963. Revised from aerial
photographs taken 1988 and 1990. Field checked 1992. Map edited 1993

North American Datum of 1927 (NAD 27). Projection and
10000-foot grid ticks: Oregon Coordinate System, north zone
(Lambert Conformal Conic). 1000-meter Universal Transverse
Mercator grid ticks, zone 11, shown in blue

The difference between NAD 27 and North American Datum of
1983 (NAD 83) for 7.5 minute intersections is given in USGS
Bulletin 1875. The NAD 83 is shown by dashed corner ticks

There may be private inholdings within the boundaries of the
National or State reservations shown on this map



CONTOUR INTERVAL 20 FEET
DOTTED LINES REPRESENT 10-FOOT CONTOURS
NATIONAL GEODETIC VERTICAL DATUM OF 1929

THIS MAP COMPLIES WITH NATIONAL MAP ACCURACY STANDARDS
FOR SALE BY U. S. GEOLOGICAL SURVEY, DENVER, COLORADO 80225, OR RESTON, VIRGINIA 22092
A FOLDER DESCRIBING TOPOGRAPHIC MAPS AND SYMBOLS IS AVAILABLE ON REQUEST



ROAD CLASSIFICATION
Medium-duty ——— Light-duty ———
Unimproved dirt ———
○ State Route

TELOCASET, OREG.
45117-A7-TF-024

1993

DMA 2474 III SE-SERIES V892

