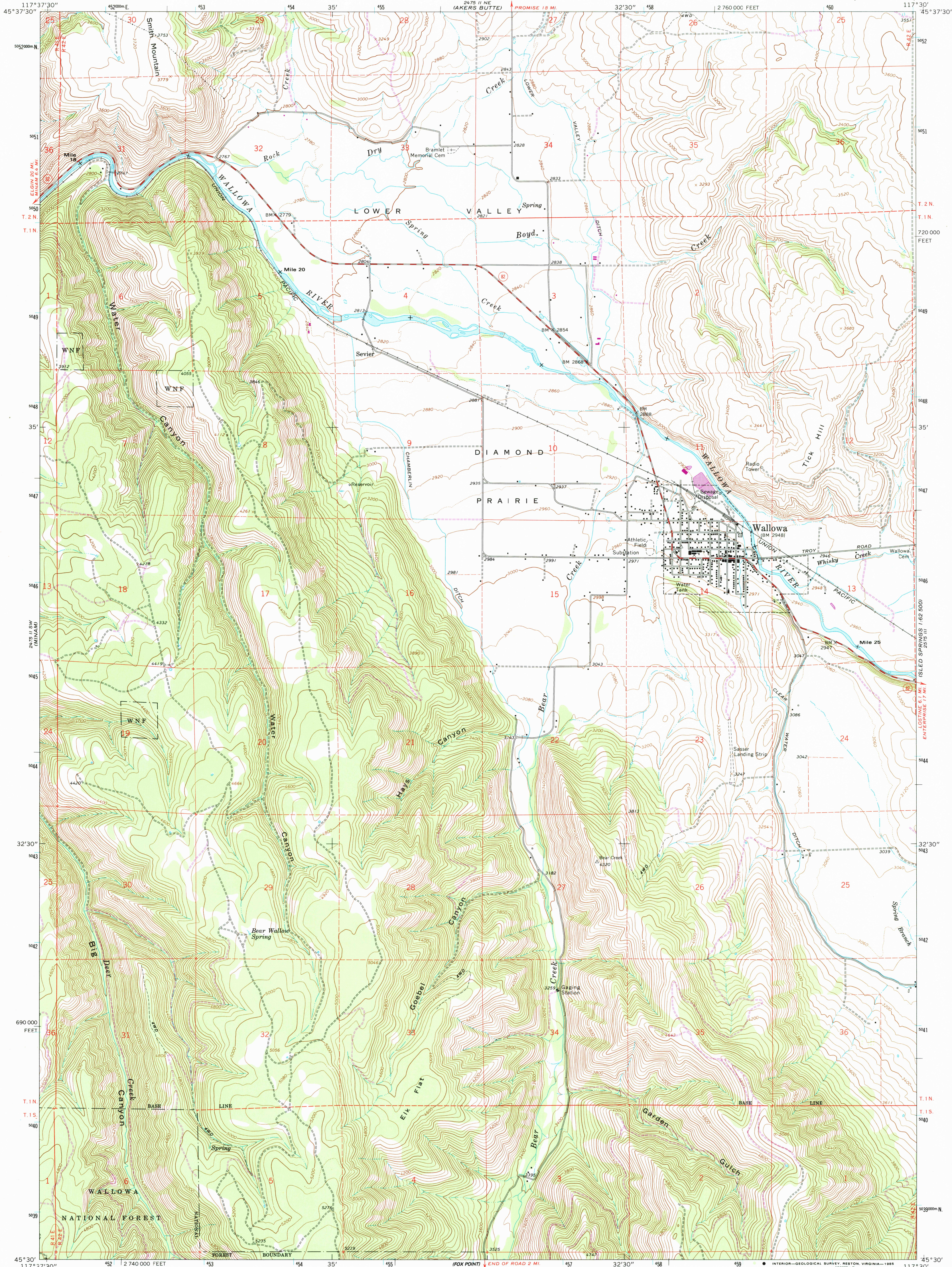


UNITED STATES  
DEPARTMENT OF THE INTERIOR  
GEOLOGICAL SURVEY

WALLOWA QUADRANGLE  
OREGON—WALLOWA CO.  
7.5 MINUTE SERIES (TOPOGRAPHIC)



Mapped, edited, and published by the Geological Survey

Control by USGS and NOS/NOAA

Topography by photogrammetric methods from aerial photographs taken 1959. Field checked 1964

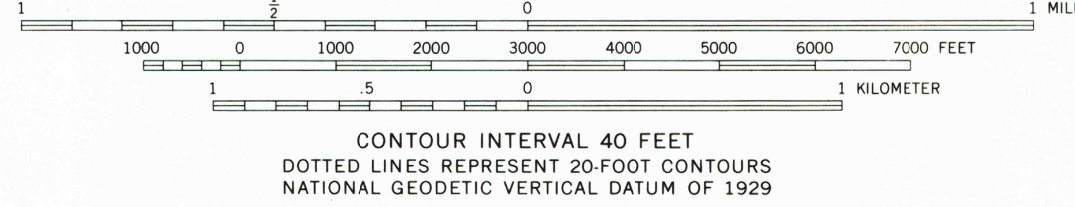
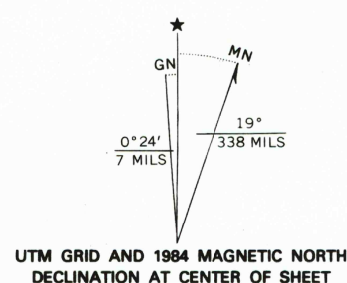
Polyconic projection. 1927 North American datum 10,000-foot grid based on Oregon coordinate system, north zone

1000-meter Universal Transverse Mercator grid ticks, zone 11, shown in blue

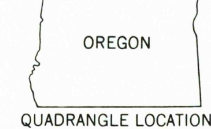
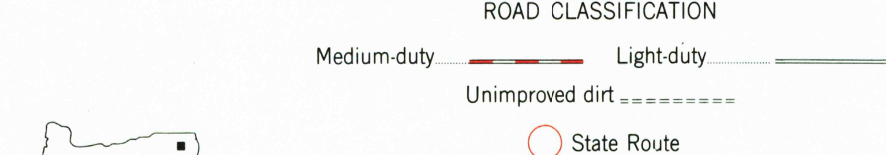
To place on the predicted North American Datum 1983 move the projection lines 17 meters north and 80 meters east as shown by dashed corner ticks

Fine red dashed lines indicate selected fence lines

There may be private inholdings within the boundaries of the National or State reservations shown on this map



THIS MAP COMPLIES WITH NATIONAL MAP ACCURACY STANDARDS  
FOR SALE BY U. S. GEOLOGICAL SURVEY, DENVER, COLORADO 80225, OR RESTON, VIRGINIA 22092  
A FOLDER DESCRIBING TOPOGRAPHIC MAPS AND SYMBOLS IS AVAILABLE ON REQUEST



WALLOWA, OREG.

45117-E5-TF-024

1964

PHOTOREVISED 1984  
DMA 2475 II SE - SERIES V892