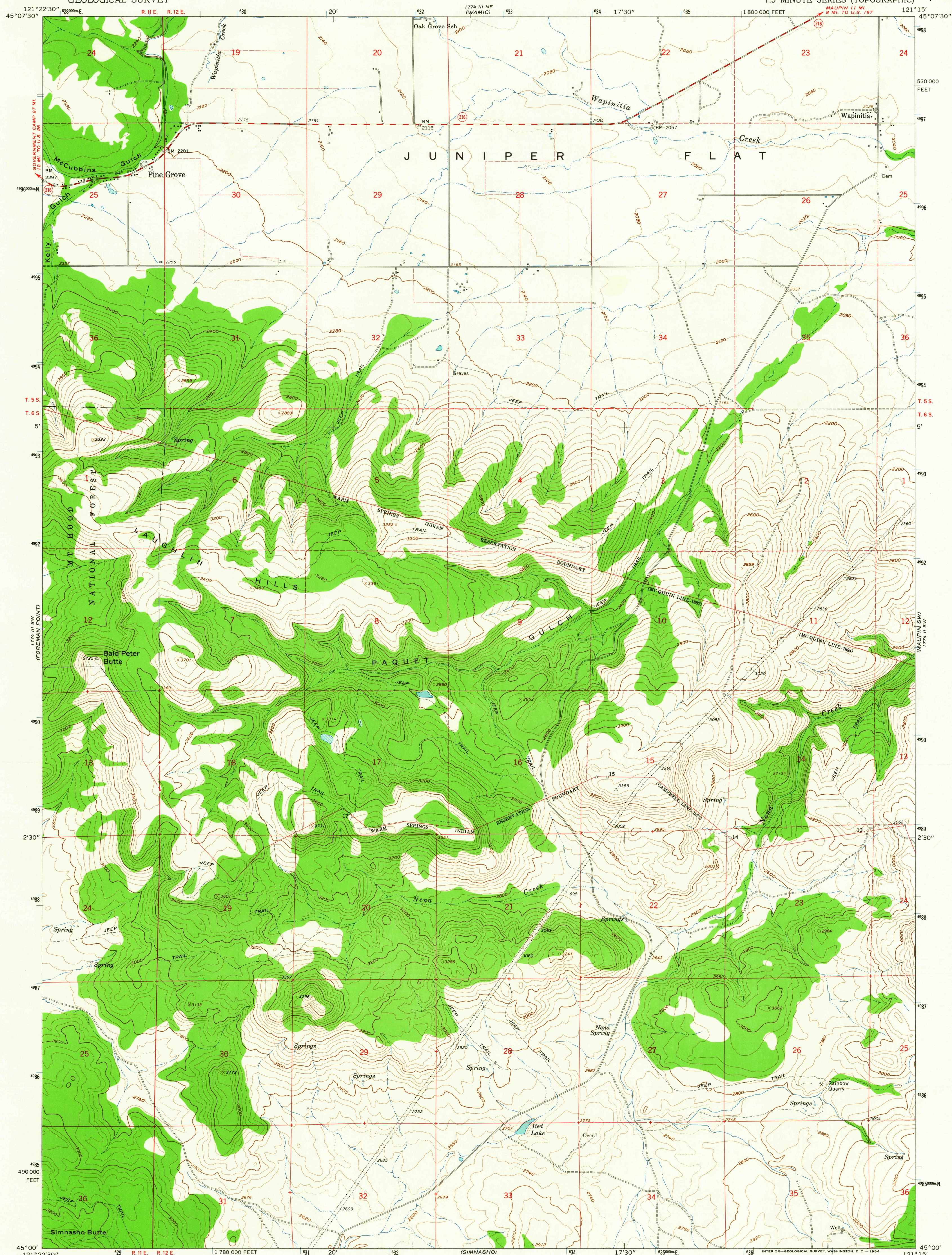


172 III NW  
ROCK CREEK  
RESERVOIR

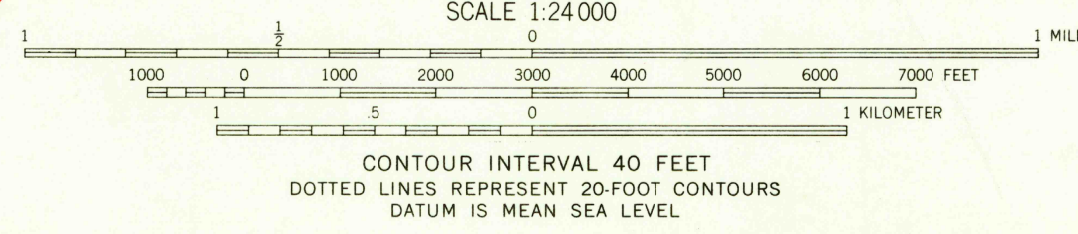
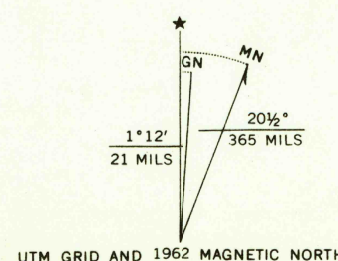
UNITED STATES  
DEPARTMENT OF THE INTERIOR  
GEOLOGICAL SURVEY

WAPINITIA QUADRANGLE  
OREGON—WASCO CO.  
7.5 MINUTE SERIES (TOPOGRAPHIC)

172 III NW  
MUTTON VALLEY



Mapped, edited, and published by the Geological Survey  
Control by USGS and USC&GS  
Topography by photogrammetric methods from aerial  
photographs taken 1957. Field checked 1962  
Polyconic projection. 1927 North American datum  
10,000-foot grid based on Oregon coordinate system, north zone  
1000-meter Universal Transverse Mercator grid ticks,  
zone 10, shown in blue  
Fine red dashed lines indicate selected fence lines



ROAD CLASSIFICATION  
Medium-duty ——— Light-duty ———  
Unimproved dirt ———  
State Route ○

USGS  
Historical File  
Topographic Division

WAPINITIA, OREG.  
N4500—W12115/7.5  
1962  
AMS 1774 III SE—SERIES V892

THIS MAP COMPLIES WITH NATIONAL MAP ACCURACY STANDARDS  
FOR SALE BY U.S. GEOLOGICAL SURVEY, DENVER 25, COLORADO OR WASHINGTON 25, D. C.  
A FOLDER DESCRIBING TOPOGRAPHIC MAPS AND SYMBOLS IS AVAILABLE ON REQUEST

2545  
APR 28 1964