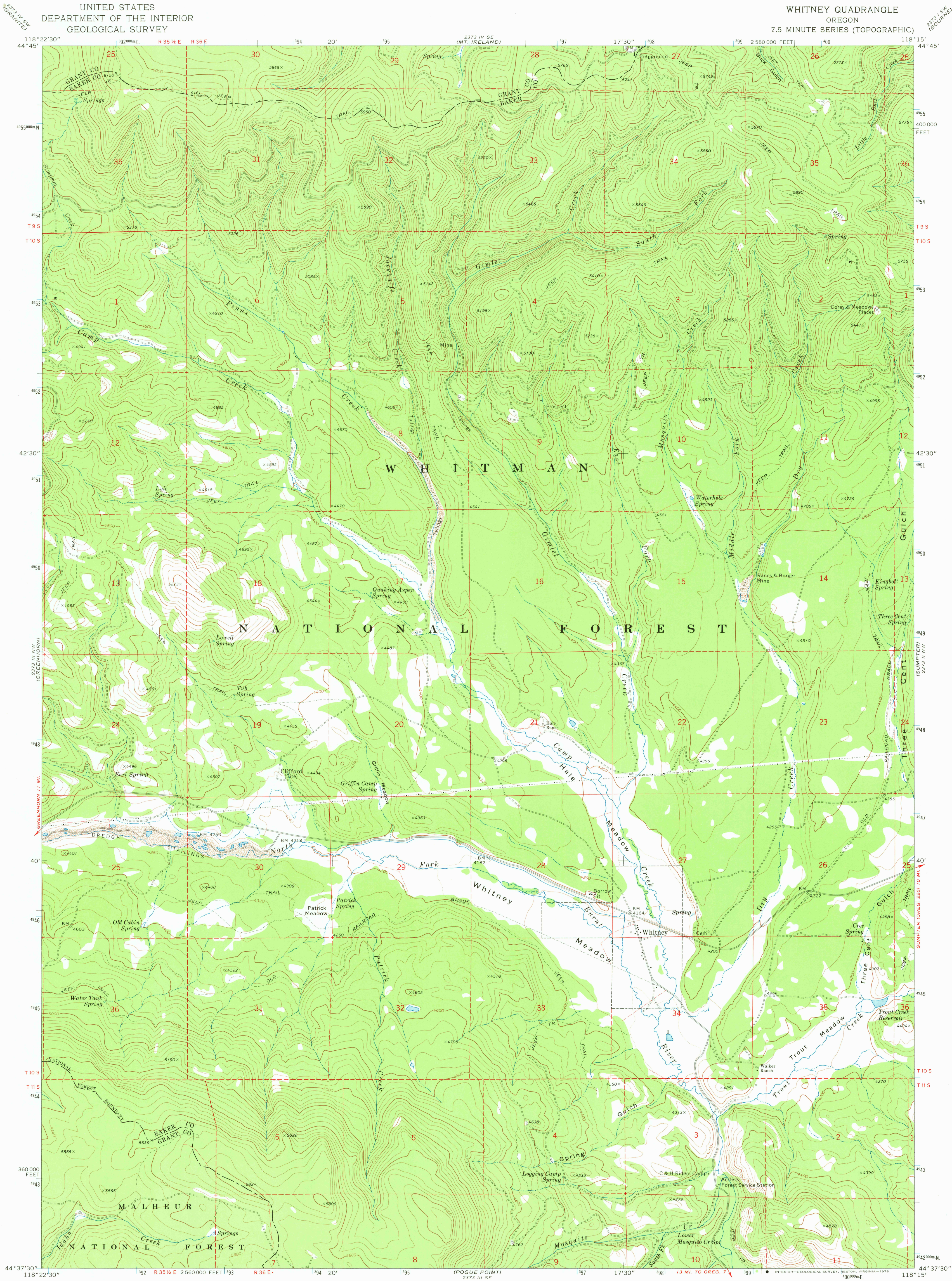
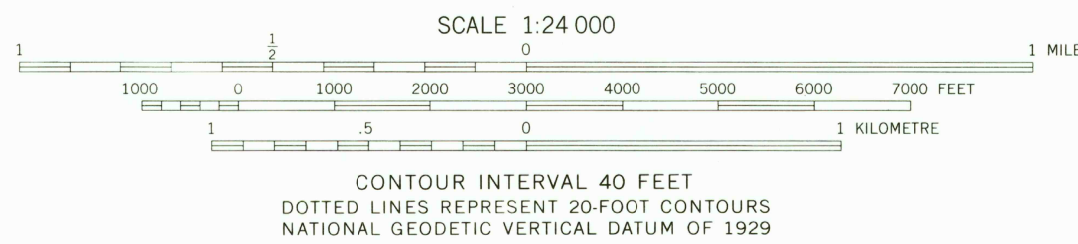
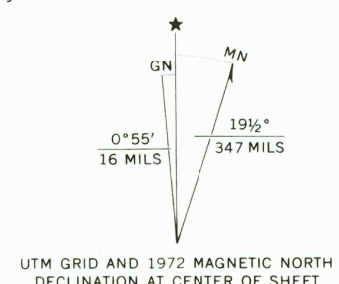


UNITED STATES
DEPARTMENT OF THE INTERIOR
GEOLOGICAL SURVEY

WHITNEY QUADRANGLE
OREGON
7.5 MINUTE SERIES (TOPOGRAPHIC)



Mapped, edited, and published by the Geological Survey
Control by USGS and NOS/NOAA
Topography by photogrammetric methods from aerial
photographs taken 1971. Field checked 1972
Projection and 10,000-foot grid ticks: Oregon coordinate
system, north zone (Lambert conformal conic)
1000-metre Universal Transverse Mercator grid ticks,
zone 11, shown in blue. 1927 North American datum
Fine red dashed lines indicate selected fence lines
Where omitted, land lines have not been established



ROAD CLASSIFICATION
Primary highway, hard surface
Secondary highway, hard surface
Interstate Route
U. S. Route
State Route
Light-duty road, hard or improved surface
Unimproved road

USGS
Historical File
Topographic Division

WHITNEY, OREG.
N4437.5-W11815.7.5
1972
AMS 2373 III NE-SERIES V892

THIS MAP COMPLIES WITH NATIONAL MAP ACCURACY STANDARDS
FOR SALE BY U. S. GEOLOGICAL SURVEY, DENVER, COLORADO 80225, OR RESTON, VIRGINIA 22092
A FOLDER DESCRIBING TOPOGRAPHIC MAPS AND SYMBOLS IS AVAILABLE ON REQUEST

2800
DEC 16 1976