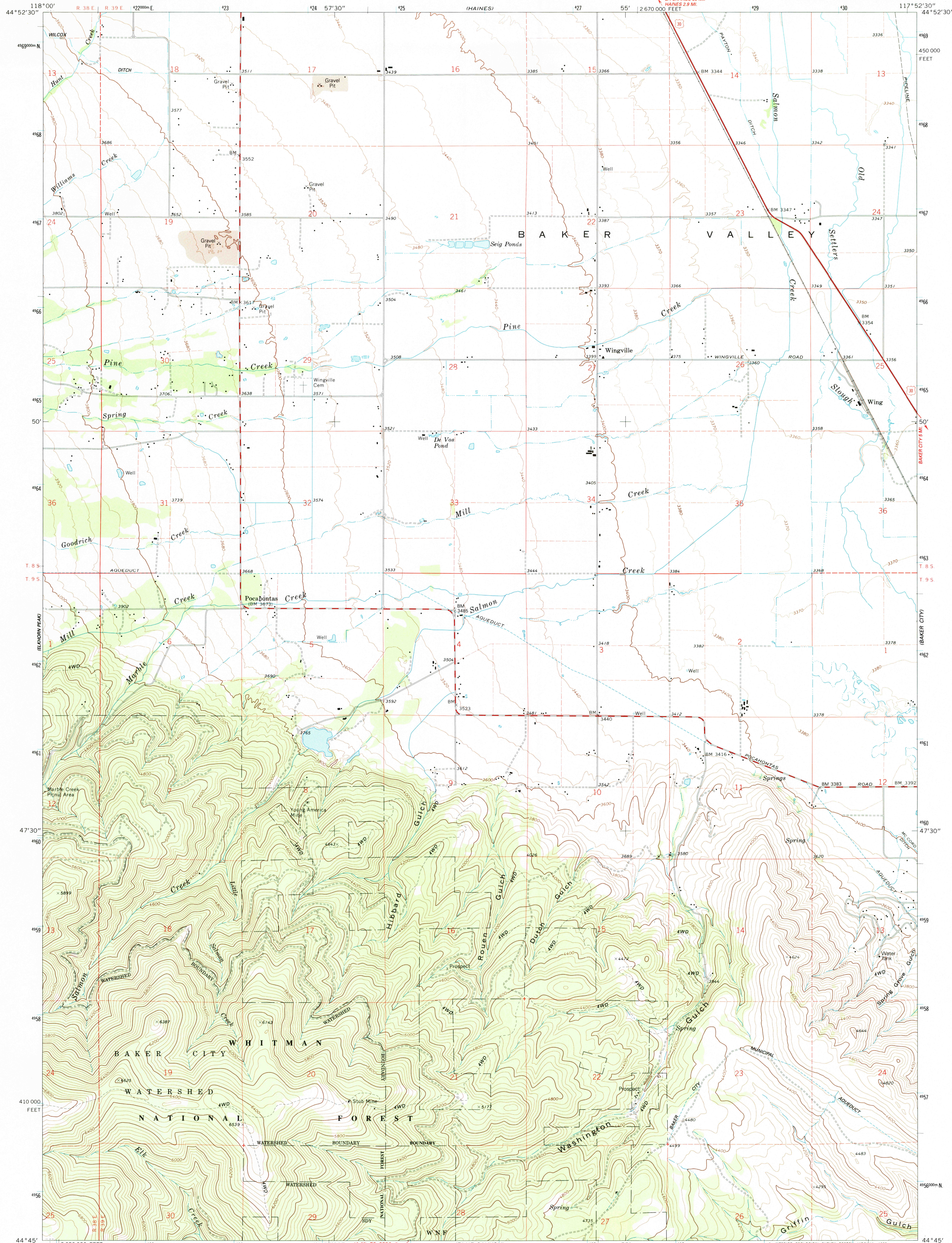
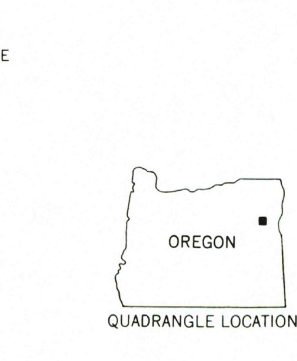
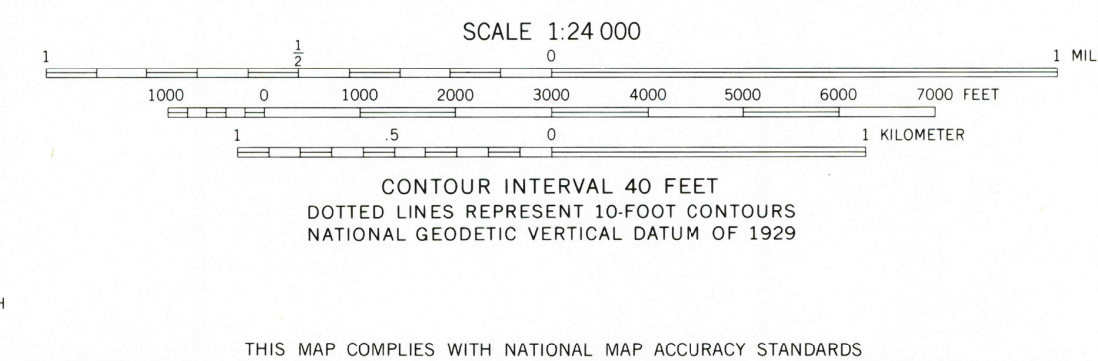
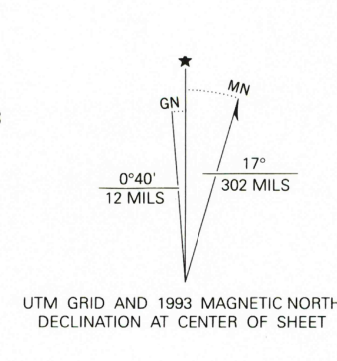


UNITED STATES
DEPARTMENT OF THE INTERIOR
GEOLOGICAL SURVEY

WINGVILLE QUADRANGLE
OREGON-BAKER CO.
7.5 MINUTE SERIES (TOPOGRAPHIC)



Produced by the United States Geological Survey
Control by USGS, NOS/NOAA and Oregon DOT
Compiled from aerial photographs taken 1966. Revised from aerial
photographs taken 1988-89-90. Field checked 1992. Map edited 1993
North American Datum of 1927 (NAD 27). Projection and
10,000-foot grid ticks: Oregon Coordinate System, north zone
(Lambert Conformal Conic). 1000-meter Universal Transverse
Mercator grid ticks, zone 11, shown in blue
The difference between NAD 27 and North American Datum of
1983 (NAD 83) for 7.5 minute intersections is given in USGS
Bulletin 1875. The NAD 83 is shown by dashed corner ticks
There may be private inholdings within the boundaries of the
National or State reservations shown on this map



ROAD CLASSIFICATION
Heavy-duty ——— Light-duty ———
Medium-duty ——— Unimproved dirt ———
U. S. Route ———

WINGVILLE, OREG.
44117-G8-TF-024

1993

DMA 2473 IV SW-SERIES V892

