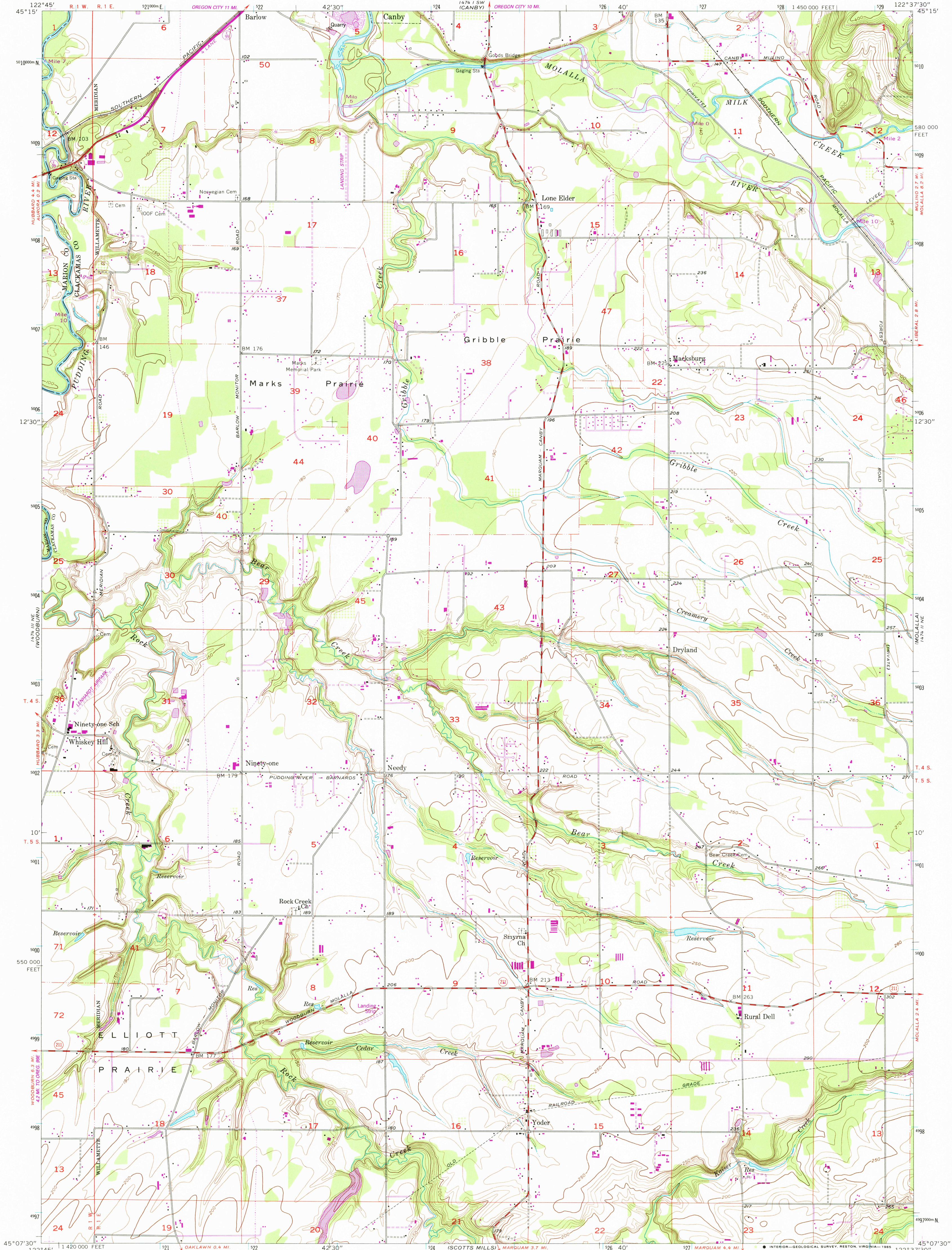


147°14' W
(SHERWOOD)

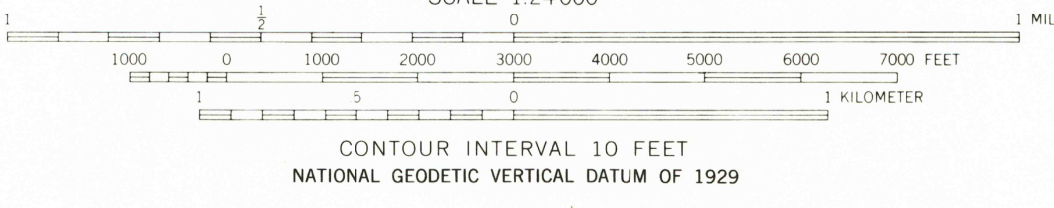
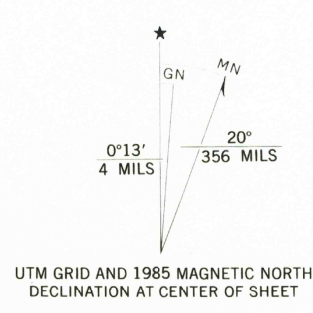
UNITED STATES
DEPARTMENT OF THE INTERIOR
GEOLOGICAL SURVEY

YODER QUADRANGLE
OREGON
7.5 MINUTE SERIES (TOPOGRAPHIC)

17°14' SE
(OREGON CITY)



Mapped, edited, and published by the Geological Survey
Control by USGS, USCGS, USCE, and State of Oregon
Topography from aerial photographs by Kelsh plotter
Aerial photographs taken 1953. Field check 1955
Polyconic projection. 1927 North American datum
10,000-foot grid based on Oregon coordinate system, north zone
1000-meter Universal Transverse Mercator grid ticks,
zone 10, shown in blue
To place on the predicted North American Datum 1983,
move the projection lines 22 meters north and
94 meters east as shown by dashed corner ticks
Revisions shown in purple compiled from aerial
photographs taken 1981 and other sources
This information not field checked. Map edited 1985



ROAD CLASSIFICATION	
Heavy-duty	Light-duty
Medium-duty	Unimproved dirt
U.S. Route	State Route

YODER, OREG.
45122-B6-TF-024

1955
PHOTOREVISED 1985
DMA 1474 II NW-SERIES V892

