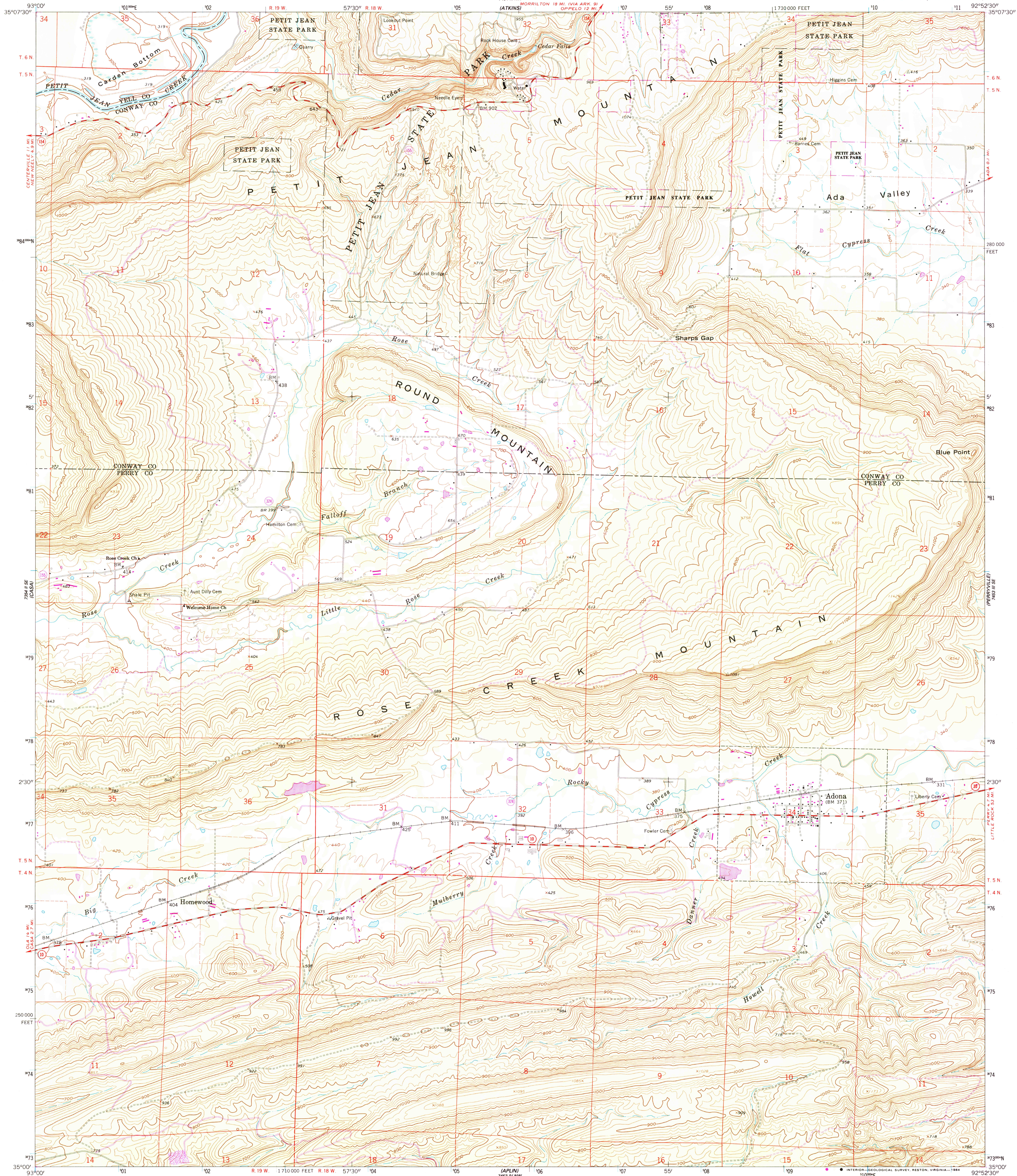


354 MI NE
MOBILE BEND

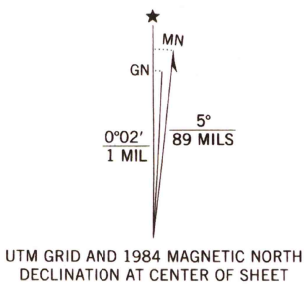
UNITED STATES
DEPARTMENT OF THE INTERIOR
GEOLOGICAL SURVEY

ADONA QUADRANGLE
ARKANSAS
7.5 MINUTE SERIES (TOPOGRAPHIC)

764 MI NE
MORRISON WEST



Mapped, edited, and published by the Geological Survey
Control by USGS, USC&GS, and USCE
Topography by photogrammetric methods from aerial
photographs taken 1958. Field checked 1961
Polyconic projection. 1927 North American datum.
10,000-foot grid based on Arkansas coordinate system, north zone
1000-meter Universal Transverse Mercator grid ticks,
zone 15, shown in blue
To place on the predicted North American Datum 1983
move the projection lines 7 meters south and
15 meters east as shown by dashed corner ticks
There may be private inholdings within the boundaries of
the National or State reservations shown on this map
Revisions shown in purple compiled from aerial photographs taken 1982 and
other sources. This information not field checked. Map edited 1984



THIS MAP COMPLIES WITH NATIONAL MAP ACCURACY STANDARDS
FOR SALE BY U. S. GEOLOGICAL SURVEY, DENVER, COLORADO 80225 OR RESTON, VIRGINIA 22092
AND ARKANSAS GEOLOGICAL COMMISSION, LITTLE ROCK, ARKANSAS 72204
A FOLDER DESCRIBING TOPOGRAPHIC MAPS AND SYMBOLS IS AVAILABLE ON REQUEST



ROAD CLASSIFICATION
Primary highway, hard surface
Secondary highway, hard surface
Light duty road, hard or improved surface
Unimproved road
Interstate Route
U. S. Route
State Route

RETURN TO:
NHD HISTORICAL MAP ARCHIVES
USGS NATIONAL CENTER, MS-522
RESTON, VA 22092

ADONA, ARK.
35092-A8-TF-024
1961
PHOTOREVISED 1984
DMA 7454 III SW-SERIES 7884