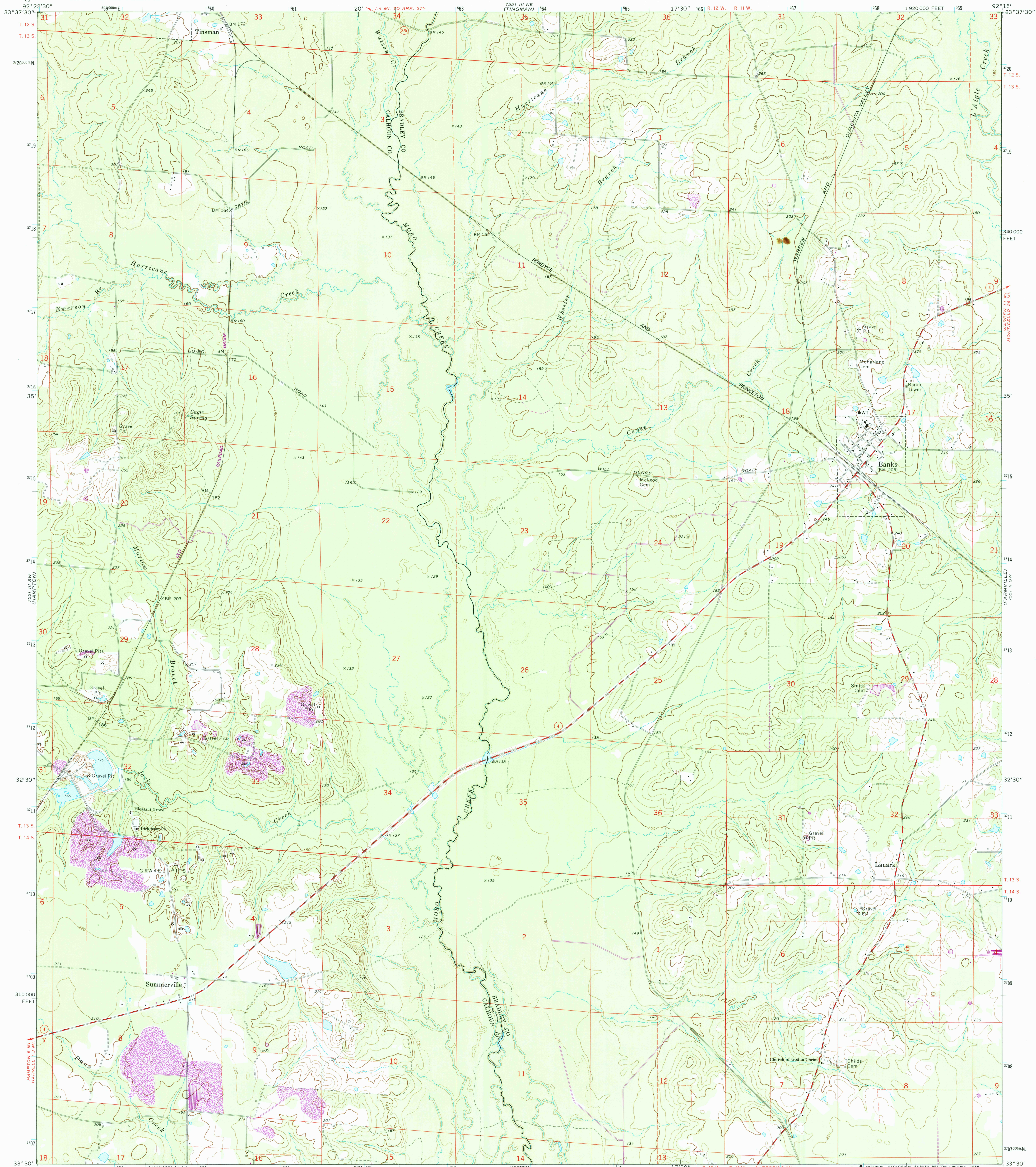


UNITED STATES  
DEPARTMENT OF THE INTERIOR  
GEOLOGICAL SURVEY

BANKS QUADRANGLE  
ARKANSAS  
7.5 MINUTE SERIES (TOPOGRAPHIC)



Mapped, edited, and published by the Geological Survey

Control by USGS and NOS/NOAA

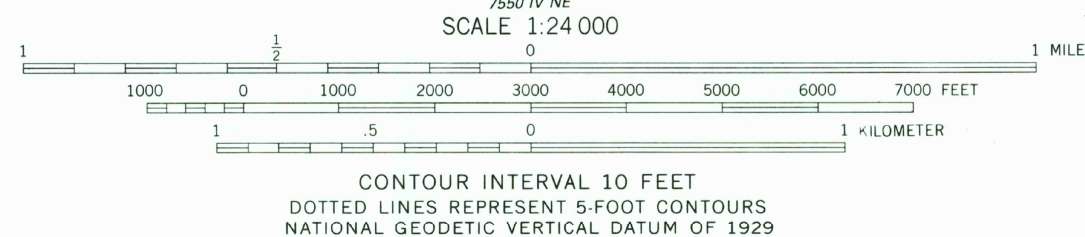
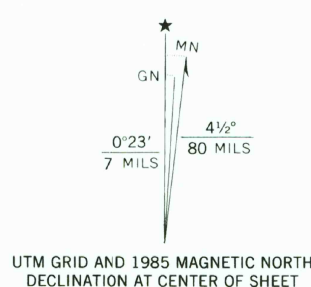
Topography by photogrammetric methods from aerial  
photographs taken 1972. Field checked 1973

Projection and 10,000-foot grid ticks: Arkansas coordinate  
system, south zone (Lambert conformal conic)  
1000-meter Universal Transverse Mercator grid ticks,  
zone 15, shown in blue. 1927 North American datum

Fine red dashed lines indicate selected fence and field lines where  
generally visible on aerial photographs. This information is unchecked

To place on the predicted North American Datum 1983,  
move the projection lines 10 meters south and  
14 meters east as shown by dashed corner ticks

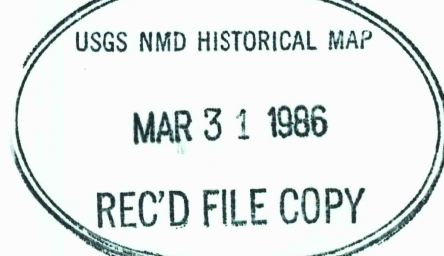
Revisions shown in purple compiled from aerial photographs taken 1984 and  
other sources. This information not field checked. Map edited 1985



THIS MAP COMPLIES WITH NATIONAL MAP ACCURACY STANDARDS  
FOR SALE BY U.S. GEOLOGICAL SURVEY, DENVER, COLORADO 80225, OR RESTON, VIRGINIA 22092  
AND ARKANSAS GEOLOGICAL COMMISSION, LITTLE ROCK, ARKANSAS 72204  
A FOLDER DESCRIBING TOPOGRAPHIC MAPS AND SYMBOLS IS AVAILABLE ON REQUEST



ROAD CLASSIFICATION	
Primary highway, hard surface	Light-duty road, hard or improved surface
Secondary highway, hard surface	Unimproved road
Interstate Route	U.S. Route
	State Route



BANKS, ARK.

33092-E3-TF-024

1973  
PHOTOREVISED 1985  
DMA 7551 III SE-SERIES V884