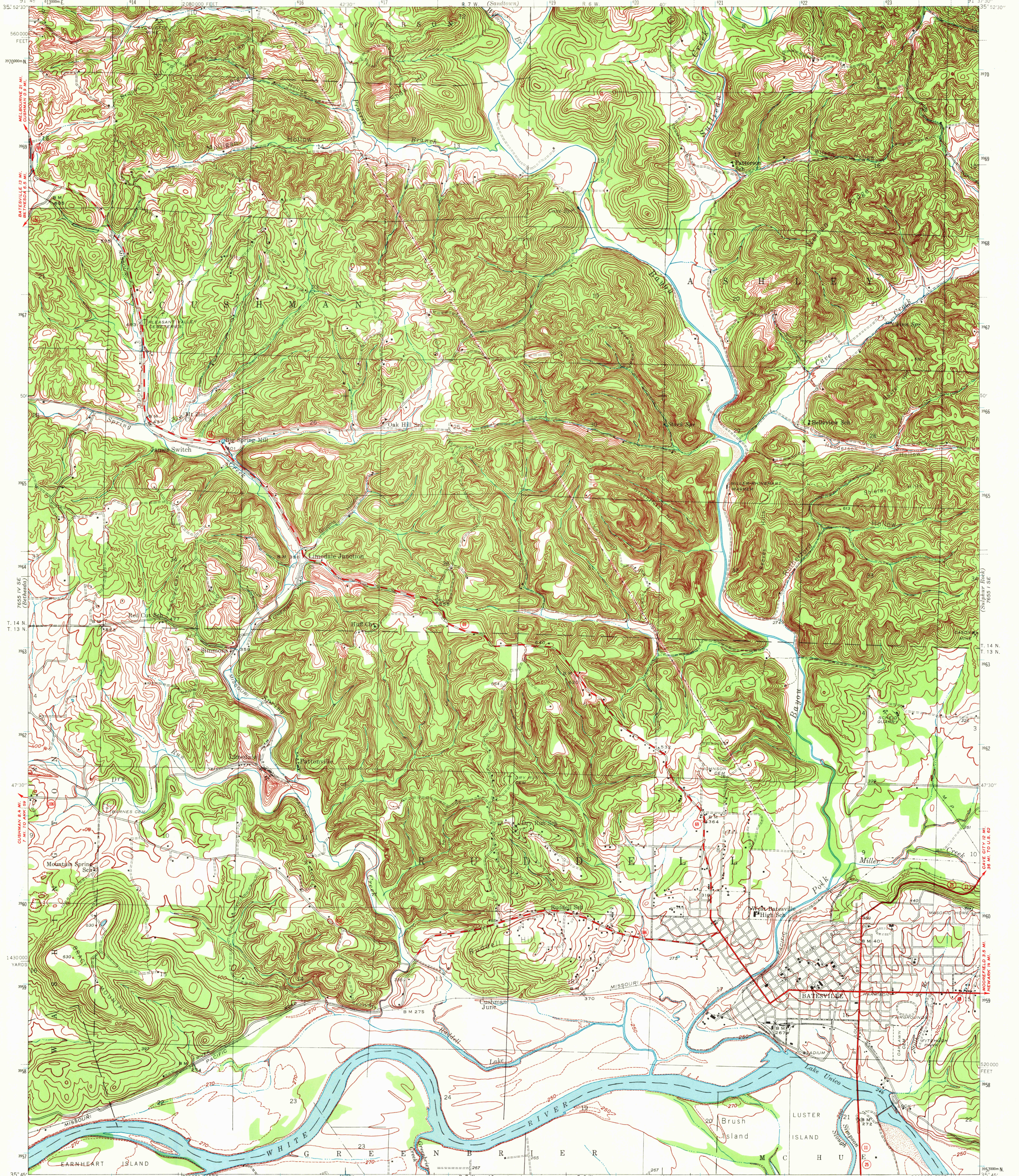


UNITED STATES
DEPARTMENT OF THE INTERIOR
GEOLOGICAL SURVEY

ARKANSAS
(INDEPENDENCE COUNTY)
BATESVILLE QUADRANGLE
7½-MINUTE SERIES



Map by the Geological Survey
1942
Landmark buildings only,
shown in the city of Batesville

UTM GRID AND 1942 MAGNETIC NORTH
DECLINATION AT CENTER OF SHEET

USGS
Historical File
Topographic Division

FOR SALE BY U. S. GEOLOGICAL SURVEY, DENVER, COLORADO 80225 OR WASHINGTON, D. C. 20242
AND BY THE ARKANSAS GEOLOGICAL AND CONSERVATION COMMISSION, LITTLE ROCK, ARKANSAS 72201
A FOLDER DESCRIBING TOPOGRAPHIC MAPS AND SYMBOLS IS AVAILABLE ON REQUEST

USGS
Historical File
Topographic Division

ROAD CLASSIFICATION
Heavy-duty ——— 4 LANE 16 LANE Light-duty ———
Medium-duty ——— 4 LANE 16 LANE Unimproved dirt ———
U. S. Route State Route

BATESVILLE, ARK.

N 3545—W 3537.5/7.5
1943
AMS 7655 I SW—SERIES V884

USGS
Historical File
Topographic Division

1645
AUG 9 1972