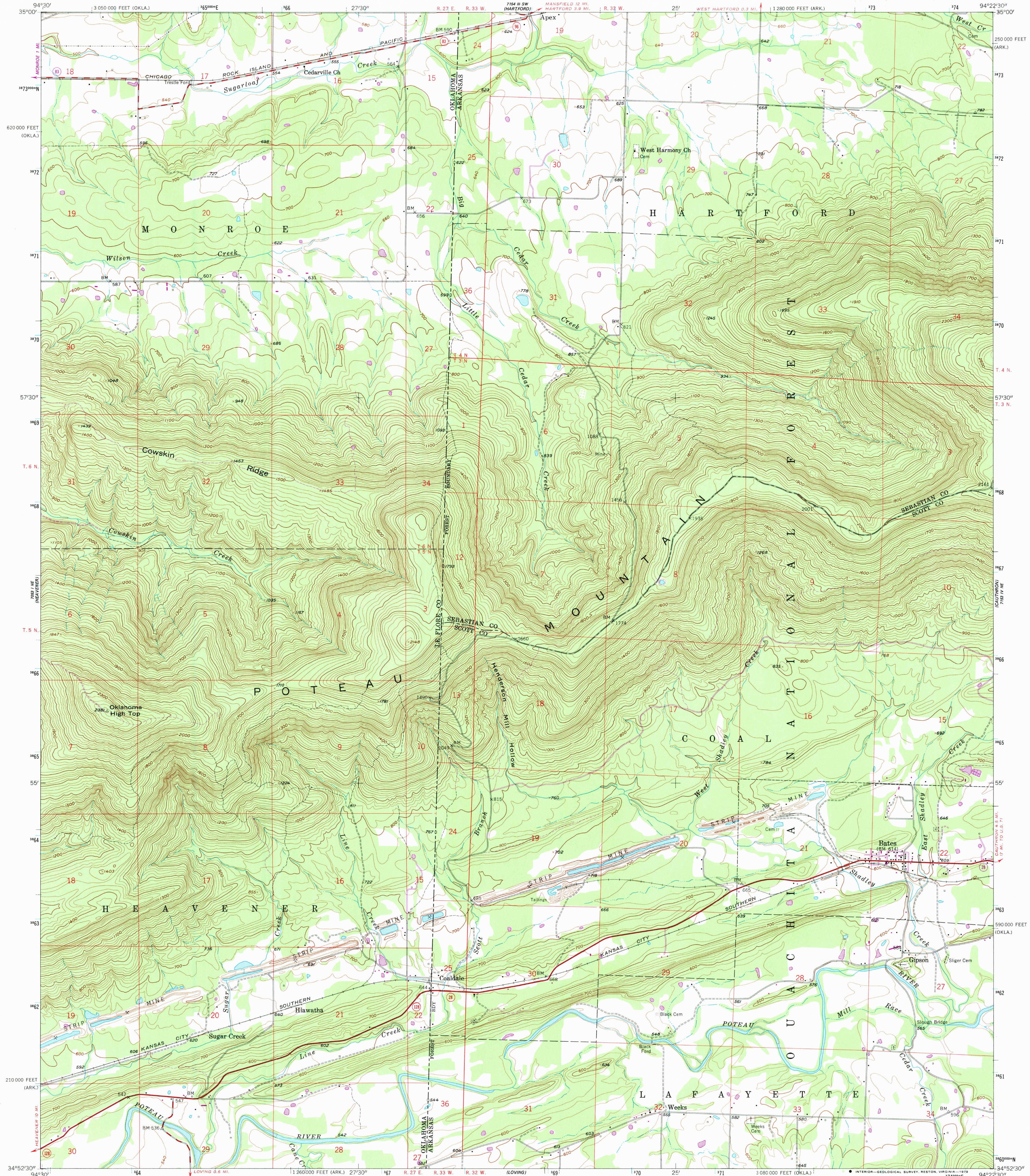
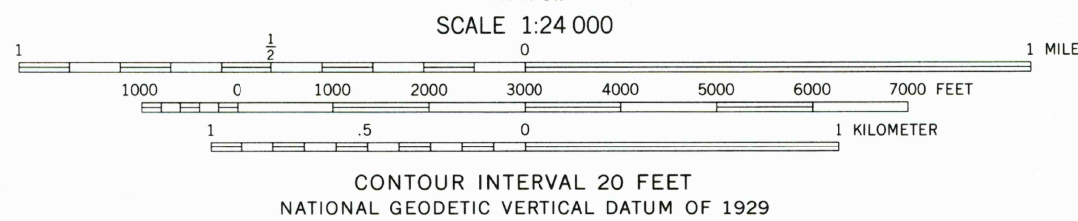
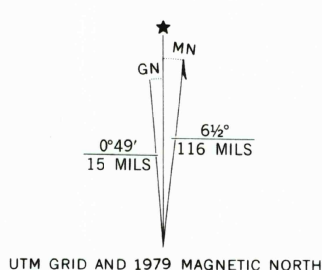


UNITED STATES  
DEPARTMENT OF THE INTERIOR  
GEOLOGICAL SURVEY

BATES QUADRANGLE  
ARKANSAS-OKLAHOMA  
7.5 MINUTE SERIES (TOPOGRAPHIC)  
NW 4 BATES 15' QUADRANGLE



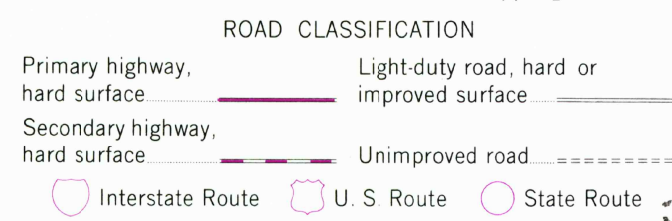
Mapped, edited, and published by the Geological Survey  
Control by USGS, USC&GS, and USCE  
Topography from aerial photographs by multiplex methods  
Aerial photographs taken 1955. Field check 1958  
Polyconic projection. 1927 North American datum  
10,000-foot grids based on Arkansas coordinate system, north zone,  
and Oklahoma coordinate system, south zone.  
To place on the predicted North American Datum 1983  
move the projection lines 6 meters south and  
19 meters east as shown by dashed corner ticks  
1000-meter Universal Transverse Mercator grid ticks,  
zone 15, shown in blue  
There may be private inholdings within the boundaries of  
the National or State reservations shown on this map  
Unchecked elevations are shown in brown



THIS MAP COMPLIES WITH NATIONAL MAP ACCURACY STANDARDS  
FOR SALE BY U. S. GEOLOGICAL SURVEY, DENVER, COLORADO 80225, OR RESTON, VIRGINIA 22092,  
ARKANSAS GEOLOGICAL COMMISSION, LITTLE ROCK, ARKANSAS 72204,  
AND OKLAHOMA GEOLOGICAL SURVEY, NORMAN, OKLAHOMA 73069  
A FOLDER DESCRIBING TOPOGRAPHIC MAPS AND SYMBOLS IS AVAILABLE ON REQUEST



Revisions shown in purple compiled from aerial  
photographs taken 1977. Map edited 1979  
This information not field checked



BATES, ARK.-OKLA.  
NW 4 BATES 15' QUADRANGLE  
N 3452.5-W 9422.5/7.5  
1958  
PHOTOREVISED 1979  
DMA 7153 IV NW-SERIES V884

AUG 11 1988