

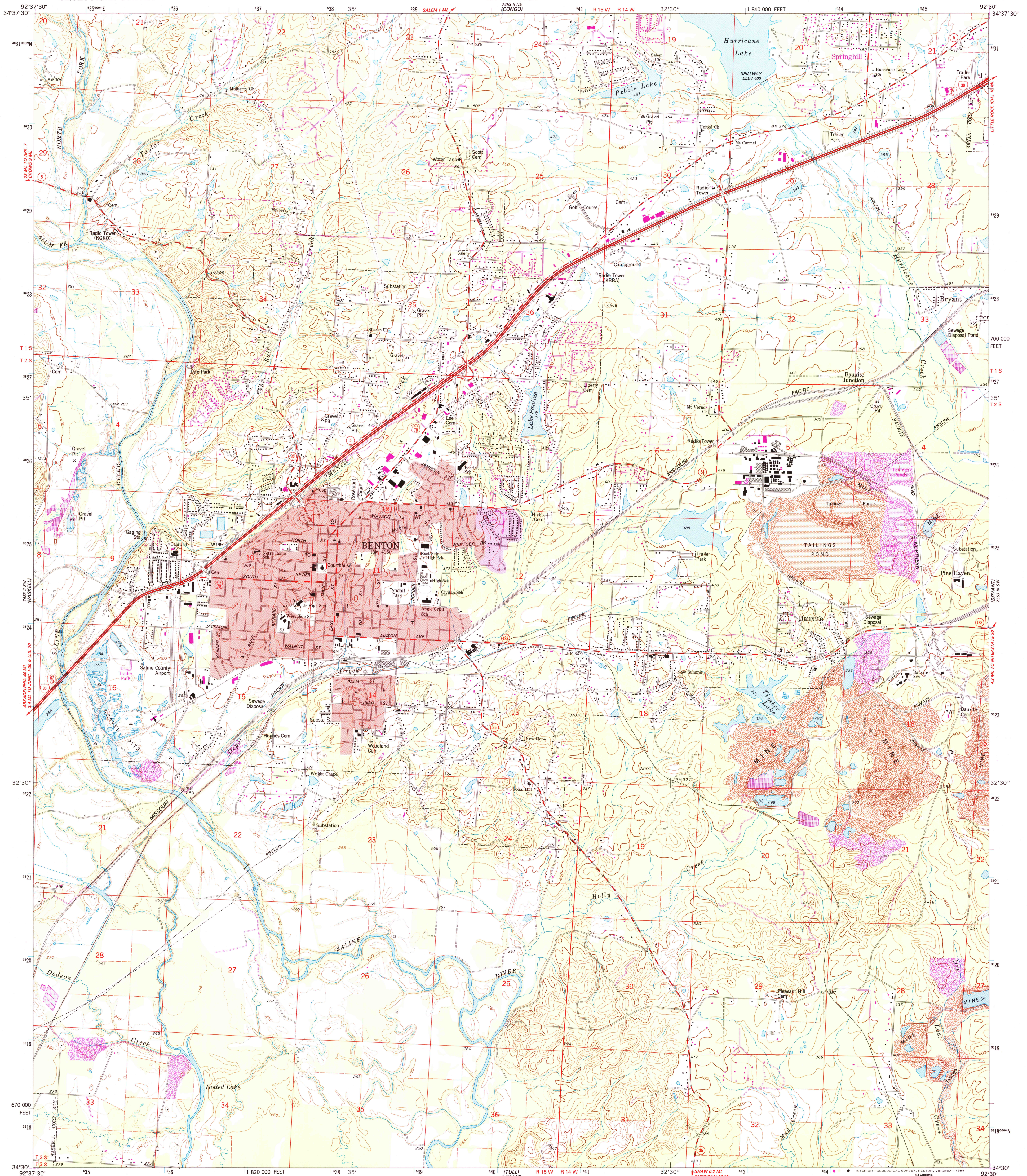
2831 NW
(LAKESIDE)

UNITED STATES
DEPARTMENT OF THE INTERIOR
GEOLOGICAL SURVEY

STATE OF ARKANSAS
GEOLOGICAL COMMISSION
LITTLE ROCK

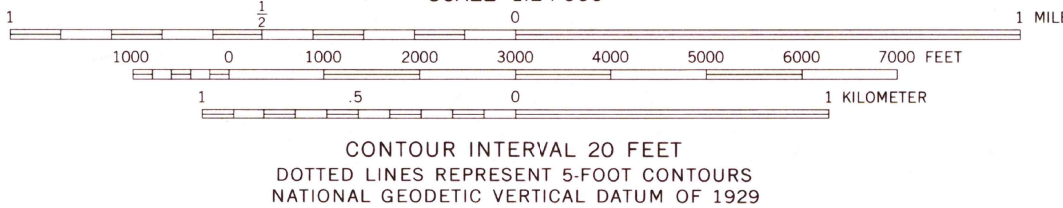
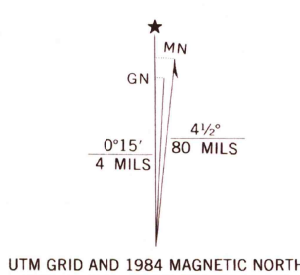
BENTON QUADRANGLE
ARKANSAS—SALINE CO.
7.5 MINUTE SERIES (TOPOGRAPHIC)

2831 NW
(LAKESIDE)



2831 NW
(LAKESIDE)

Mapped, edited, and published by the Geological Survey
Control by USGS and NOS/NOAA
Topography by photogrammetric methods from aerial
photographs taken 1973. Field checked 1974
Supersedes map dated 1944
Projection and 10,000-foot grid ticks: Arkansas coordinate
system, south zone (Lambert conformal conic)
1000-meter Universal Transverse Mercator grid ticks,
zone 15, shown in blue. 1927 North American datum
Red tint indicates areas in which only landmark buildings are shown
To place on the predicted North American Datum 1983,
move the projection lines 8 meters south and
15 meters east as shown by dashed corner ticks



THIS MAP COMPLIES WITH NATIONAL MAP ACCURACY STANDARDS
FOR SALE BY U. S. GEOLOGICAL SURVEY, DENVER, COLORADO 80225, OR RESTON, VIRGINIA 22092
AND ARKANSAS GEOLOGICAL COMMISSION, LITTLE ROCK, ARKANSAS 72204
A FOLDER DESCRIBING TOPOGRAPHIC MAPS AND SYMBOLS IS AVAILABLE ON REQUEST



QUADRANGLE LOCATION

ROAD CLASSIFICATION	
Primary highway, hard surface	Light-duty road, hard or improved surface
Secondary highway, hard surface	Unimproved road
Interstate Route	U. S. Route
	State Route

BENTON, ARK.

34092 E5-TF-024

RETURN TO:
NHD HISTORICAL MAP ARCHIVES
USGS NATIONAL CENTER, MS-522
RESTON, VA 22092

1974
PHOTOREVISED 1984
DMA 7453 II SE—SERIES V884

Revisions shown in purple compiled from aerial
photographs taken 1982 and other sources
This information not field checked. Map edited 1984
Purple tint indicates extension of urban area.