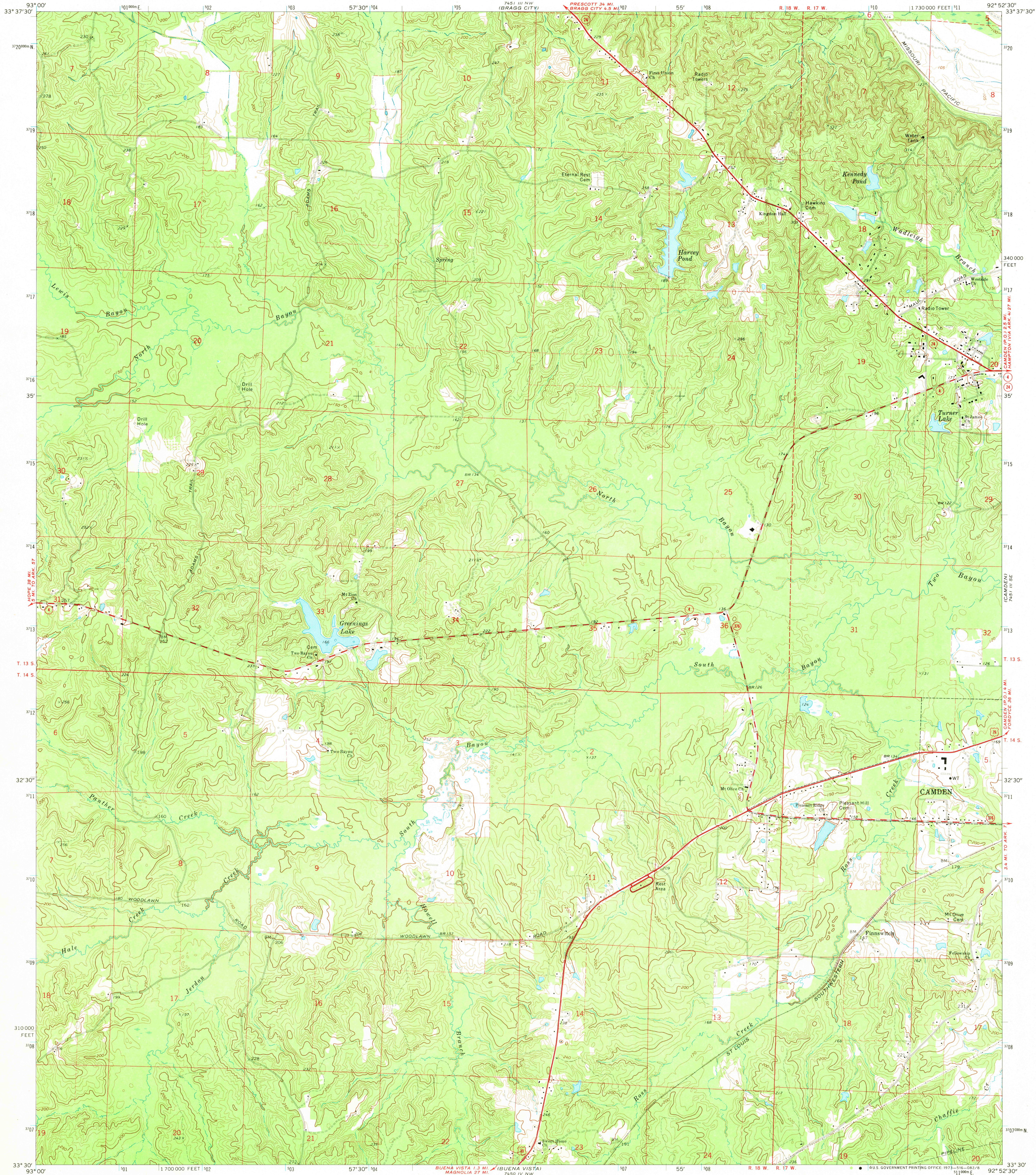


UNITED STATES  
DEPARTMENT OF THE INTERIOR  
GEOLOGICAL SURVEY

CAMDEN SW QUADRANGLE  
ARKANSAS—OUACHITA CO.  
7.5 MINUTE SERIES (TOPOGRAPHIC)  
SW 1/4 CAMDEN 15' QUADRANGLE



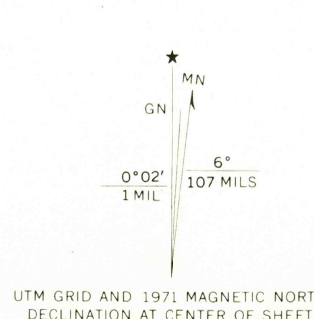
Mapped, edited, and published by the Geological Survey

Control by USGS and USC&GS

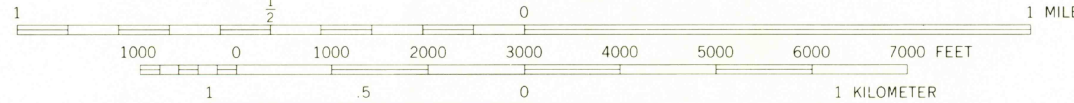
Topography by photogrammetric methods from aerial photographs taken 1970. Field checked 1971

Polyconic projection. 1927 North American datum  
10,000-foot grid based on Arkansas coordinate system, south zone  
1000-meter Universal Transverse Mercator grid ticks, zone 15, shown in blue

Fine red dashed lines indicate selected fence and field lines where generally visible on aerial photographs. This information is unchecked



SCALE 1:24 000



THIS MAP COMPLIES WITH NATIONAL MAP ACCURACY STANDARDS  
FOR SALE BY U.S. GEOLOGICAL SURVEY, DENVER, COLORADO 80225, OR WASHINGTON, D. C. 20242  
AND BY THE ARKANSAS GEOLOGICAL COMMISSION, LITTLE ROCK, ARKANSAS 72201  
A FOLDER DESCRIBING TOPOGRAPHIC MAPS AND SYMBOLS IS AVAILABLE ON REQUEST



ROAD CLASSIFICATION  
Primary highway, hard surface ————  
Secondary highway, hard surface ————  
Unimproved road ————  
Interstate Route ————  
U. S. Route ————  
State Route ————

SEP 28 1973  
CAMDEN SW, ARK.  
SW 1/4 CAMDEN 15' QUADRANGLE  
N3330-W9252.5/7.5

1971

AMS 7451 III SW—SERIES V884

Hoey  
2520  
50 plane