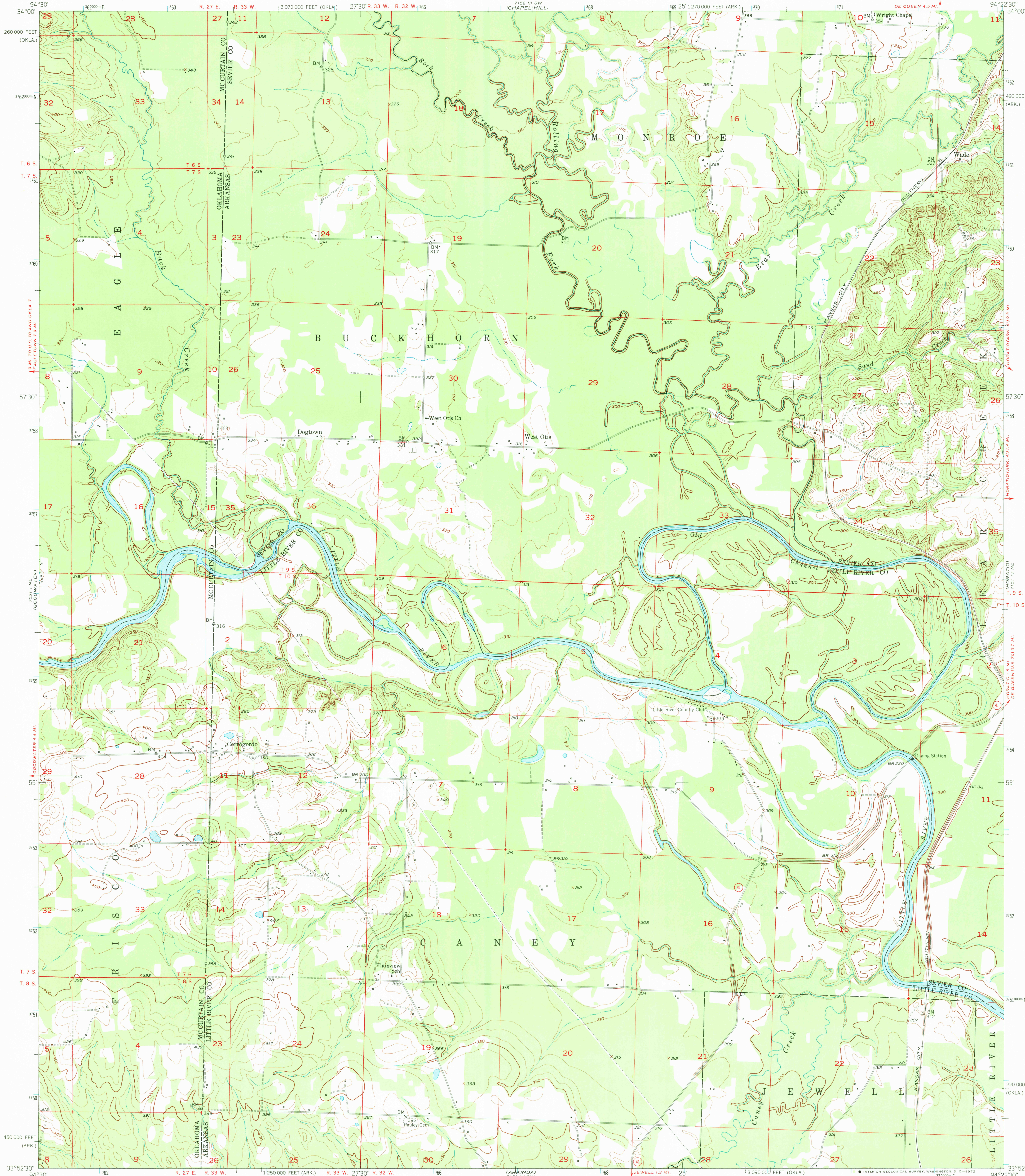


7302 U.S.E.
GEOREF. 17-50-300

UNITED STATES
DEPARTMENT OF THE INTERIOR
GEOLOGICAL SURVEY

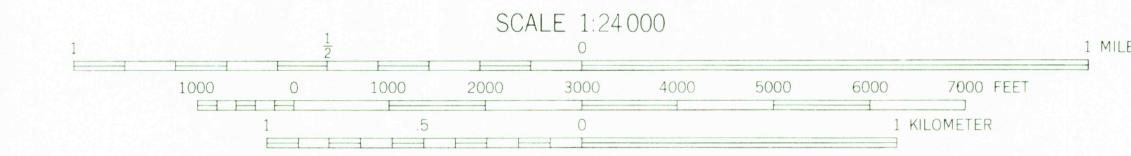
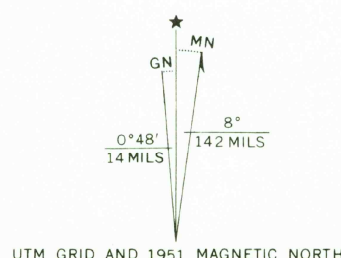
CERROGORDO QUADRANGLE
ARKANSAS-OKLAHOMA
7.5 MINUTE SERIES (TOPOGRAPHIC)

7152 U.S.E.
(DE QUEEN)



(BOOK 4)
700 U.S.E.

Mapped, edited, and published by the Geological Survey
Control by USGS, USC&GS, and USCE
Culture and drainage in part compiled from aerial photographs
taken 1949. Topography by plane-table methods 1950-1951
Polyconic projection. 1927 North American datum
10,000-foot grids based on Arkansas coordinate system,
south zone, and Oklahoma coordinate system, south zone
1000-meter Universal Transverse Mercator grid ticks,
zone 15, shown in blue



CONTOUR INTERVAL 10 FEET
DATUM IS MEAN SEA LEVEL

THIS MAP COMPLIES WITH NATIONAL MAP ACCURACY STANDARDS
FOR SALE BY U.S. GEOLOGICAL SURVEY, DENVER, COLORADO 80225 OR WASHINGTON, D. C. 20242,
ARKANSAS GEOLOGICAL COMMISSION, LITTLE ROCK, ARKANSAS 72201,
AND OKLAHOMA GEOLOGICAL SURVEY, NORMAN, OKLAHOMA 73069
A FOLDER DESCRIBING TOPOGRAPHIC MAPS AND SYMBOLS IS AVAILABLE ON REQUEST

ROAD CLASSIFICATION
Heavy-duty 4 LANE 6 LANE Light-duty
Medium-duty 4 LANE 6 LANE Unimproved dirt
U.S. Route State Route

USGS
HISTORICAL FILE
TOPOGRAPHIC DIVISION

CERROGORDO, ARK.-OKLA.
N3352.5-W9422.5/7.5

1951

AMS 7151 IV NW-SERIES V884

1290
NOV 27 1972