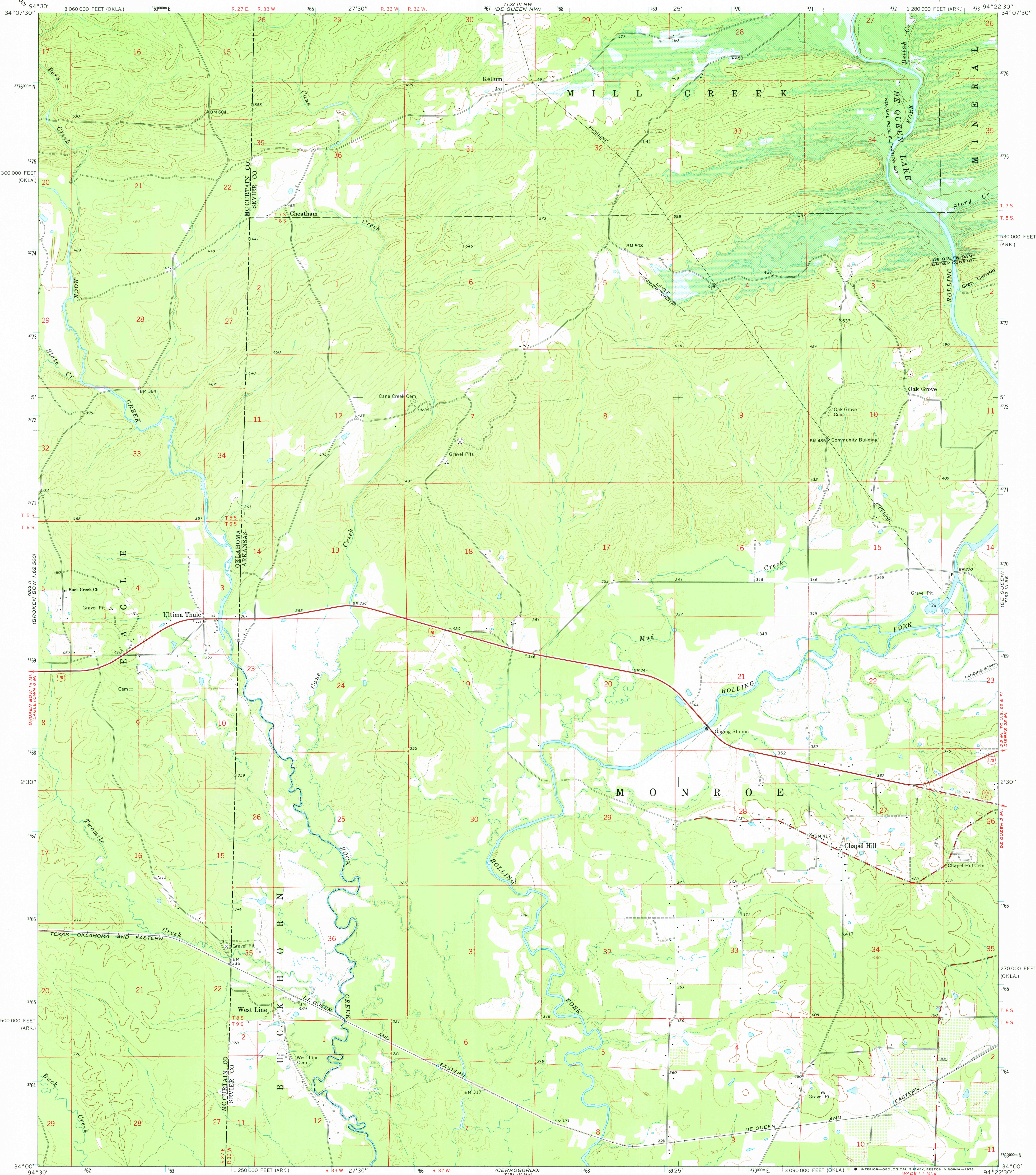


UNITED STATES
DEPARTMENT OF THE INTERIOR
GEOLOGICAL SURVEY

CHAPEL HILL QUADRANGLE
ARKANSAS—OKLAHOMA
7.5 MINUTE SERIES (TOPOGRAPHIC)



Mapped, edited, and published by the Geological Survey

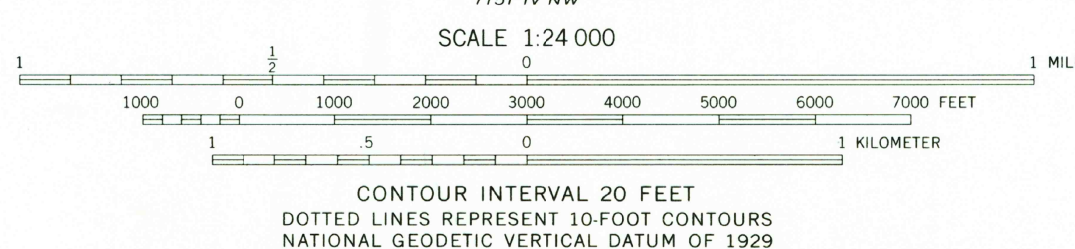
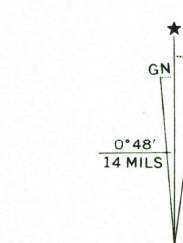
Control by USGS and USC&GS

Topography by photogrammetric methods from aerial photographs taken 1964. Field checked 1965

Polycyclic projection. 1927 North American datum 10,000-foot grids based on Arkansas coordinate system, south zone and Oklahoma coordinate system, south zone 1000-meter Universal Transverse Mercator grid ticks, zone 15, shown in blue

Blue hatching indicates area to be submerged by De Queen Reservoir Area covered by dashed light-blue pattern is subject to controlled inundation

Fine red dashed lines indicate selected fence and field lines where generally visible on aerial photographs. This information is unchecked



THIS MAP COMPLIES WITH NATIONAL MAP ACCURACY STANDARDS
FOR SALE BY U. S. GEOLOGICAL SURVEY, DENVER, COLORADO 80225, OR RESTON, VIRGINIA 22092
AND ARKANSAS GEOLOGICAL COMMISSION, LITTLE ROCK, ARKANSAS 72204
A FOLDER DESCRIBING TOPOGRAPHIC MAPS AND SYMBOLS IS AVAILABLE ON REQUEST



USGS
Historical File
Topographic Division

CHAPEL HILL, ARK.—OKLA.
N3400—W9422.5/7.5

1965

AMS 7152 III SW—SERIES V884

MAR 17 1978

2,850