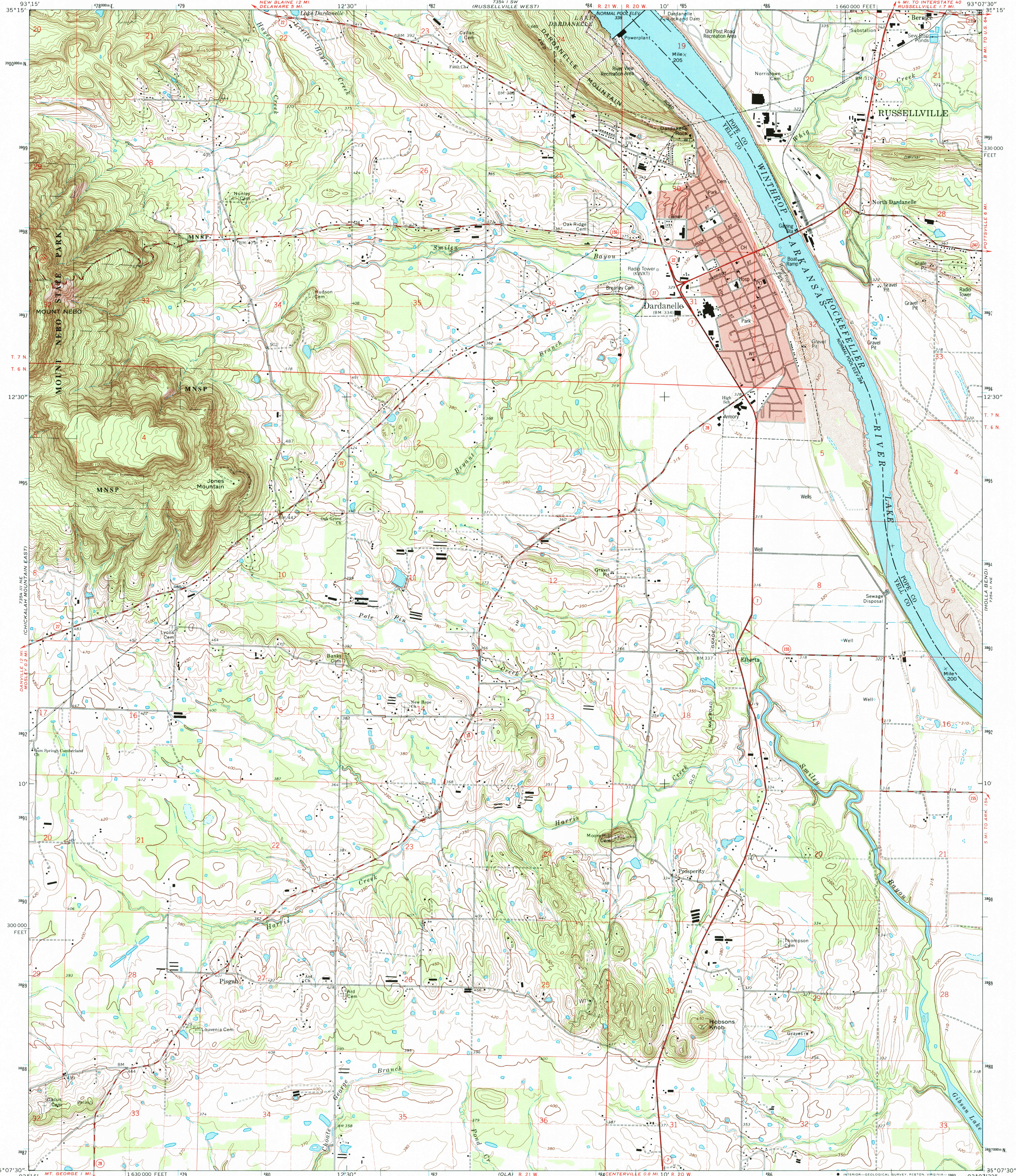
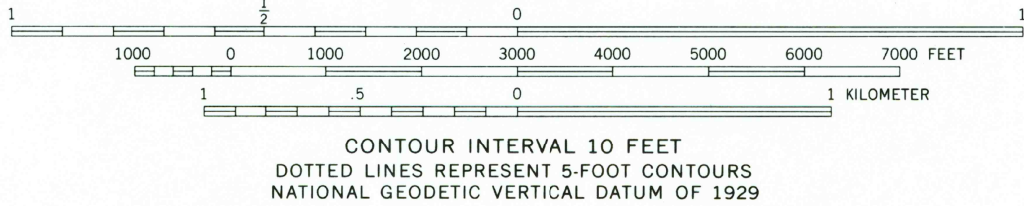
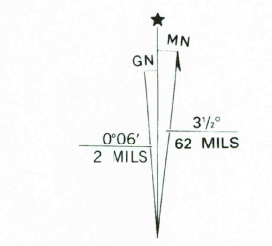


UNITED STATES
DEPARTMENT OF THE INTERIOR
GEOLOGICAL SURVEY

DARDANELLE QUADRANGLE
ARKANSAS
7.5 MINUTE SERIES (TOPOGRAPHIC)



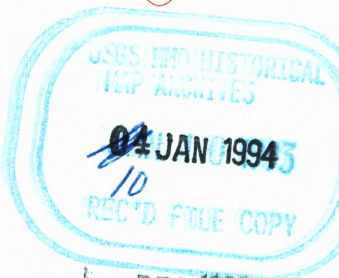
Produced by the United States Geological Survey
Control by USGS and NOS/NOAA
Topography by photogrammetric methods from aerial photographs taken 1971. Field checked 1972. Revised from aerial photographs taken 1969-90. Field checked 1992. Map edited 1993
Projection and 10,000-foot grid ticks: Arkansas coordinate system, north zone (Lambert conformal conic)
1000-meter Universal Transverse Mercator grid ticks, zone 15, shown in blue
1927 North American Datum (NAD 27)
North American Datum of 1983 (NAD 83) is shown by dashed corner ticks
The values of the shift between NAD 27 and NAD 83 for 7.5-minute intersections are given in USGS Bulletin 1875
There may be private inholdings within the boundaries of the National or State reservations shown on this map
Red tint indicates area in which only landmark buildings are shown
Fine red dashed lines indicate selected fence and field lines where generally visible on aerial photographs. This information is unchecked



COMPLIES WITH U.S. GEOLOGICAL SURVEY STANDARDS FOR SPATIAL ACCURACY - CLASS 2
FOR SALE BY U.S. GEOLOGICAL SURVEY, DENVER, COLORADO 80225, OR RESTON, VIRGINIA 22092
AND ARKANSAS GEOLOGICAL COMMISSION, LITTLE ROCK, ARKANSAS 72204
A FOLDER DESCRIBING TOPOGRAPHIC MAPS AND SYMBOLS IS AVAILABLE ON REQUEST



ROAD CLASSIFICATION	
Primary highway, hard surface	Light-duty road, hard or improved surface
Secondary highway, hard surface	Unimproved road
Interstate Route	U. S. Route
	State Route



DARDANELLE, ARK.
35093-B2-TF-024
1993
DMA 7354 II NW-SERIES V884