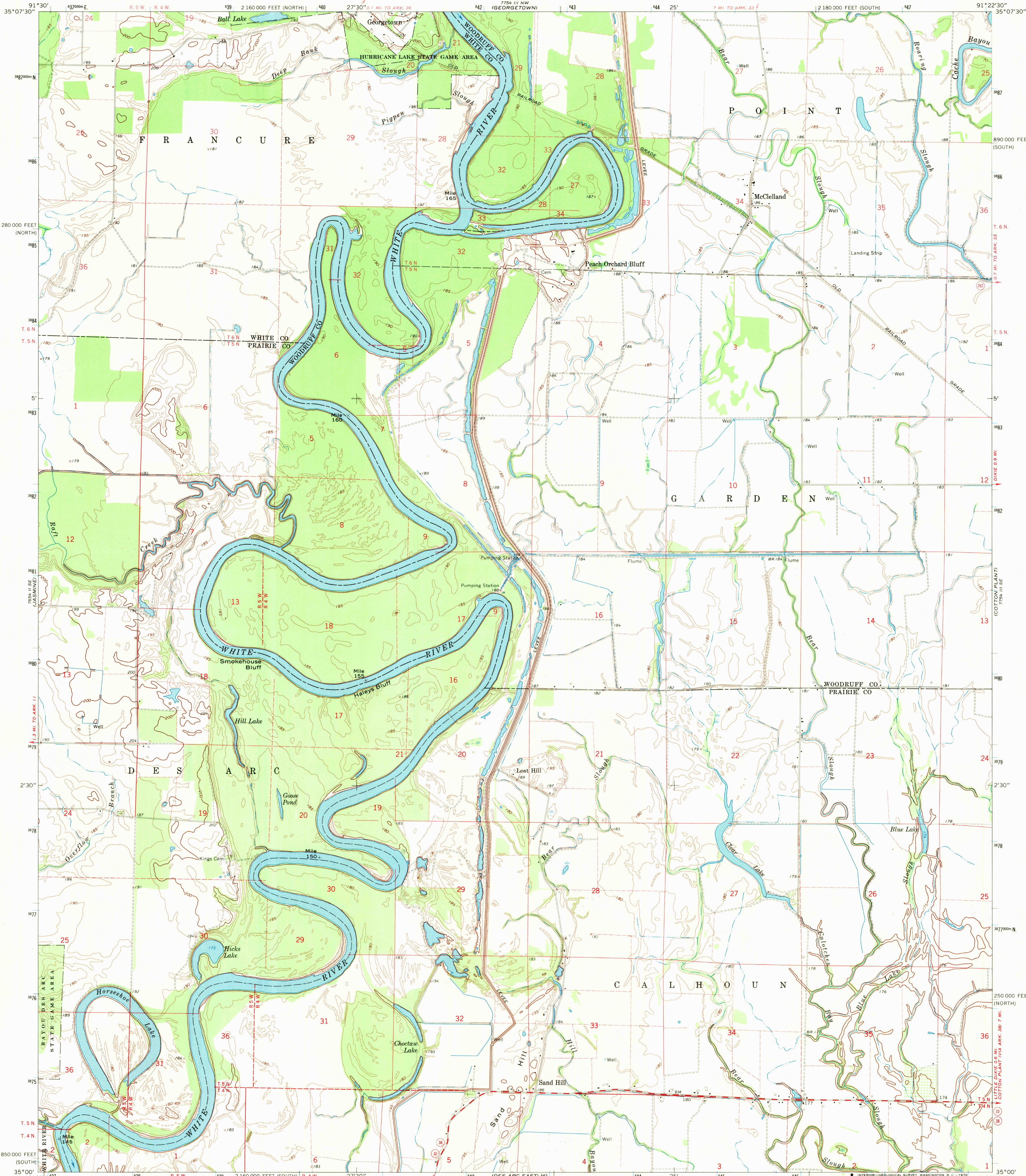
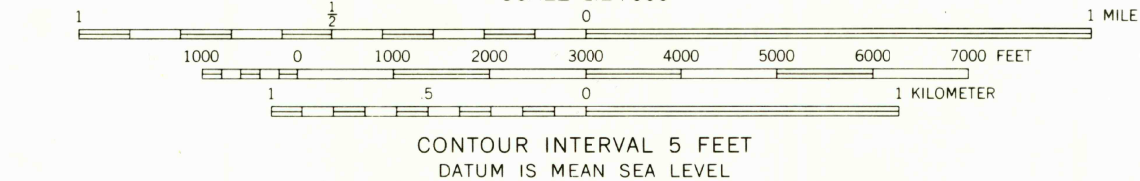
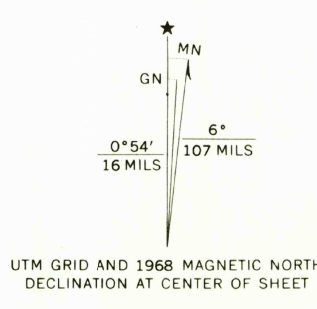


UNITED STATES
DEPARTMENT OF THE INTERIOR
GEOLOGICAL SURVEY

GREGORY SW QUADRANGLE
ARKANSAS
7.5 MINUTE SERIES (TOPOGRAPHIC)
SW/4 GREGORY 15' QUADRANGLE



Mapped, edited, and published by the Geological Survey
Control by USGS and USC&GS
Topography by photogrammetric methods from aerial
photographs taken 1966. Field checked 1967-68
Polyconic projection. 1927 North American datum
10,000-foot grids based on Arkansas coordinate system,
south and north zones
1000-meter Universal Transverse Mercator grid ticks,
zone 15, shown in blue
Fine red dashed lines indicate selected fence and field lines where
generally visible on aerial photographs. This information is unchecked



USGS
Historical File
Topographic Division



ROAD CLASSIFICATION
Medium-duty — Light-duty
Unimproved dirt
State Route

U.S.G.S.
TOPOGRAPHIC DIVISION
GREGORY SW, ARK.
SW/4 GREGORY 15' QUADRANGLE
N3500-W9122.5/7.5
1968
AMS 7754 III SW-SERIES V884

THIS MAP COMPLIES WITH NATIONAL MAP ACCURACY STANDARDS
FOR SALE BY U.S. GEOLOGICAL SURVEY, DENVER, COLORADO 80225, OR WASHINGTON, D. C. 20242
AND BY THE ARKANSAS GEOLOGICAL COMMISSION, LITTLE ROCK, ARKANSAS 72201
A FOLDER DESCRIBING TOPOGRAPHIC MAPS AND SYMBOLS IS AVAILABLE ON REQUEST

2750
AUG 2 1968