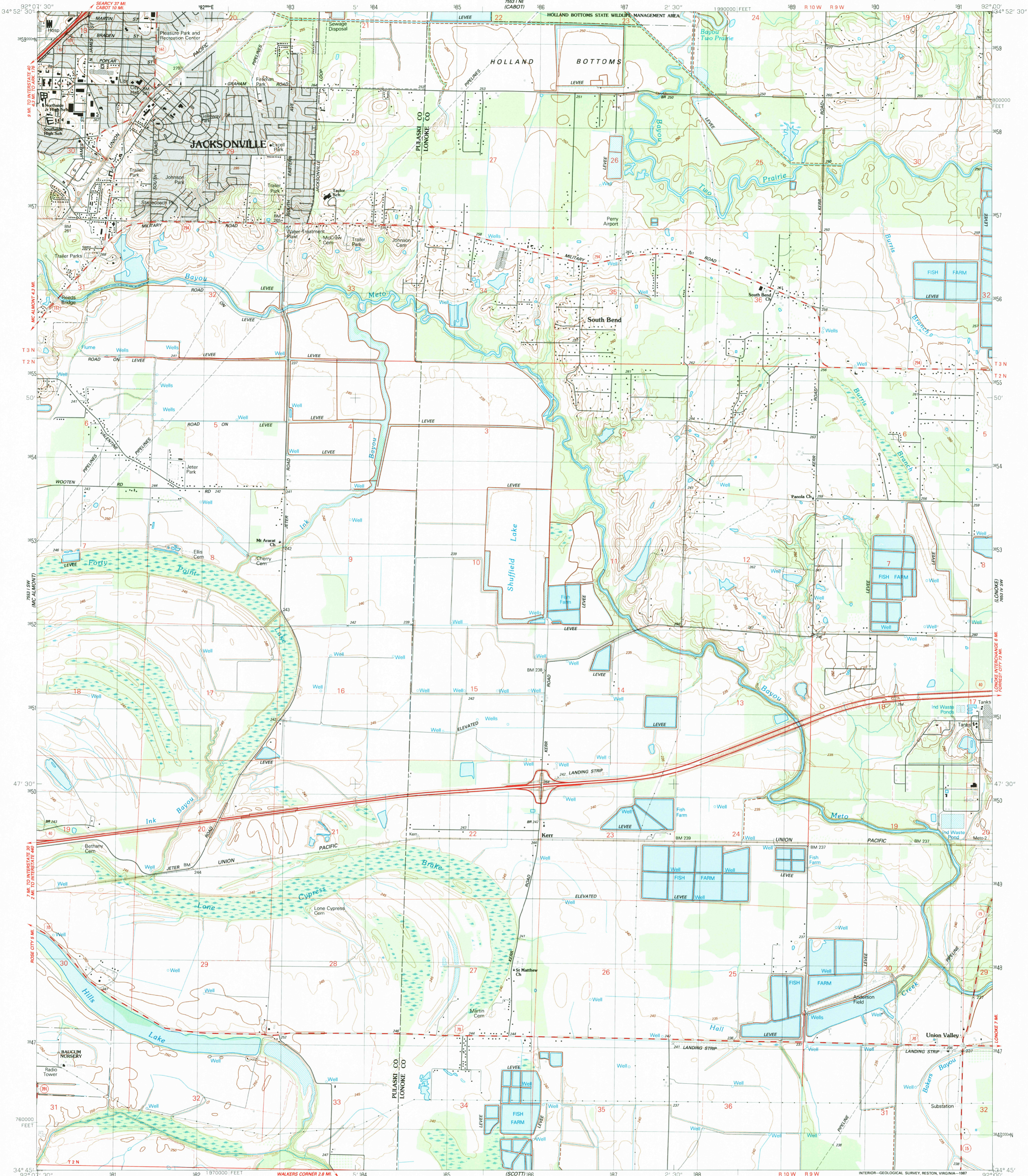


UNITED STATES  
DEPARTMENT OF THE INTERIOR  
GEOLOGICAL SURVEY

JACKSONVILLE QUADRANGLE  
ARKANSAS  
7.5 MINUTE SERIES (TOPOGRAPHIC)



Produced by the United States Geological Survey

Control by USGS and NOS/NOAA

Topography by photogrammetric methods from aerial photographs taken 1984. Field checked 1985. Map edited 1987

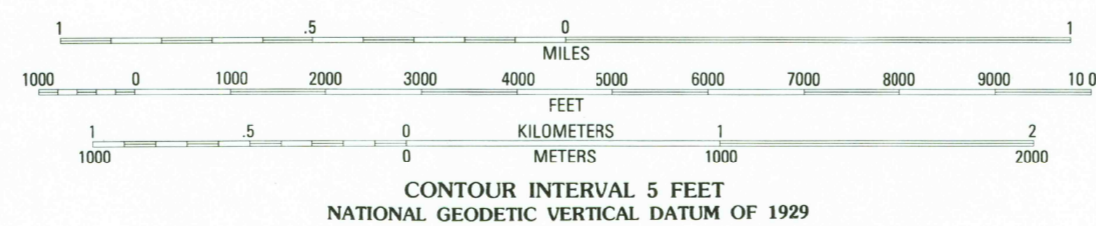
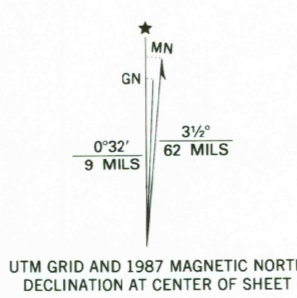
Projection and 10,000-foot grid ticks: Arkansas coordinate system, south zone (Lambert conformal conic)  
1000-meter Universal Transverse Mercator grid, zone 15  
1927 North American Datum

To place on the predicted North American Datum 1983, move the projection lines 7 meters south and 13 meters east as shown by dashed corner ticks

There may be private inholdings within the boundaries of the National or State reservations shown on this map

Gray tint indicates areas in which only landmark buildings are shown

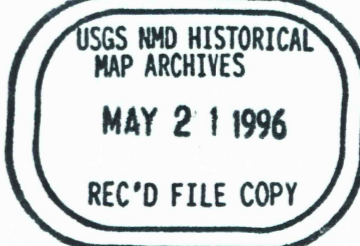
Fine red dashed lines indicate selected fence and field lines where generally visible on aerial photographs. This information is unchecked



THIS MAP COMPLIES WITH NATIONAL MAP ACCURACY STANDARDS  
FOR SALE BY U. S. GEOLOGICAL SURVEY, DENVER, COLORADO 80225, OR RESTON, VIRGINIA 22092  
AND ARKANSAS GEOLOGICAL COMMISSION, LITTLE ROCK, ARKANSAS 72204  
A FOLDER DESCRIBING TOPOGRAPHIC MAPS AND SYMBOLS IS AVAILABLE ON REQUEST

ROAD CLASSIFICATION

- Primary highway, hard surface
- Secondary highway, hard surface
- Interstate Route
- U. S. Route
- State Route
- Light-duty road, hard or improved surface
- Unimproved road



JACKSONVILLE, ARK.

34092-G1-TF-024

1987

DMA 7553 1 SE-SERIES V884

