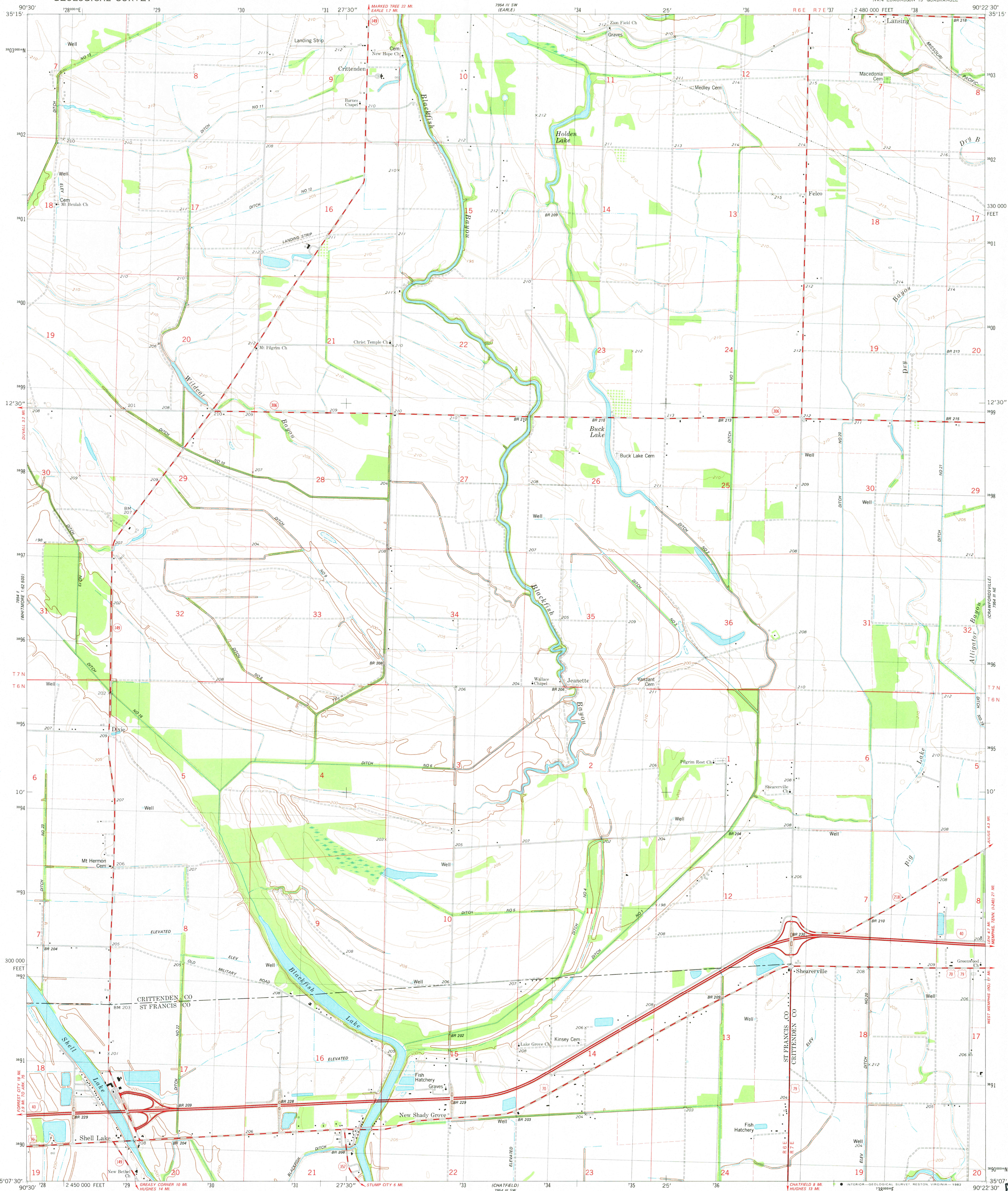


UNITED STATES  
DEPARTMENT OF THE INTERIOR  
GEOLOGICAL SURVEY

JEANETTE QUADRANGLE  
ARKANSAS  
7.5 MINUTE SERIES (TOPOGRAPHIC)  
NW/4 EDMONDSON 15' QUADRANGLE



Mapped, edited, and published by the Geological Survey

Control by USGS, NOS/NOAA, and USCE

Topography by photogrammetric methods from aerial photographs

taken 1975-76. Field checked 1977. Map edited 1981

Projection and 10,000-foot grid ticks: Arkansas coordinate

system, north zone (Lambert conformal conic)

1000-meter Universal Transverse Mercator grid, zone 15

1927 North American Datum

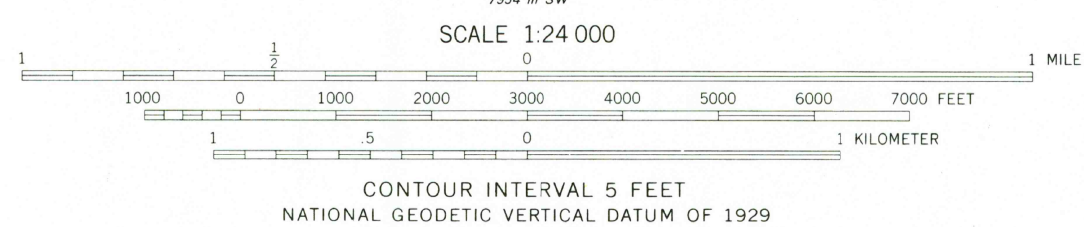
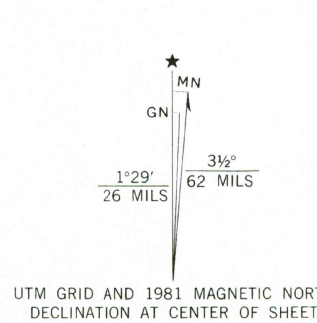
To place on the predicted North American Datum 1983

move the projection lines 7 meters south and

9 meters east as shown by dashed corner ticks

Fine red dashed lines indicate selected fence and field lines where

generally visible on aerial photographs. This information is unchecked



ROAD CLASSIFICATION	
Primary highway, hard surface	Light-duty road, hard or improved surface
Secondary highway, hard surface	Unimproved road
Interstate Route	U.S. Route
	State Route

JEANETTE, ARK.  
NW/4 EDMONDSON 15' QUADRANGLE  
N3507.5-W9022.5/7.5

1981

DMA 7954 III NW-SERIES V884

AUG 03 1982