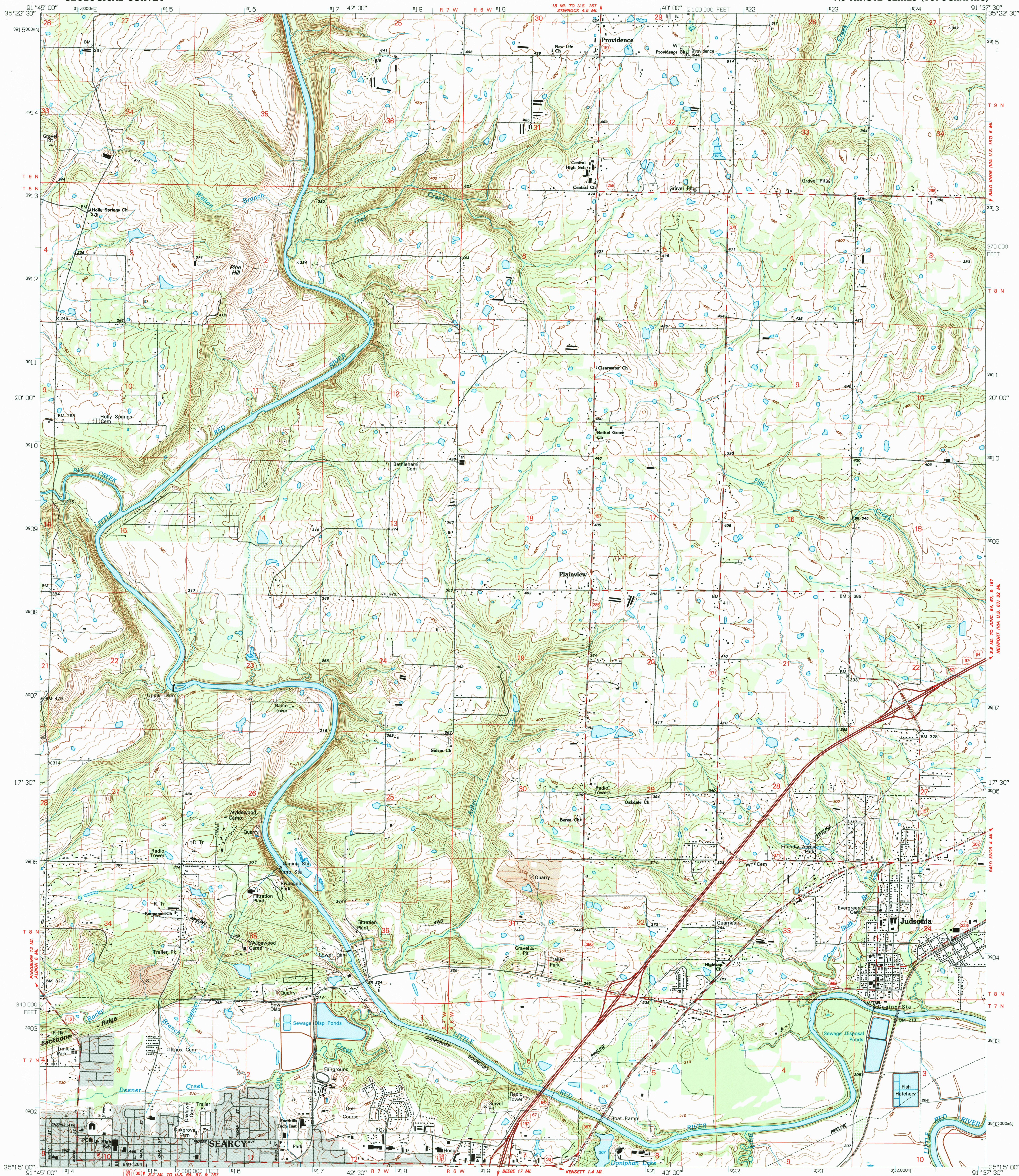


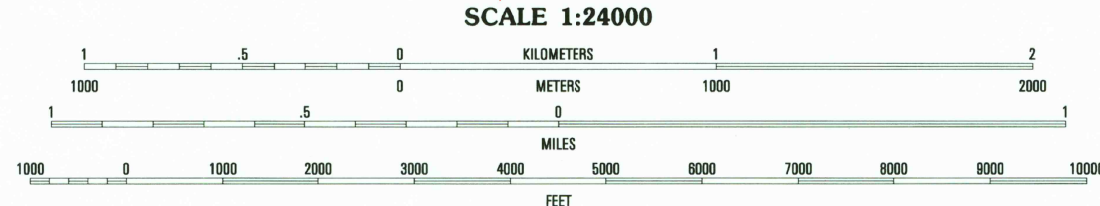
UNITED STATES
DEPARTMENT OF THE INTERIOR
GEOLOGICAL SURVEY

JUDSONIA QUADRANGLE
ARKANSAS-WHITE CO.
7.5 MINUTE SERIES (TOPOGRAPHIC)



Produced by the United States Geological Survey
Control by USGS and NOS/NOAA
Topography by photogrammetric methods from aerial photographs taken 1963. Field checked 1965. Revised from aerial photographs taken 1990. Field checked 1992. Map edited 1994
Universal Transverse Mercator projection
10,000-foot grid: Arkansas coordinate system, north zone
1000-meter Universal Transverse Mercator grid ticks, zone 15, shown in blue
1927 North American Datum (NAD 27)
North American Datum of 1983 (NAD 83) is shown by dashed corner ticks
The values of the shift between NAD 27 and NAD 83 for 7.5-minute intersections are given in USGS Bulletin 1875
Gray tint indicates areas in which only landmark buildings are shown
Fine red dashed lines indicate selected fence and field lines where generally visible on aerial photographs. This information is unchecked

UTM GRID AND 1994 MAGNETIC NORTH
DECLINATION AT CENTER OF SHEET



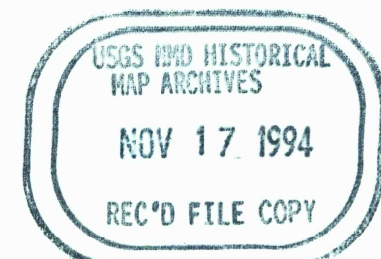
CONTOUR INTERVAL 10 FEET
SUPPLEMENTARY CONTOUR INTERVAL 5 FEET
NATIONAL GEODETIC VERTICAL DATUM OF 1929

THIS MAP COMPLIES WITH NATIONAL MAP ACCURACY STANDARDS
FOR SALE BY U.S. GEOLOGICAL SURVEY, DENVER, COLORADO 80225, OR RESTON, VIRGINIA 22092
AND ARKANSAS GEOLOGICAL COMMISSION, LITTLE ROCK, ARKANSAS 72204
A FOLDER DESCRIBING TOPOGRAPHIC MAPS AND SYMBOLS IS AVAILABLE ON REQUEST



1	2	3	1 Pangborn
4	5	5 Bald Knob	2 Steprock
6	7	7 Kennett	3 Valley Ridge
		8 West Point	4 Letona

ROAD CLASSIFICATION
Primary highway
hard surface
Secondary highway
hard surface
Interstate Route
U.S. Route
State Route
Light-duty road, hard or
improved surface
Unimproved road



JUDSONIA, ARK.
35091-C6-TF-024
1994

DMA 7654 1 SW - SERIES V884