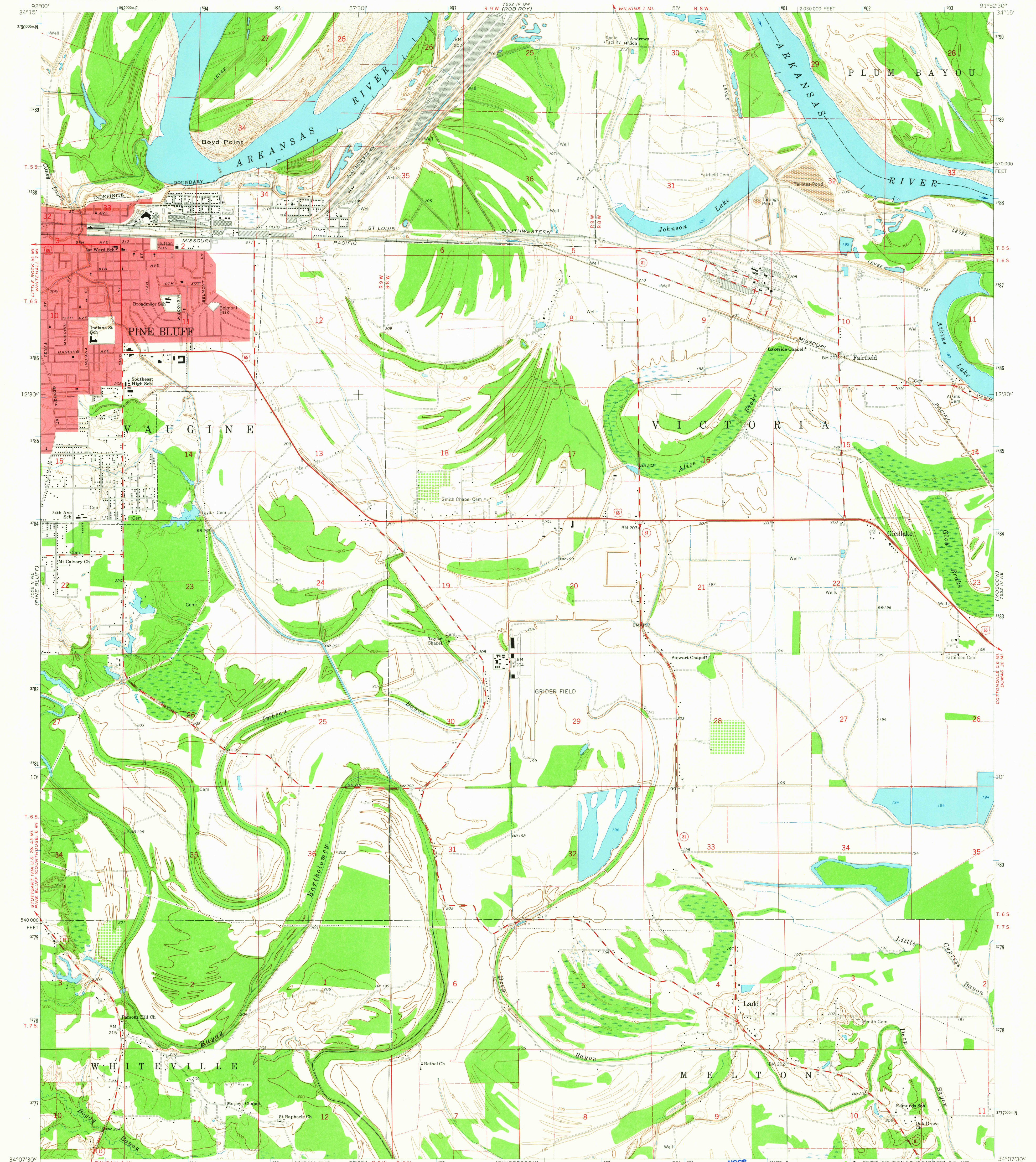


7552 III SW  
(PINE BLUFF)  
1:250,000

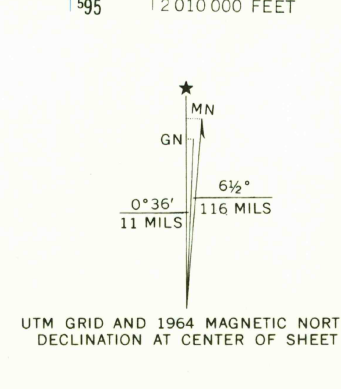
UNITED STATES  
DEPARTMENT OF THE INTERIOR  
GEOLOGICAL SURVEY

LADD QUADRANGLE  
ARKANSAS-JEFFERSON CO.  
7.5 MINUTE SERIES (TOPOGRAPHIC)  
NW/4 NOBLE LAKE 15' QUADRANGLE

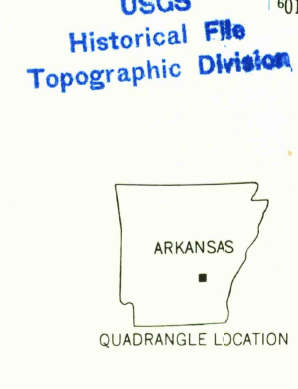
7552 IV SE  
(LITTLE ROCK)  
1:250,000



Mapped, edited, and published by the Geological Survey  
Control by USGS, USC&GS, and Arkansas Geodetic Survey  
Planimetry by photogrammetric methods from aerial photographs  
taken 1962. Topography by planetable surveys 1964  
Polyconic projection. 1927 North American datum  
10,000-foot grid based on Arkansas coordinate system, south zone  
1000-meter Universal Transverse Mercator grid ticks,  
zone 15, shown in blue  
Red tint indicates area in which only landmark buildings are shown  
Fine red dashed lines indicate selected fence and field lines where  
generally visible on aerial photographs. This information is unchecked



SCALE 1:24,000  
CONTOUR INTERVAL 5 FEET  
DATUM IS MEAN SEA LEVEL  
FOR SALE BY U. S. GEOLOGICAL SURVEY, DENVER 25, COLORADO OR WASHINGTON 25, D. C.  
AND BY THE ARKANSAS GEOLOGICAL COMMISSION, LITTLE ROCK, ARKANSAS  
A FOLDER DESCRIBING TOPOGRAPHIC MAPS AND SYMBOLS IS AVAILABLE ON REQUEST



ROAD CLASSIFICATION  
Heavy-duty ——— Light-duty ———  
Medium-duty ——— Unimproved dirt ———  
U.S. Route ——— State Route ———  
LADD, ARK. APR 2 6 1965  
NW/4 NOBLE LAKE 15' QUADRANGLE  
N3407.5—W9152.5/7.5  
1964  
AMS 7552 III NW—SERIES V884