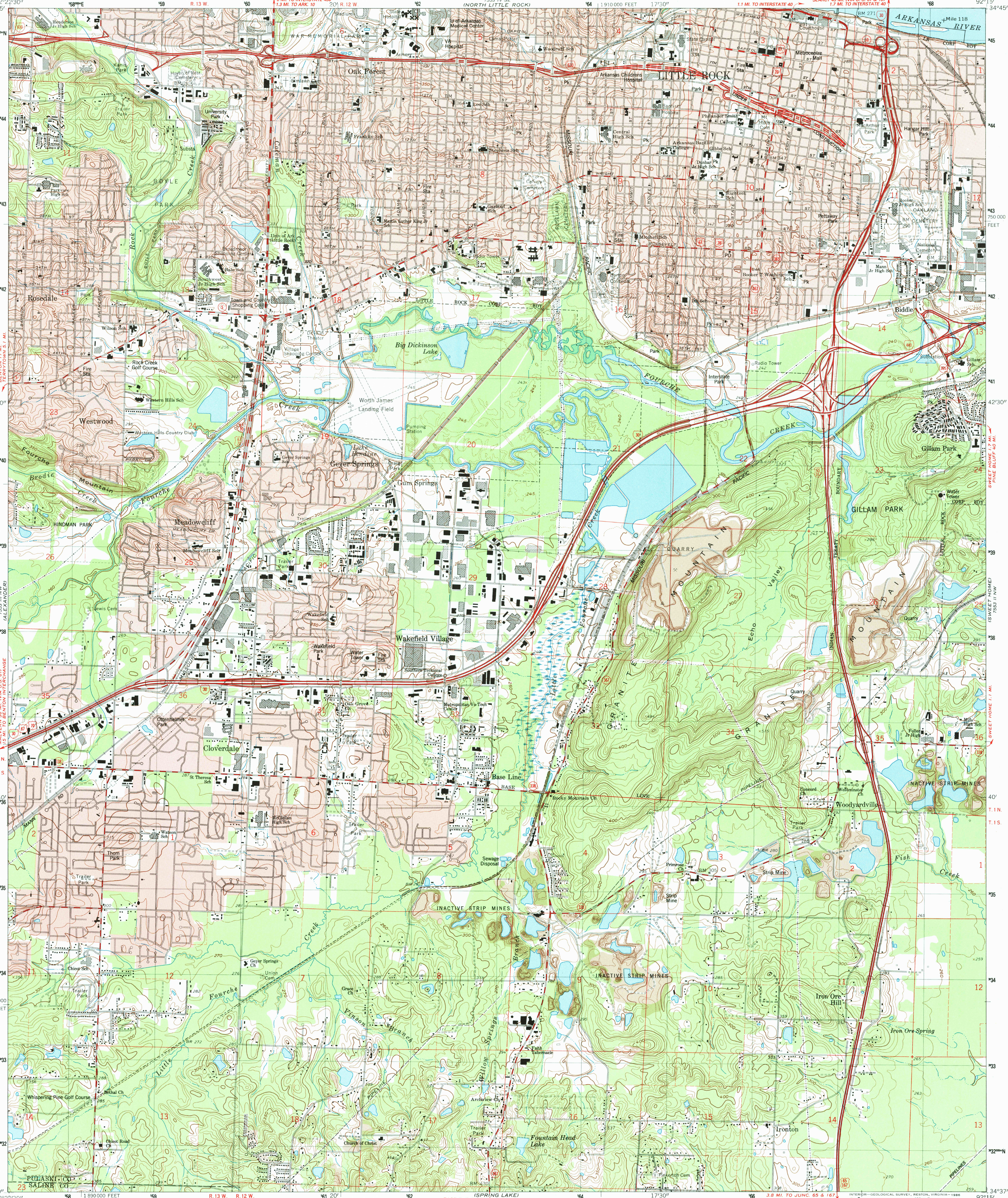
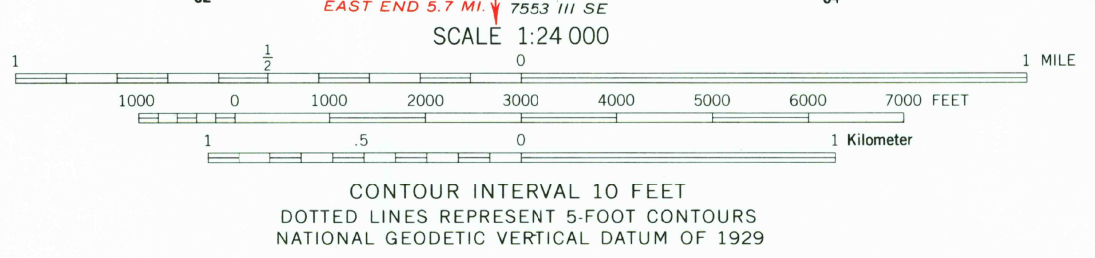
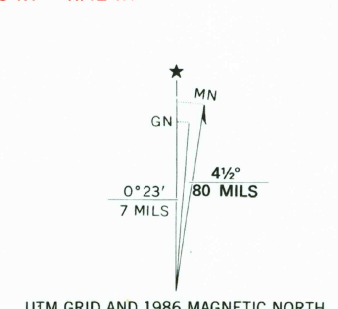


UNITED STATES
DEPARTMENT OF THE INTERIOR
GEOLOGICAL SURVEY

LITTLE ROCK QUADRANGLE
ARKANSAS
7.5 MINUTE SERIES (TOPOGRAPHIC)



Mapped, edited, and published by the Geological Survey
Control by USGS and NOS/NOAA
Topography by photogrammetric methods from aerial photographs taken 1960. Revised from aerial photographs taken 1984. Field checked 1985. Map edited 1986
Projection and 10,000-foot grid ticks: Arkansas coordinate system, south zone (Lambert conformal conic)
1000-meter Universal Transverse Mercator grid, zone 15
1927 North American Datum
To place on the predicted North American Datum 1983, move the projection lines 7 meters south and 14 meters east as shown by dashed corner ticks
Red tint indicates areas in which only landmark buildings are shown
Fine red dashed lines indicate selected fence and field lines where generally visible on aerial photographs. This information is unchecked



ROAD CLASSIFICATION

Heavy-duty	Light-duty
Medium-duty	Unimproved dirt

Interstate Route U.S. Route State Route

QUADRANGLE LOCATION

AR 11 1986

LITTLE ROCK, ARK.
34092-F3-TF-024
1986
DMA 7553 III NE-SERIES V884