

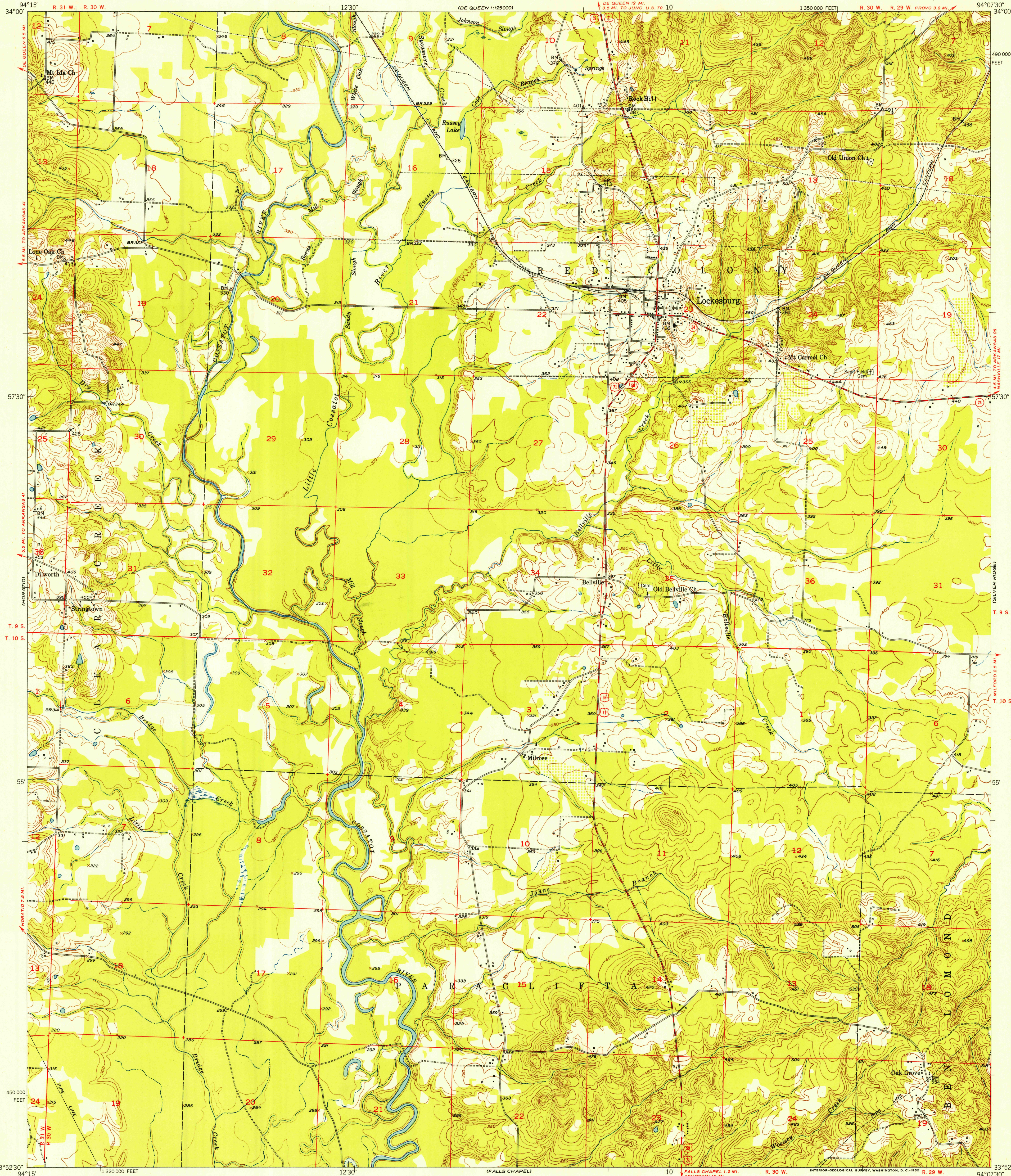
OF QUEEN
1:125000

UNITED STATES
DEPARTMENT OF THE INTERIOR
GEOLOGICAL SURVEY

U. S. G. S.
FILE COPY
Inspection and Editing

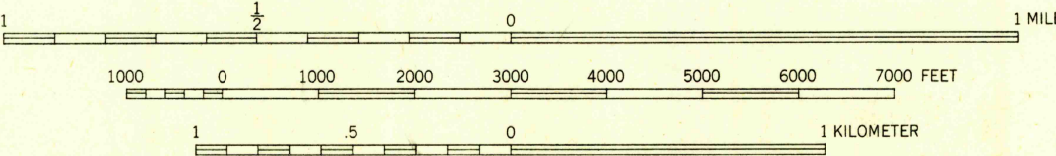
LOCKESBURG QUADRANGLE
ARKANSAS-SEVIER CO.
7.5 MINUTE SERIES (TOPOGRAPHIC)

OF QUEEN
1:125000



Mapped, edited, and published by the Geological Survey
Control by USGS and USC&GS
Culture and drainage in part compiled from aerial photographs
taken 1949. Topography by plane-table methods 1950-1951
Polyconic projection. 1927 North American datum
10,000-foot grid based on Arkansas coordinate system,
south zone

TRUE NORTH
MAGNETIC NORTH
APPROXIMATE MEAN
DECLINATION, 1951



CONTOUR INTERVAL 10 FEET
DOTTED LINES REPRESENT HALF-INTERVAL CONTOURS
DATUM IS MEAN SEA LEVEL

THIS MAP COMPLIES WITH NATIONAL MAP ACCURACY STANDARDS
FOR SALE BY U. S. GEOLOGICAL SURVEY, FEDERAL CENTER, DENVER, COLORADO OR WASHINGTON 25, D. C.
AND BY THE ARKANSAS RESOURCES AND DEVELOPMENT COMMISSION, LITTLE ROCK, ARKANSAS
A FOLDER DESCRIBING TOPOGRAPHIC MAPS AND SYMBOLS IS AVAILABLE ON REQUEST

USGS
Historical File
Topographic Division

U. S. G. S.
FILE COPY
Inspection and Editing

ROAD CLASSIFICATION
Heavy-duty ——— 2 LANE 16 LANE Light-duty ———
Medium-duty ——— 2 LANE 16 LANE Unimproved dirt ———
U. S. Route ——— State Route ———

LOCKESBURG, ARK.
N352.5-W9407.5/7.5

1951
AUG 4 1952 2490