

7453 I NW
(PARON SW)

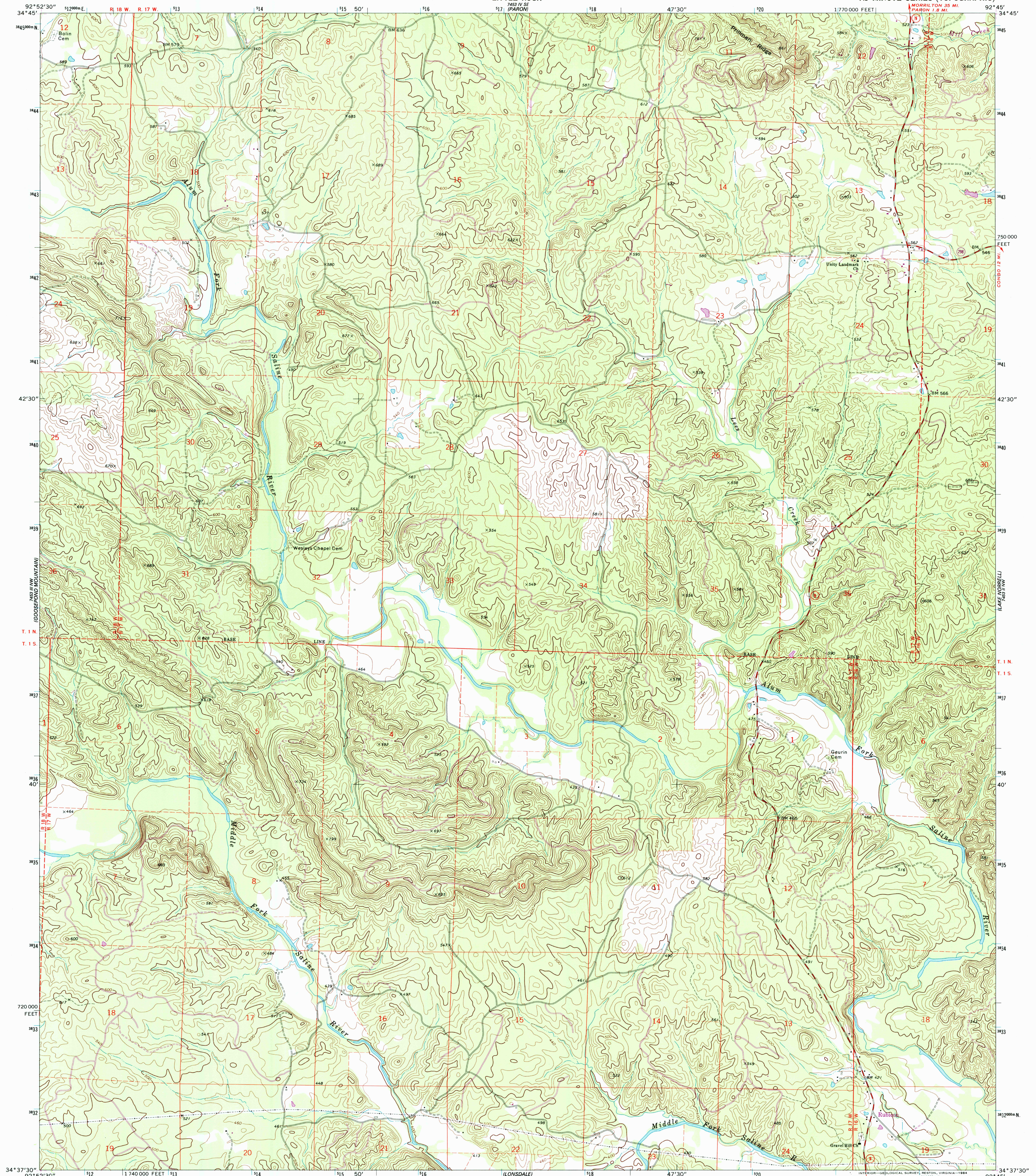


U.S. DEPARTMENT OF THE INTERIOR
U.S. GEOLOGICAL SURVEY

STATE OF ARKANSAS
GEOLOGICAL COMMISSION
LITTLE ROCK

LONSDALE NE QUADRANGLE
ARKANSAS—SALINE CO.
7.5 MINUTE SERIES (TOPOGRAPHIC)

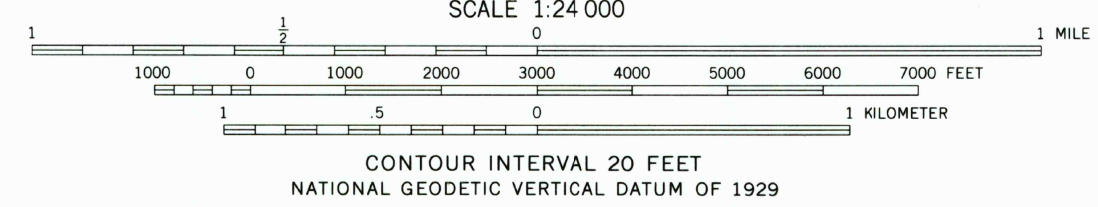
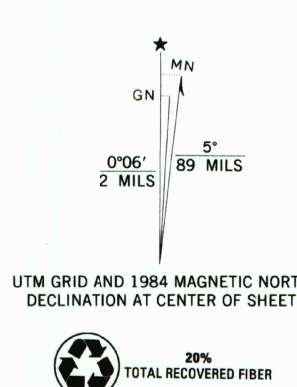
7453 I NW
(FOURCH SW)



(FOURCH LAKE)
7453 III SW

(WASSELL)
7453 I SE

Mapped, edited, and published by the Geological Survey
Control by USGS and USC&GS
Topography by photogrammetric methods from aerial photographs taken 1968 and 1972. Field checked 1972
Projection and 10,000-foot grid ticks: Arkansas coordinate system, south zone (Lambert conformal conic)
1000-meter Universal Transverse Mercator grid ticks, zone 15, shown in blue. 1927 North American datum
Fine red dashed lines indicate selected fence and field lines where generally visible on aerial photographs. This information is unchecked
To place on the predicted North American Datum 1983, move the projection lines 7 meters south and 15 meters east as shown by dashed corner ticks
Revisions shown in purple from aerial photographs taken 1982 and other sources. This information not field checked. Map edited 1984



RECEIVED
JUL 3 1 2002
USGS NWL
HISTORICAL MAP ARCHIVES

LONSDALE NE, ARK.
34092-F7-TF-024
1972
PHOTOREVISED 1984
DMA 7453 III NE—SERIES V884

ROAD CLASSIFICATION
Primary highway, hard surface
Secondary highway, hard surface
Interstate Route
U. S. Route
State Route
Light-duty road, hard or improved surface
Unimproved road

