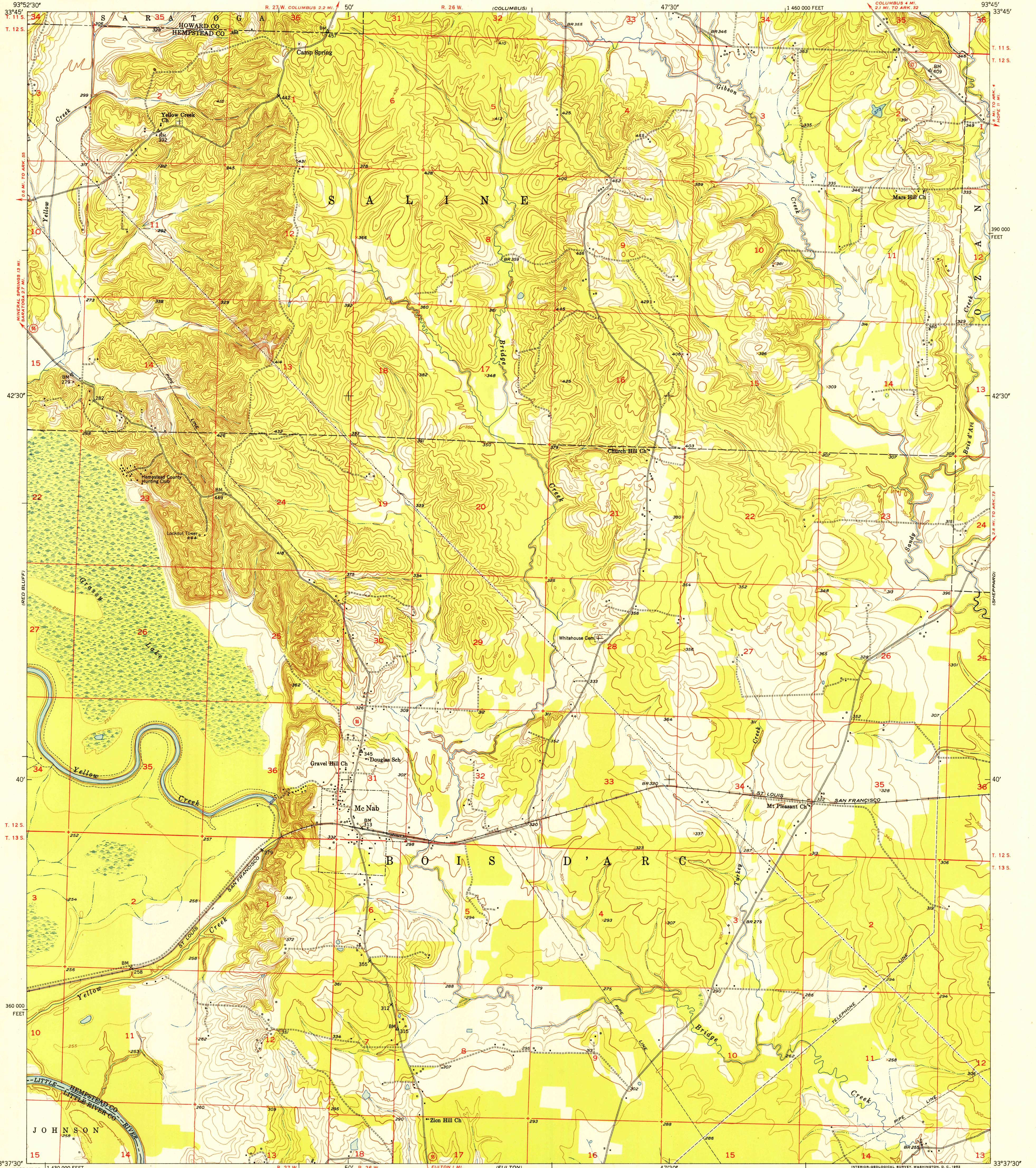


UNITED STATES  
DEPARTMENT OF THE INTERIOR  
GEOLOGICAL SURVEY

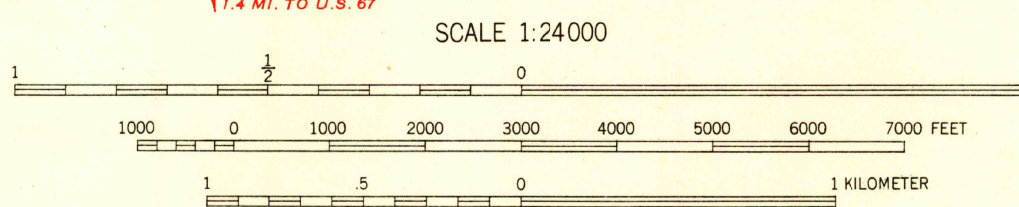
U. S. G. S.  
FILE COPY  
Inspection and Editing

MC NAB QUADRANGLE  
ARKANSAS  
7.5 MINUTE SERIES (TOPOGRAPHIC)



Mapped, edited, and published by the Geological Survey  
Control by USGS and USC&GS  
Culture and drainage in part compiled from aerial photographs  
taken 1949. Topography by plane-table surveys 1951.  
Polyconic projection. 1927 North American datum.  
10,000-foot grid based on Arkansas coordinate system,  
south zone

TRUE NORTH  
MAGNETIC NORTH  
APPROXIMATE MEAN  
DECLINATION, 1951



CONTOUR INTERVAL 10 FEET  
DOTTED LINES REPRESENT HALF-INTERVAL CONTOURS  
DATUM IS MEAN SEA LEVEL

THIS MAP COMPLIES WITH NATIONAL MAP ACCURACY STANDARDS  
FOR SALE BY U. S. GEOLOGICAL SURVEY, FEDERAL CENTER, DENVER, COLORADO OR WASHINGTON 25, D. C.  
AND BY THE ARKANSAS RESOURCES AND DEVELOPMENT COMMISSION, LITTLE ROCK, ARKANSAS  
A FOLDER DESCRIBING TOPOGRAPHIC MAPS AND SYMBOLS IS AVAILABLE ON REQUEST

USGS  
Historical File  
Topographic Division

ROAD CLASSIFICATION  
Heavy-duty 4 LANE 16 LANE Light-duty 4 LANE 16 LANE  
Medium-duty 4 LANE 16 LANE Unimproved dirt   
 U. S. Route State Route

U. S. G. S.  
FILE COPY  
Inspection and Editing

MC NAB, ARK.  
N3337.5-W9345/7.5  
1951

SEP 22 1952