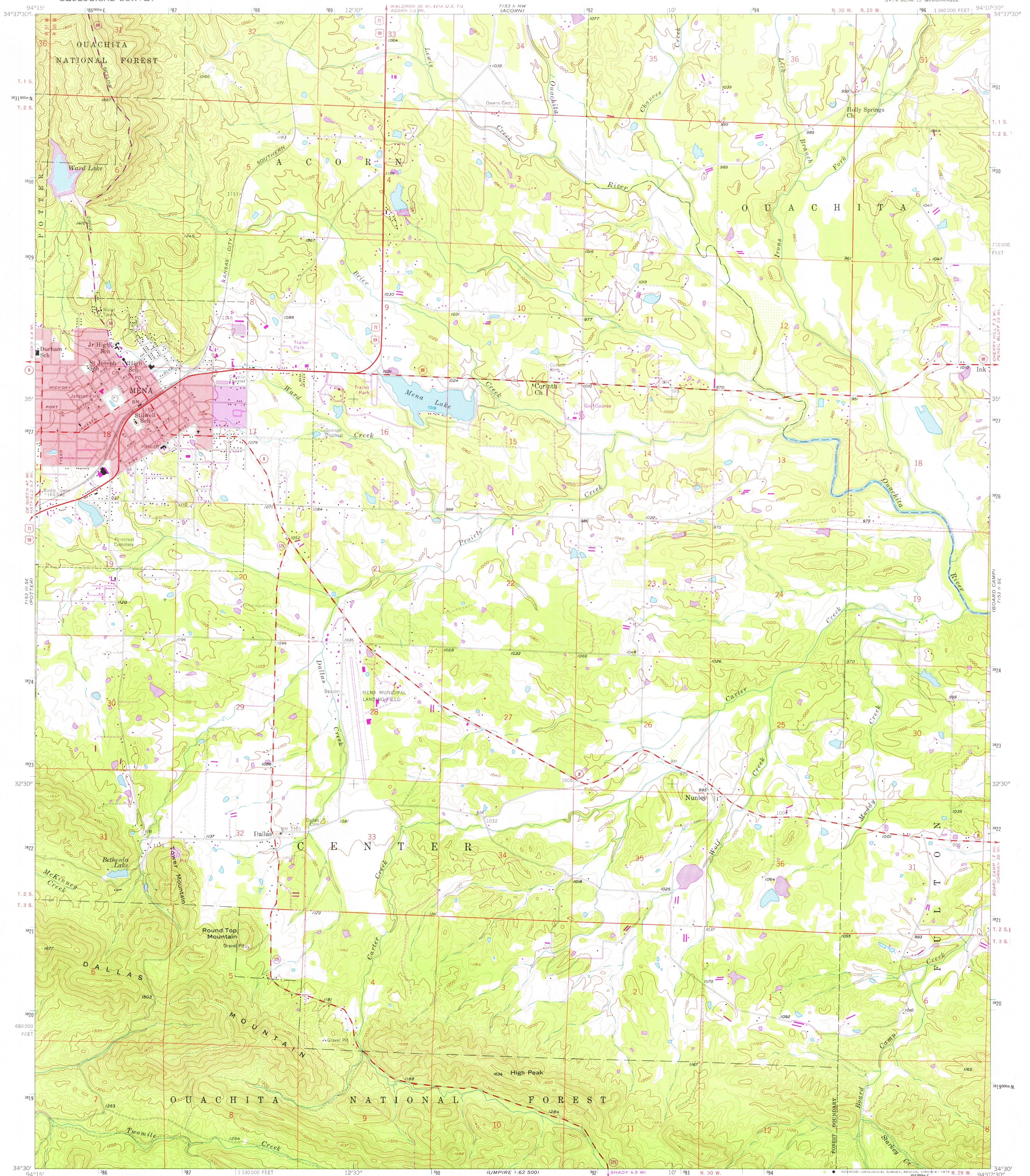
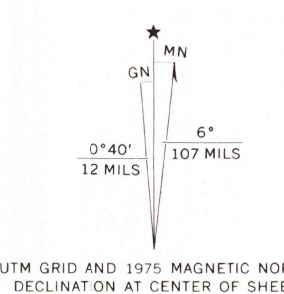


UNITED STATES
DEPARTMENT OF THE INTERIOR
GEOLOGICAL SURVEY

MENA QUADRANGLE
ARKANSAS—POLK CO.
7.5 MINUTE SERIES (TOPOGRAPHIC)
SW 1/4 MENA 15' QUADRANGLE



Mapped, edited, and published by the Geological Survey
Control by USGS and USC&GS
Topography from aerial photographs by multiplex methods
Aerial photographs taken 1955. Field check 1958
Polyconic projection. 1927 North American datum
10,000-foot grid based on Arkansas coordinate system, south zone
1000-metre Universal Transverse Mercator grid ticks,
zone 15, shown in blue
Red tint indicates area in which only
landmark buildings are shown
Unchecked elevations are shown in brown



SCALE 1:24 000
CONTOUR INTERVAL 20 FEET
NATIONAL GEODETIC VERTICAL DATUM OF 1929
THIS MAP COMPLIES WITH NATIONAL MAP ACCURACY STANDARDS
FOR SALE BY U. S. GEOLOGICAL SURVEY, DENVER, COLORADO 80225, OR RESTON, VIRGINIA 22092
AND ARKANSAS GEOLOGICAL COMMISSION, LITTLE ROCK, ARKANSAS 72204
A FOLDER DESCRIBING TOPOGRAPHIC MAPS AND SYMBOLS IS AVAILABLE ON REQUEST

Revisions shown in purple compiled from aerial photographs
taken 1975. This information not field checked
Purple tint indicates extensions of urban areas

ROAD CLASSIFICATION
Heavy-duty ——— Light-duty ———
Medium-duty ——— Unimproved dirt ———
U. S. Route ——— State Route ———



MENA, ARK.
SW 1/4 MENA 15' QUADRANGLE
N3430—W9407.5/7.5

USGS
Historical File
Topographic Division

1958
PHOTOREVISED 1975
AMS 7155 II SW—SERIES V884

NOV 23 1976