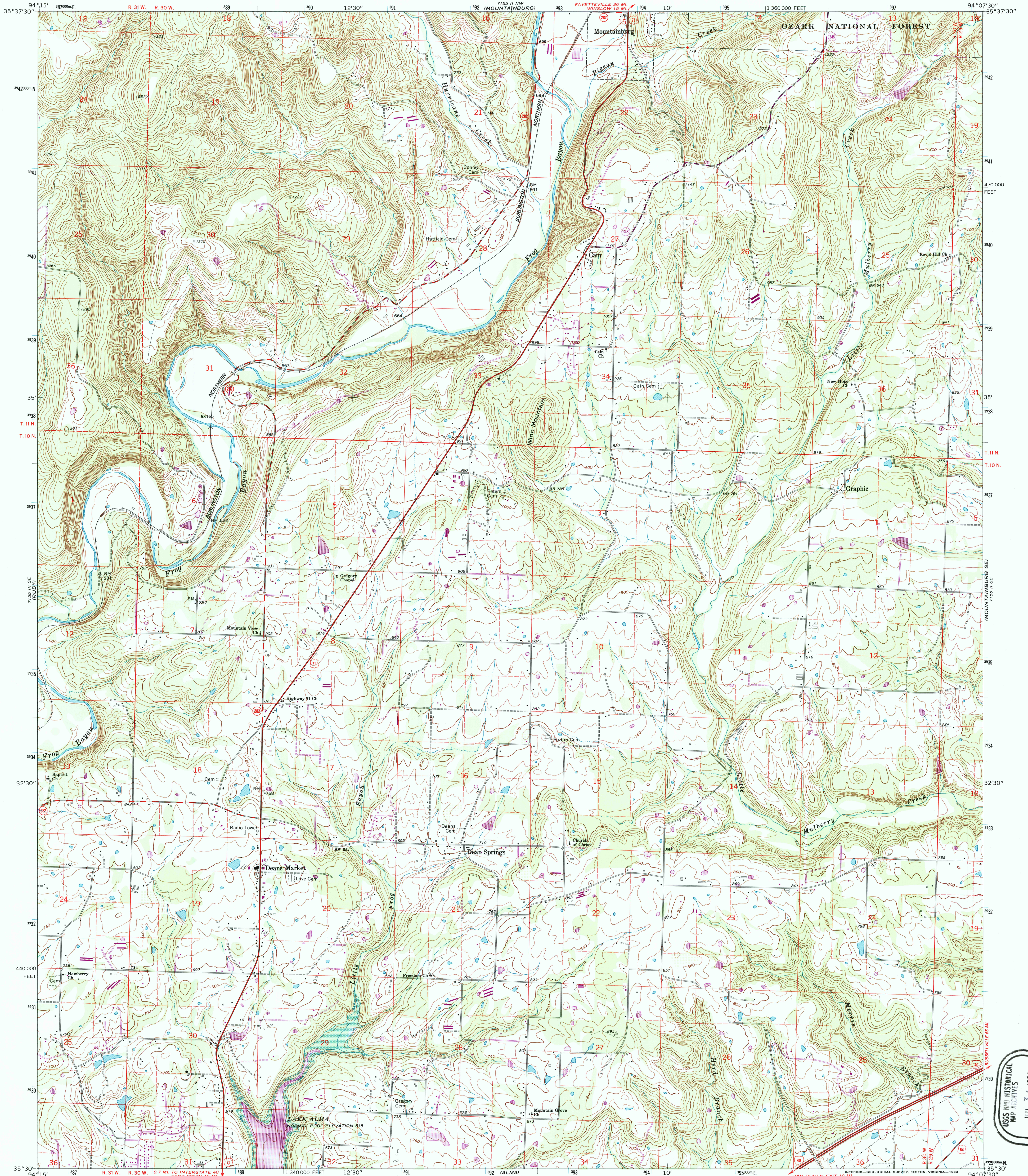


UNITED STATES
DEPARTMENT OF THE INTERIOR
GEOLOGICAL SURVEY

MOUNTAINBURG SW QUADRANGLE
ARKANSAS—CRAWFORD CO.
7.5 MINUTE SERIES (TOPOGRAPHIC)



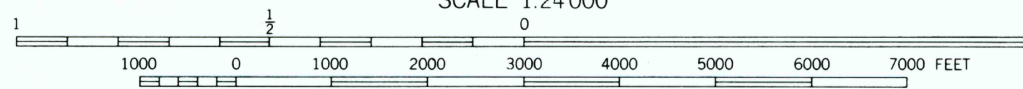
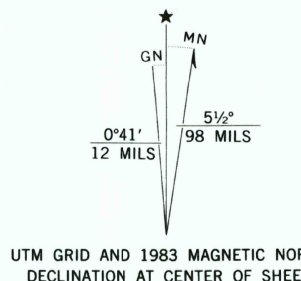
Mapped, edited, and published by the Geological Survey
Control by USGS and USC&GS

Topography by photogrammetric methods from aerial
photographs taken 1967. Field checked 1969
Polyconic projection. 1927 North American datum
10,000-foot grid based on Arkansas coordinate system, north zone
1000-meter Universal Transverse Mercator grid ticks,
zone 15, shown in blue

Blue hatching indicates area to be submerged by Lake Alma
Area covered by dashed light-blue pattern
is subject to controlled inundation
There may be private inholdings within the boundaries of
the National or State reservations shown on this map

Revisions shown in purple and woodland compiled in cooperation with
U. S. Forest Service from aerial photographs taken 1980-81 and other sources
Partially field checked by U. S. Forest Service. Map edited 1983

To place on the predicted North American Datum 1983
move the projection lines 6 meters south and
18 meters east as shown by dashed corner ticks



CONTOUR INTERVAL 20 FEET
NATIONAL GEODETIC VERTICAL DATUM OF 1929

THIS MAP COMPLIES WITH NATIONAL MAP ACCURACY STANDARDS
FOR SALE BY U. S. GEOLOGICAL SURVEY, DENVER, COLORADO 80225, OR RESTON, VIRGINIA 22092
AND ARKANSAS GEOLOGICAL COMMISSION, LITTLE ROCK, ARKANSAS 72204
A FOLDER DESCRIBING TOPOGRAPHIC MAPS AND SYMBOLS IS AVAILABLE ON REQUEST



ROAD CLASSIFICATION
Primary highway, all weather, hard surface
Secondary highway, all weather, hard surface
Light-duty road, all weather, improved surface
Unimproved road, fair or dry weather
Interstate Route
U. S. Route
State Route

MOUNTAINBURG SW, ARK.
N3530—W9407.5/7.5

JUL 17 1998
PHOTOREVISED 1983
DMA 7155 II SW—SERIES V884

USGS HISTORICAL
MAP ARCHIVES
JUL 31 1998
REC'D FILE COPY

