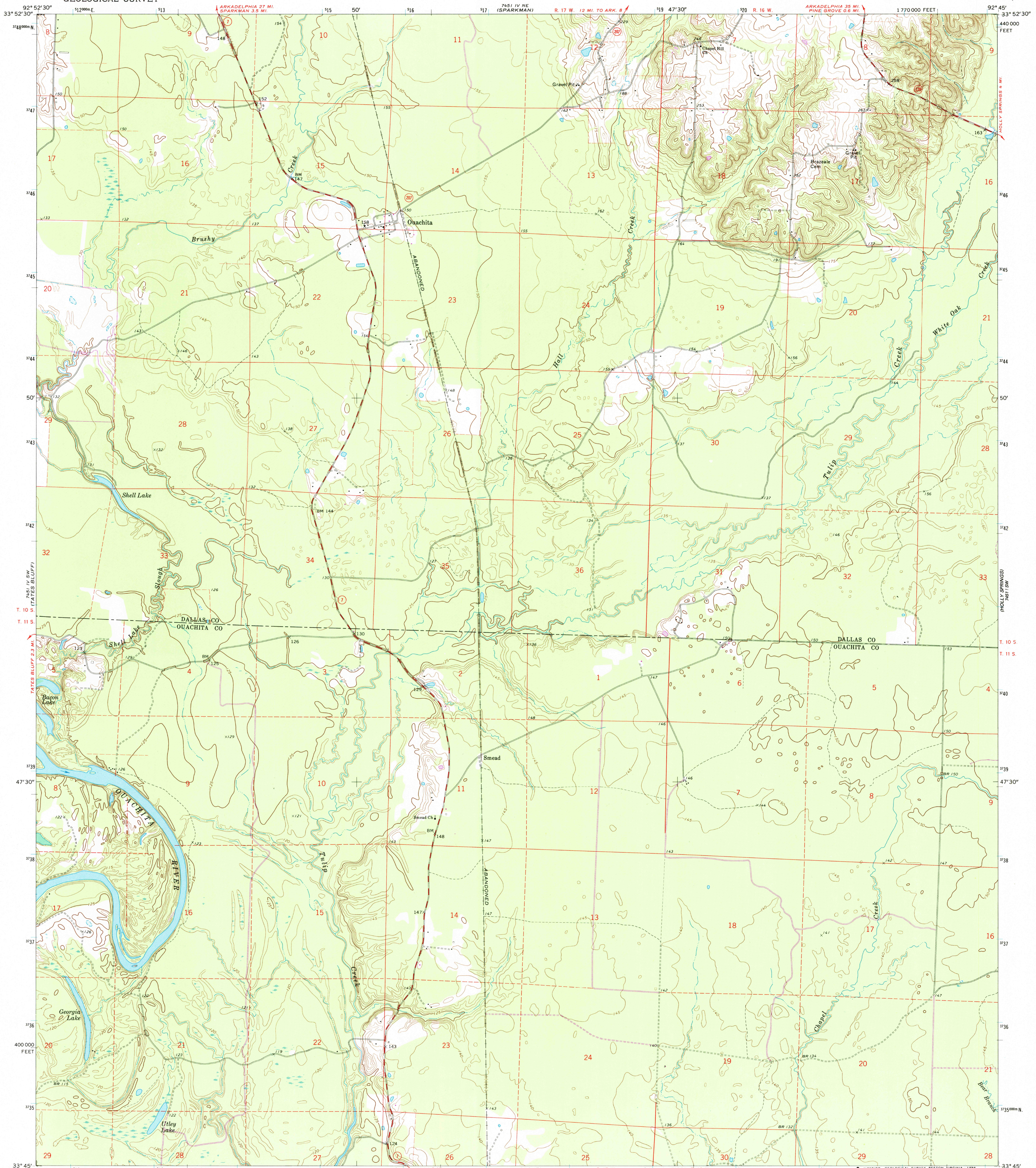
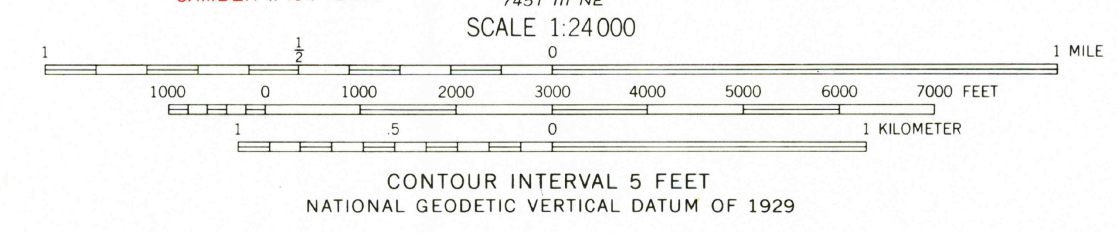
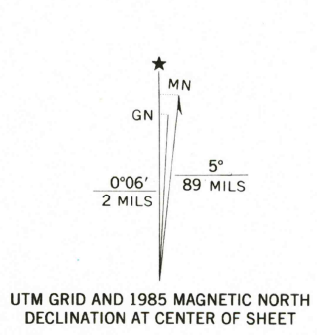


UNITED STATES
DEPARTMENT OF THE INTERIOR
GEOLOGICAL SURVEY

OUACHITA QUADRANGLE
ARKANSAS
7.5 MINUTE SERIES (TOPOGRAPHIC)



Mapped, edited, and published by the Geological Survey
Control by USGS and USC&GS
Topography by photogrammetric methods from aerial
photographs taken 1970. Field checked 1971
Projection and 10,000-foot grid ticks: Arkansas coordinate
system, south zone (Lambert conformal conic)
1000-meter Universal Transverse Mercator grid ticks,
zone 15, shown in blue. 1927 North American datum
Fine red dashed lines indicate selected fence and field lines where
generally visible on aerial photographs. This information is unchecked
To place on the predicted North American Datum 1983,
move the projection lines 9 meters south and
15 meters east as shown by dashed corner ticks
Revisions shown in purple compiled from aerial photographs taken 1984 and
other sources. This information not field checked. Map edited 1985



ROAD CLASSIFICATION

Primary highway, hard surface ——— Light-duty road, hard or improved surface ———
Secondary highway, hard surface ——— Unimproved road ———
U. S. Route ——— State Route ———

USGS NMD HISTORICAL MAP
MAR 28 1986
REC'D FILE COPY

OUACHITA, ARK.
33092-G7-TF-024
1971
PHOTOREVISED 1985
DMA 7451 IV SE-SERIES V884