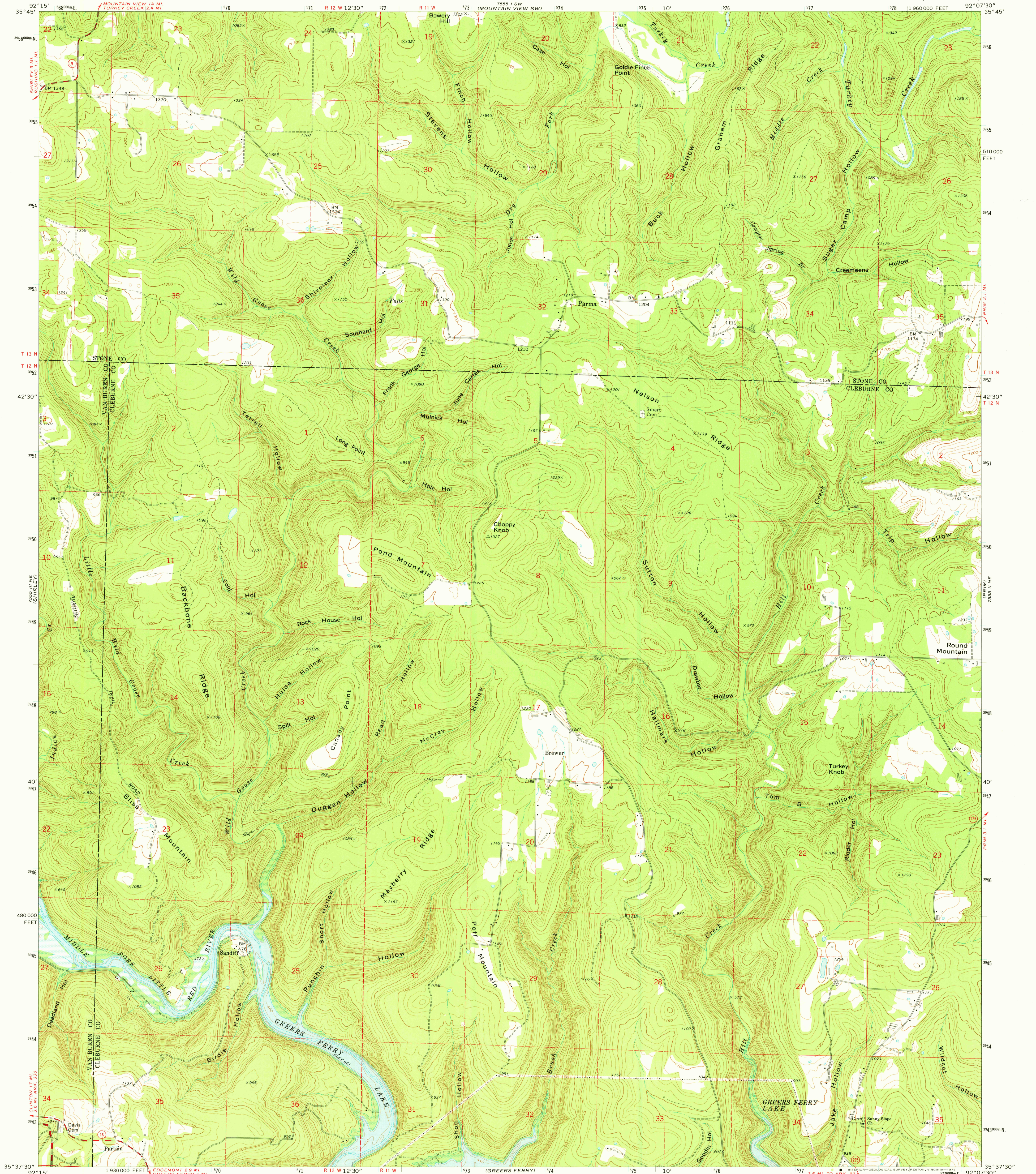
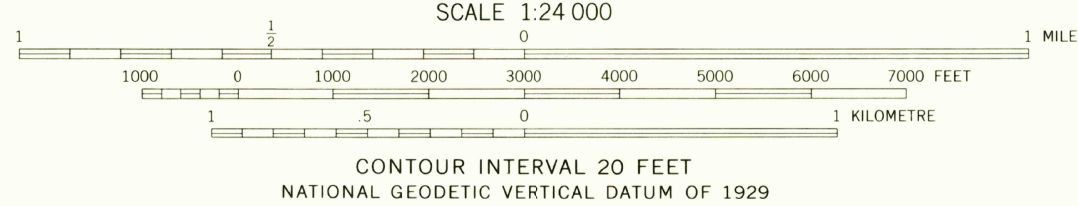
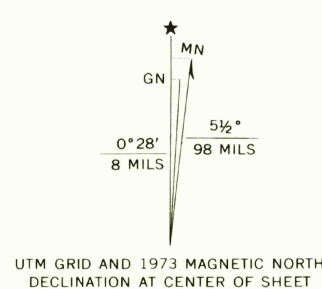


UNITED STATES
DEPARTMENT OF THE INTERIOR
GEOLOGICAL SURVEY

PARMA QUADRANGLE
ARKANSAS
7.5 MINUTE SERIES (TOPOGRAPHIC)



Mapped, edited, and published by the Geological Survey
Control by USGS and NOS/NOAA
Topography by photogrammetric methods from aerial
photographs taken 1972. Field checked 1973
Underwater contours in Greers Ferry Lake from
USCE map dated 1939
Projection and 10,000-foot grid ticks: Arkansas coordinate
system, north zone (Lambert conformal conic)
1000-metre Universal Transverse Mercator grid ticks,
zone 15, shown in blue. 1927 North American datum
Areas covered by dashed light-blue pattern
are subject to controlled inundation
Fine red dashed lines indicate selected fence and field lines where
generally visible on aerial photographs. This information is unchecked



THIS MAP COMPLIES WITH NATIONAL MAP ACCURACY STANDARDS
FOR SALE BY U. S. GEOLOGICAL SURVEY, DENVER, COLORADO 80225, OR RESTON, VIRGINIA 22092
AND BY THE ARKANSAS GEOLOGICAL COMMISSION, LITTLE ROCK, ARKANSAS 72201
A FOLDER DESCRIBING TOPOGRAPHIC MAPS AND SYMBOLS IS AVAILABLE ON REQUEST



ROAD CLASSIFICATION
Primary highway, hard surface
Secondary highway, hard surface
Unimproved road
Interstate Route
U. S. Route
State Route
Light-duty road, hard or improved surface
Unimproved road

USGS
HISTORICAL FILE
TOPOGRAPHIC DIVISION

PARMA, ARK.
N3537.5-W9207.5/7.5
1973
AMS 7555 II NW-SERIES V884

JAN 26 1976