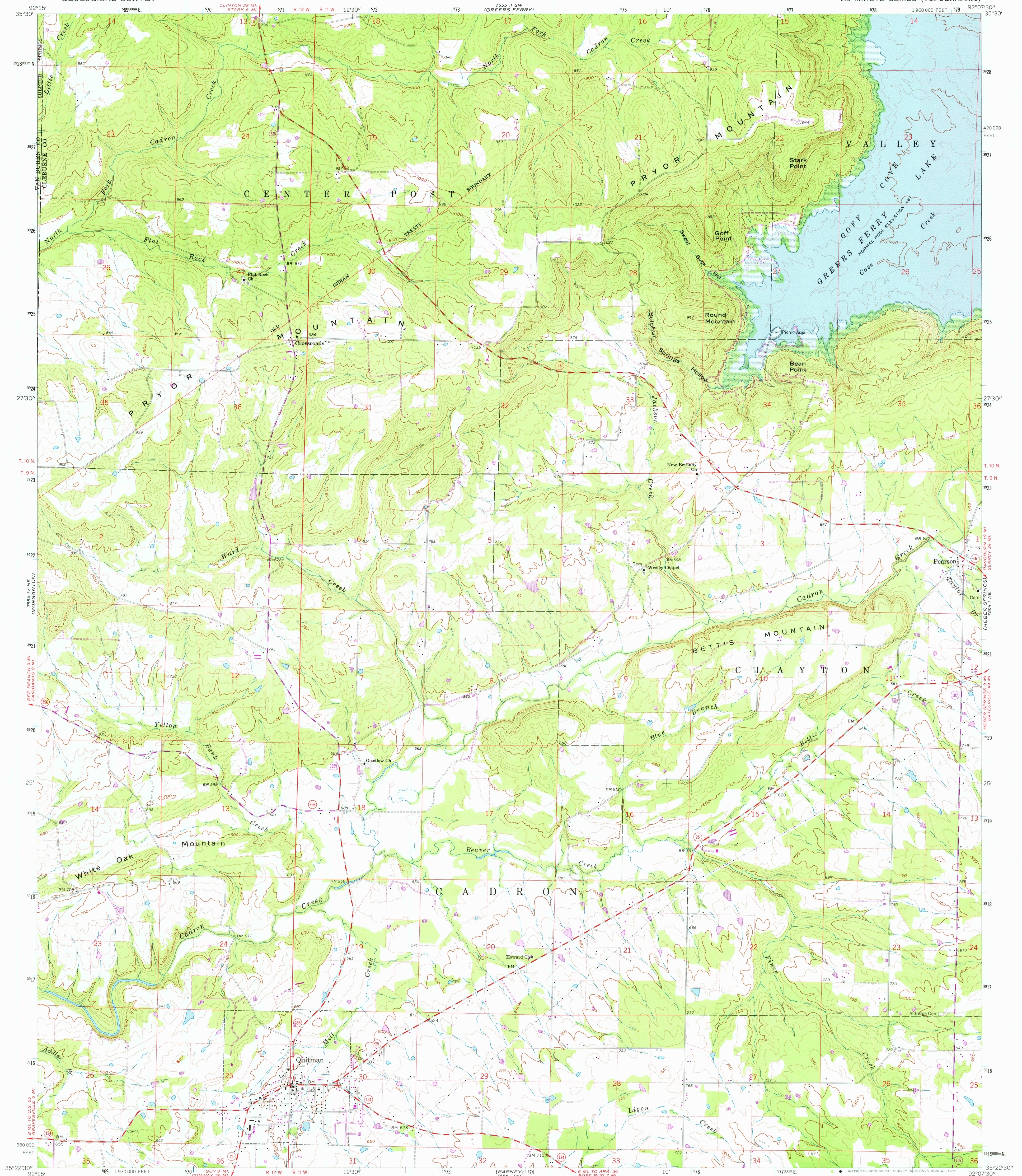


UNITED STATES  
DEPARTMENT OF THE INTERIOR  
GEOLOGICAL SURVEY

QUITMAN QUADRANGLE  
ARKANSAS  
7.5 MINUTE SERIES (TOPOGRAPHIC)



Mapped, edited, and published by the Geological Survey

Control by USGS and USC&GS

Topography by photogrammetric methods from aerial photographs taken 1960. Field checked 1963

Polyconic projection. 1927 North American datum

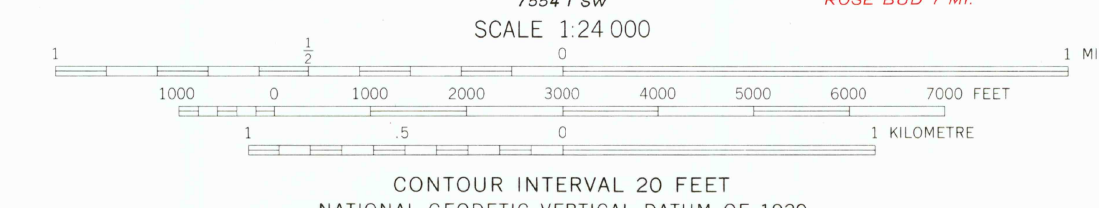
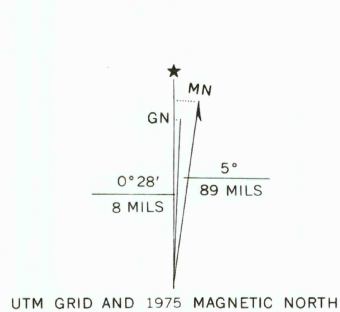
10,000-foot grid based on Arkansas coordinate system, north zone

1000-metre Universal Transverse Mercator grid ticks, zone 15, shown in blue

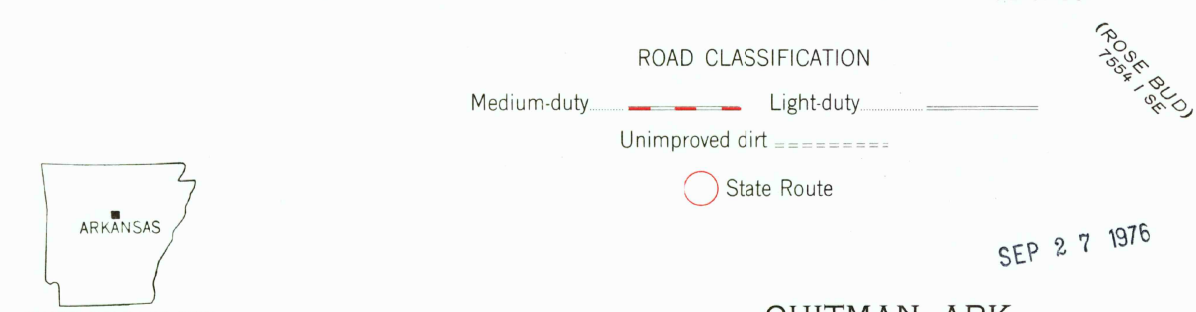
Area covered by dashed light blue pattern is subject to controlled inundation

Fine red dashed lines indicate selected fence and field lines where generally visible on aerial photographs. This information is unchecked

Revisions shown in purple compiled from aerial photographs taken 1975. This information not field checked



THIS MAP COMPLIES WITH NATIONAL MAP ACCURACY STANDARDS  
FOR SALE BY U.S. GEOLOGICAL SURVEY, DENVER, COLORADO 80225, OR RESTON, VIRGINIA 22092  
AND ARKANSAS GEOLOGICAL COMMISSION, LITTLE ROCK, ARKANSAS 72204  
A FOLDER DESCRIBING TOPOGRAPHIC MAPS AND SYMBOLS IS AVAILABLE ON REQUEST



QUITMAN, ARK.  
N3522.5—W9207.5/7.5  
1963  
PHOTOREVISED 1975  
AMS 7554 I NW—SERIES V884

SEP 27 1976