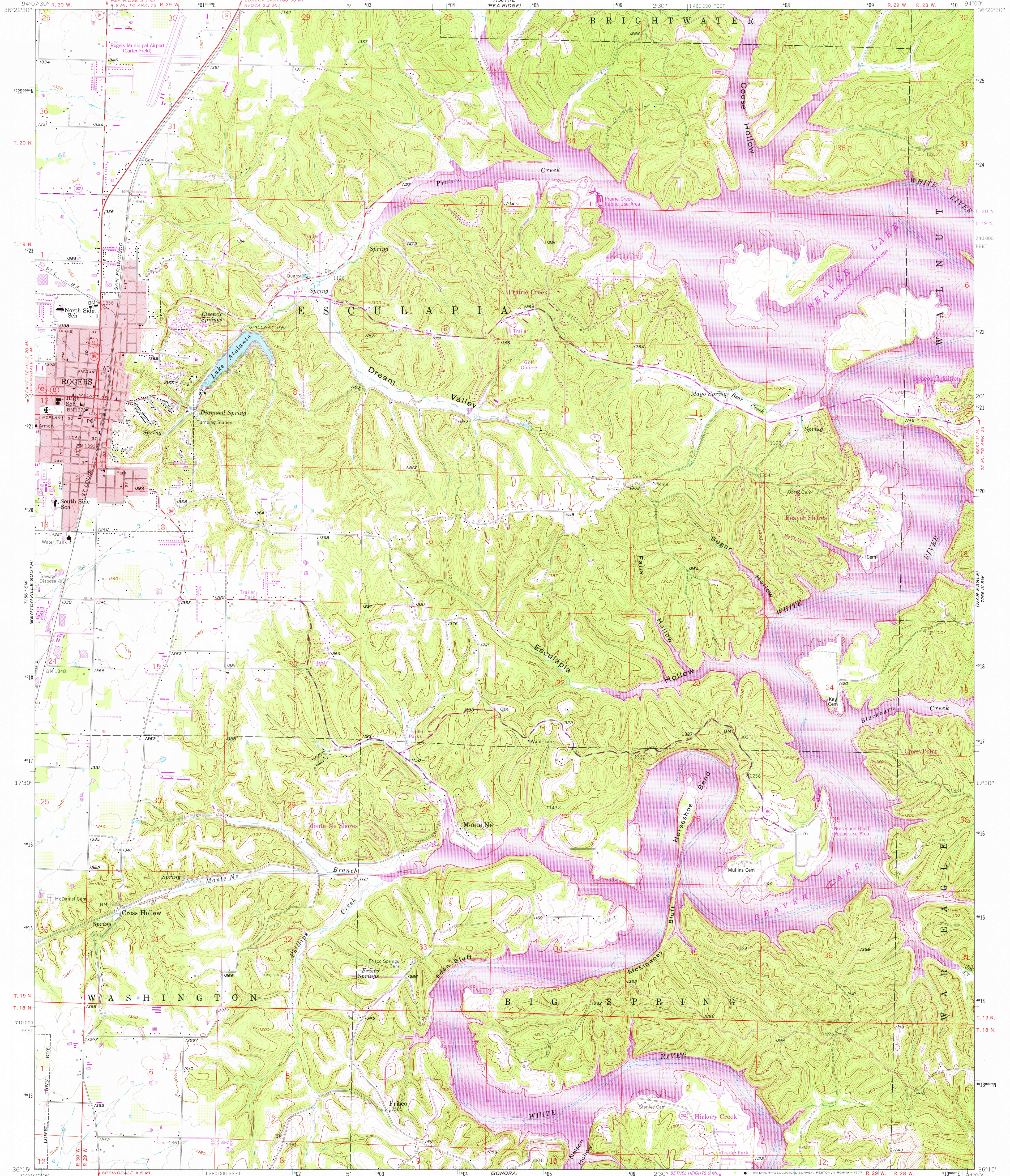
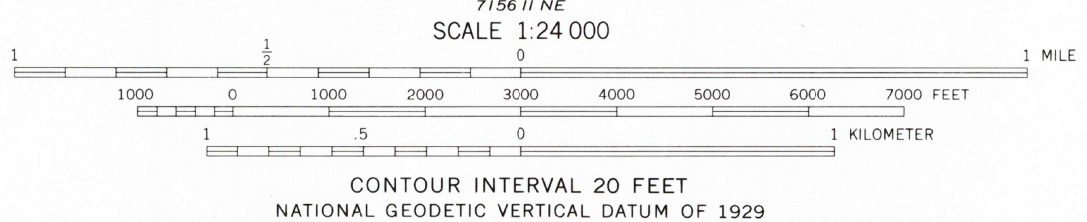
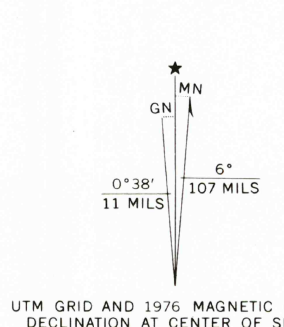


UNITED STATES
DEPARTMENT OF THE INTERIOR
GEOLOGICAL SURVEY

ROGERS QUADRANGLE
ARKANSAS—BENTON CO.
7.5 MINUTE SERIES (TOPOGRAPHIC)



Maped, edited, and published by the Geological Survey
Control by USGS and USC&GS
Topography from aerial photographs by photogrammetric methods
Aerial photographs taken 1957. Field check 1958
Polyconic projection. 1927 North American datum
10,000-foot grid based on Arkansas coordinate system, north zone
1000-meter Universal Transverse Mercator grid ticks,
zone 15, shown in blue
Red tint indicates area in which only
landmark buildings are shown
Unchecked elevations are shown in brown
Revisions shown in purple compiled from aerial photographs
taken 1976. This information not field checked



ROAD CLASSIFICATION
Primary highway, hard surface
Secondary highway, hard surface
Unimproved road
Interstate Route
U. S. Route
State Route

USGS
Historical File
Topographic Division
ROGERS, ARK.
N 3615—W 9400/7.5
1958
PHOTOREVISED 1976
AMS 7156 I SE—SERIES Y884

OCT 20 1977