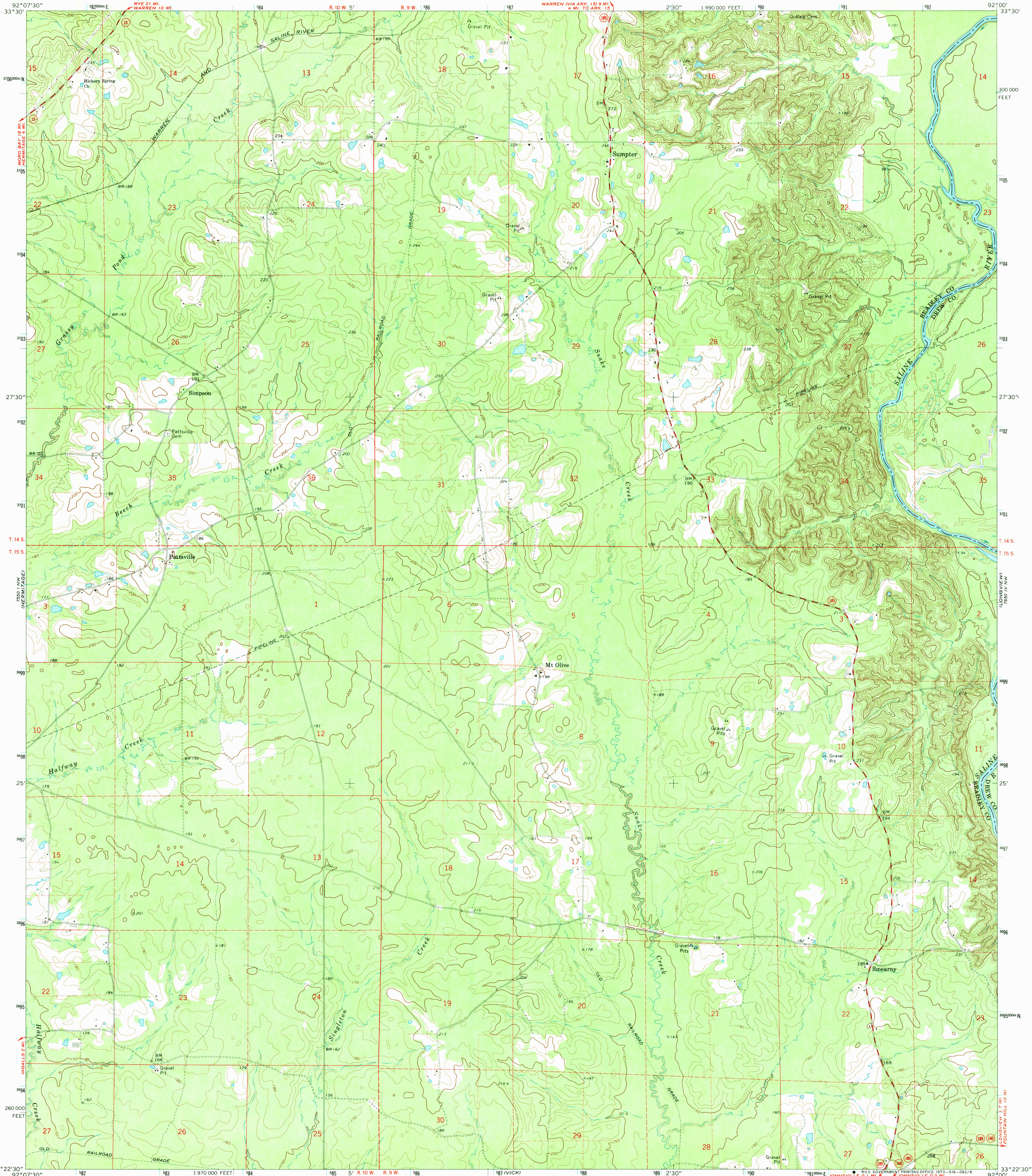
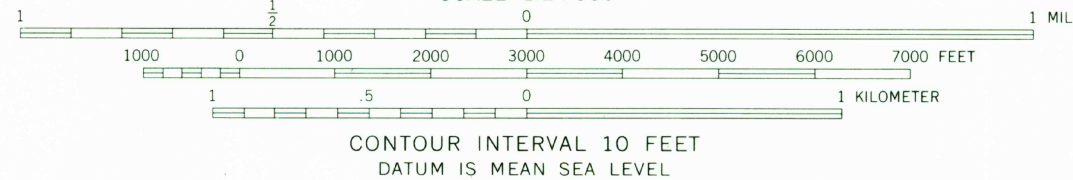
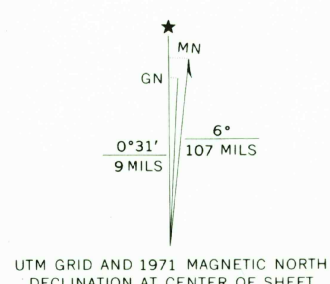


UNITED STATES
DEPARTMENT OF THE INTERIOR
GEOLOGICAL SURVEY

SUMPTER QUADRANGLE
ARKANSAS
7.5 MINUTE SERIES (TOPOGRAPHIC)
NE/4 INGALLS 15' QUADRANGLE



Mapped, edited, and published by the Geological Survey
Control by USGS and USC&GS
Topography by photogrammetric methods from aerial
photographs taken 1970. Field checked 1971
Projection and 10,000-foot grid ticks: Arkansas coordinate
system, south zone (Lambert conformal conic)
1000-meter Universal Transverse Mercator grid ticks,
zone 15, shown in blue. 1927 North American datum
Fine red dashed lines indicate selected fence and field lines where
generally visible on aerial photographs. This information is unchecked



ROAD CLASSIFICATION
Primary highway, hard surface
Secondary highway, hard surface
Interstate Route
Light-duty road, hard or improved surface
Unimproved road
U.S. Route
State Route

SUMPTER, ARK.
NE/4 INGALLS 15' QUADRANGLE
N3322.5—W9200/7.5
1971
AMS 7550 I NE—SERIES V884

THIS MAP COMPLIES WITH NATIONAL MAP ACCURACY STANDARDS
FOR SALE BY U.S. GEOLOGICAL SURVEY, DENVER, COLORADO 80225, OR WASHINGTON, D. C. 20242
AND BY THE ARKANSAS GEOLOGICAL COMMISSION, LITTLE ROCK, ARKANSAS 72201
A FOLDER DESCRIBING TOPOGRAPHIC MAPS AND SYMBOLS IS AVAILABLE ON REQUEST

USGS
HISTORICAL FILE
TOPOGRAPHIC DIVISION

Handwritten notes: 'Hoen 2500 50 plane' and '10/2'.