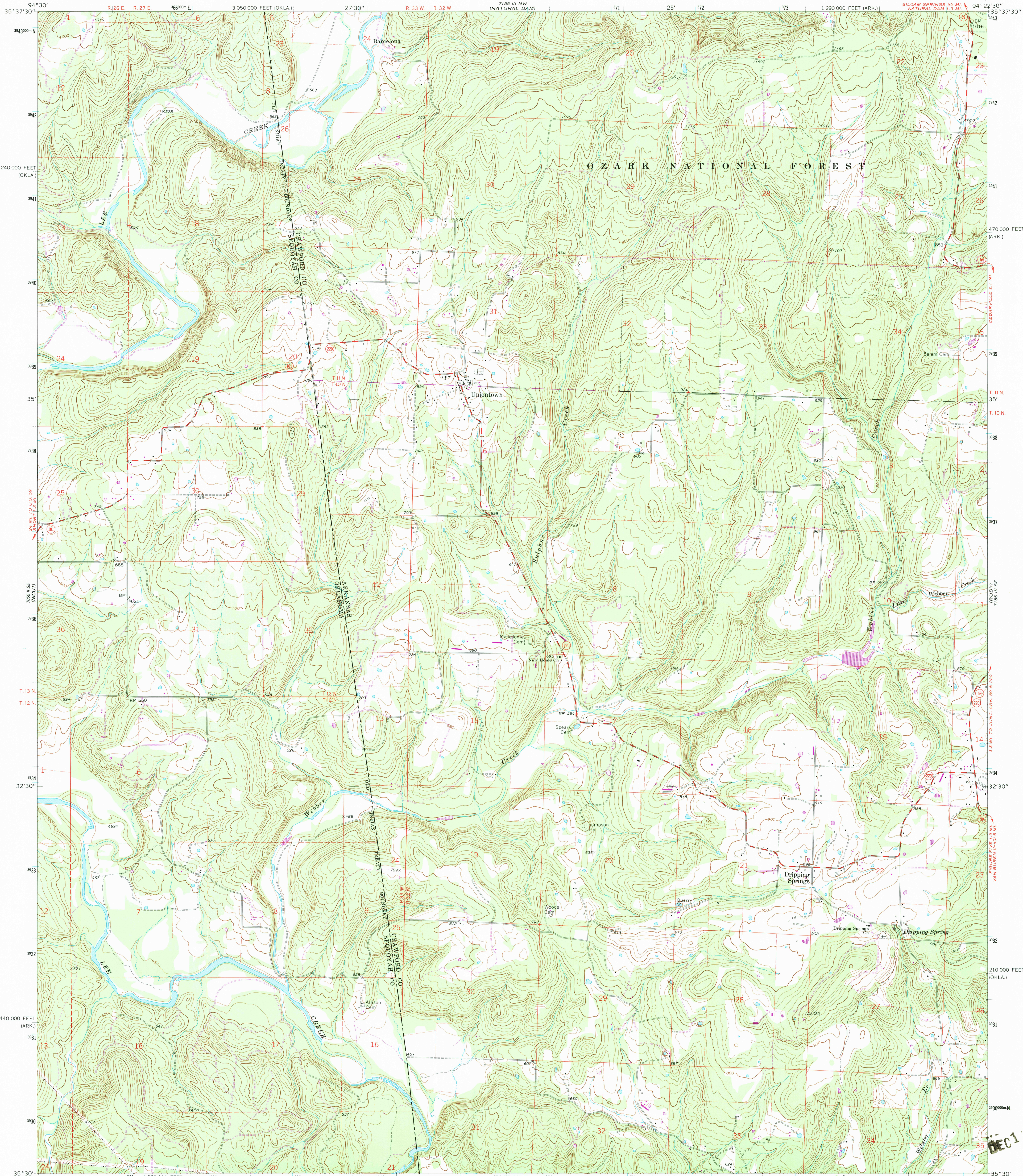


UNITED STATES
DEPARTMENT OF THE INTERIOR
GEOLOGICAL SURVEY

UNIONTOWN QUADRANGLE
ARKANSAS—OKLAHOMA
7.5 MINUTE SERIES (TOPOGRAPHIC)



Mapped, edited, and published by the Geological Survey
Control by USGS and USC&GS
Topography by photogrammetric methods from aerial
photographs taken 1967. Field checked 1969
Polyconic projection. 1927 North American datum
10,000-foot grids based on Arkansas coordinate system, north zone
and Oklahoma coordinate system, north zone
1000-meter Universal Transverse Mercator grid ticks,
zone 15, shown in blue
To place on the predicted North American Datum 1983
move the projection lines 6 meters south and
18 meters east as shown by dashed corner ticks
Revisions shown in purple and woodland compiled in cooperation with
U. S. Forest Service from aerial photographs taken 1980 and other sources
Partially field checked by U. S. Forest Service. Map edited 1983

UTM GRID AND 1983 MAGNETIC NORTH
DECLINATION AT CENTER OF SHEET
There may be private inholdings within
the boundaries of the National or
State reservations shown on this map

SCALE 1:24,000
CONTOUR INTERVAL 20 FEET
NATIONAL GEODETIC VERTICAL DATUM OF 1929

THIS MAP COMPLIES WITH NATIONAL MAP ACCURACY STANDARDS
FOR SALE BY U. S. GEOLOGICAL SURVEY, DENVER, COLORADO 80225, OR RESTON, VIRGINIA 22092.
ARKANSAS GEOLOGICAL COMMISSION, LITTLE ROCK, ARKANSAS 72204.
AND OKLAHOMA GEOLOGICAL SURVEY, NORMAN, OKLAHOMA 73069
A FOLDER DESCRIBING TOPOGRAPHIC MAPS AND SYMBOLS IS AVAILABLE ON REQUEST

ROAD CLASSIFICATION
Secondary highway, all weather, Light-duty road, all weather,
hard surface improved surface
Unimproved road, fair or dry
weather
State Route
RETURN TO:
NMD HISTORICAL MAP ARCHIVES
USGS NATIONAL CENTER, MS-522
RESTON, VA 22092
UNIONTOWN, ARK.—OKLA.
N3530—W9422.5/7.5
1969
PHOTOREVISED 1983
DMA 7155 III SW—SERIES V884