

7154 III SW  
(UNCONFORM)

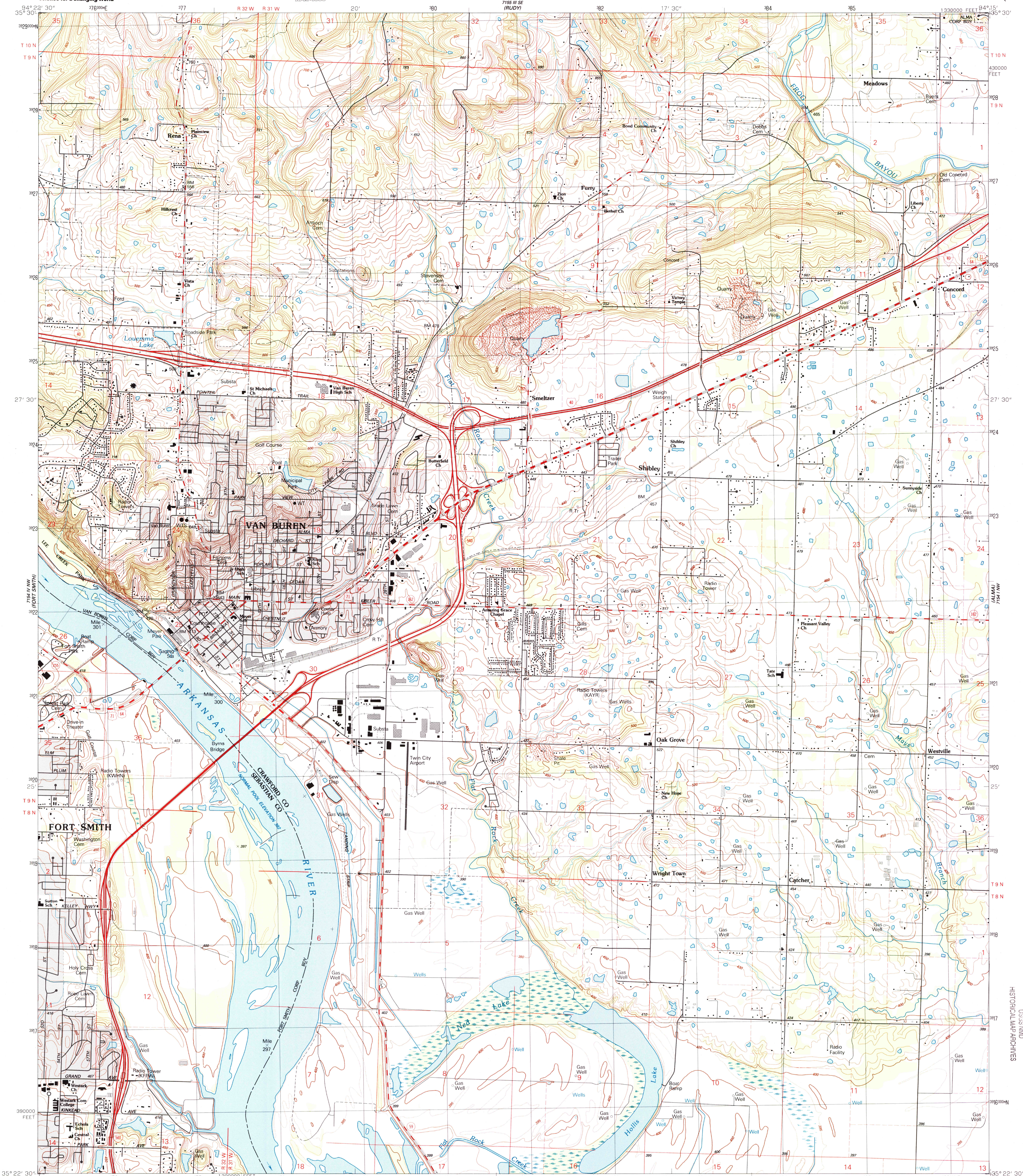


U.S. DEPARTMENT OF THE INTERIOR  
U.S. GEOLOGICAL SURVEY



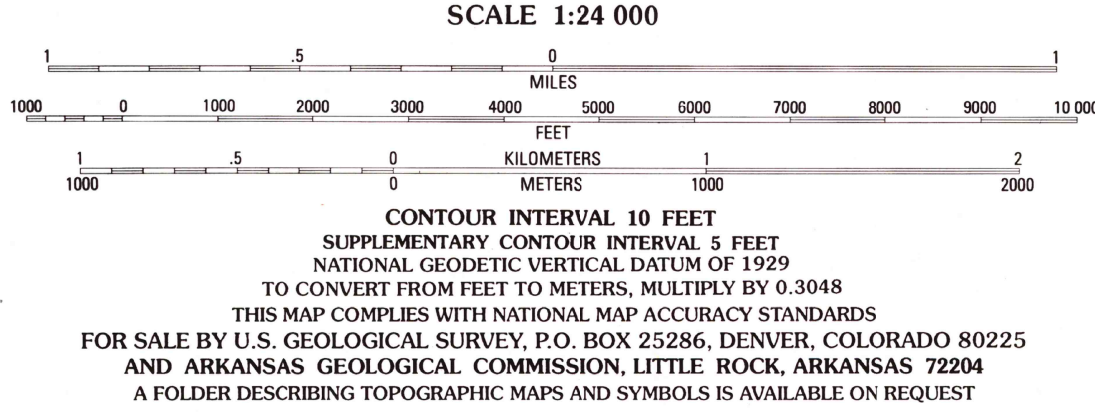
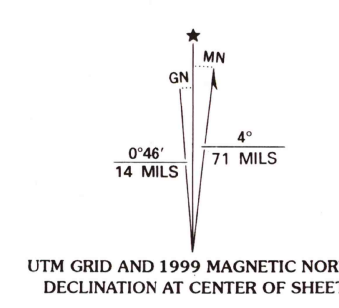
VAN BUREN QUADRANGLE  
ARKANSAS  
7.5 MINUTE SERIES (TOPOGRAPHIC)

7155 III SW  
(MOUNTAINBRO SW)



7154 IV NW  
(FORT SMITH)

Produced by the United States Geological Survey  
Derived from imagery taken 1983 and other sources. Photoinspected using imagery taken 1997; no major culture or drainage changes observed. PLSS and survey control current as of 1985. Boundaries, other than corporate, verified 1999.  
North American Datum of 1927 (NAD 27). Projection and 10 000-foot ticks: Arkansas coordinate system, north zone (Lambert conformal conic).  
1000-meter Universal Transverse Mercator grid, zone 15.  
North American Datum of 1983 (NAD 83) is shown by dashed corner ticks. The values of the shift between NAD 27 and NAD 83 for 7.5-minute intersections are obtainable from National Geodetic Survey NADCON software.



ROAD CLASSIFICATION  
Primary highway, Light-duty road, hard or hard surface .....  
Secondary highway, improved surface .....  
hard surface ..... Unimproved road .....  
Interstate Route U.S. Route State Route

VAN BUREN, ARK.

1997

NIMA 7154 IV NE-SERIES V884

RECEIVED  
AUG 31 1999  
USGS NAD  
HISTORICAL MAP ARCHIVES

