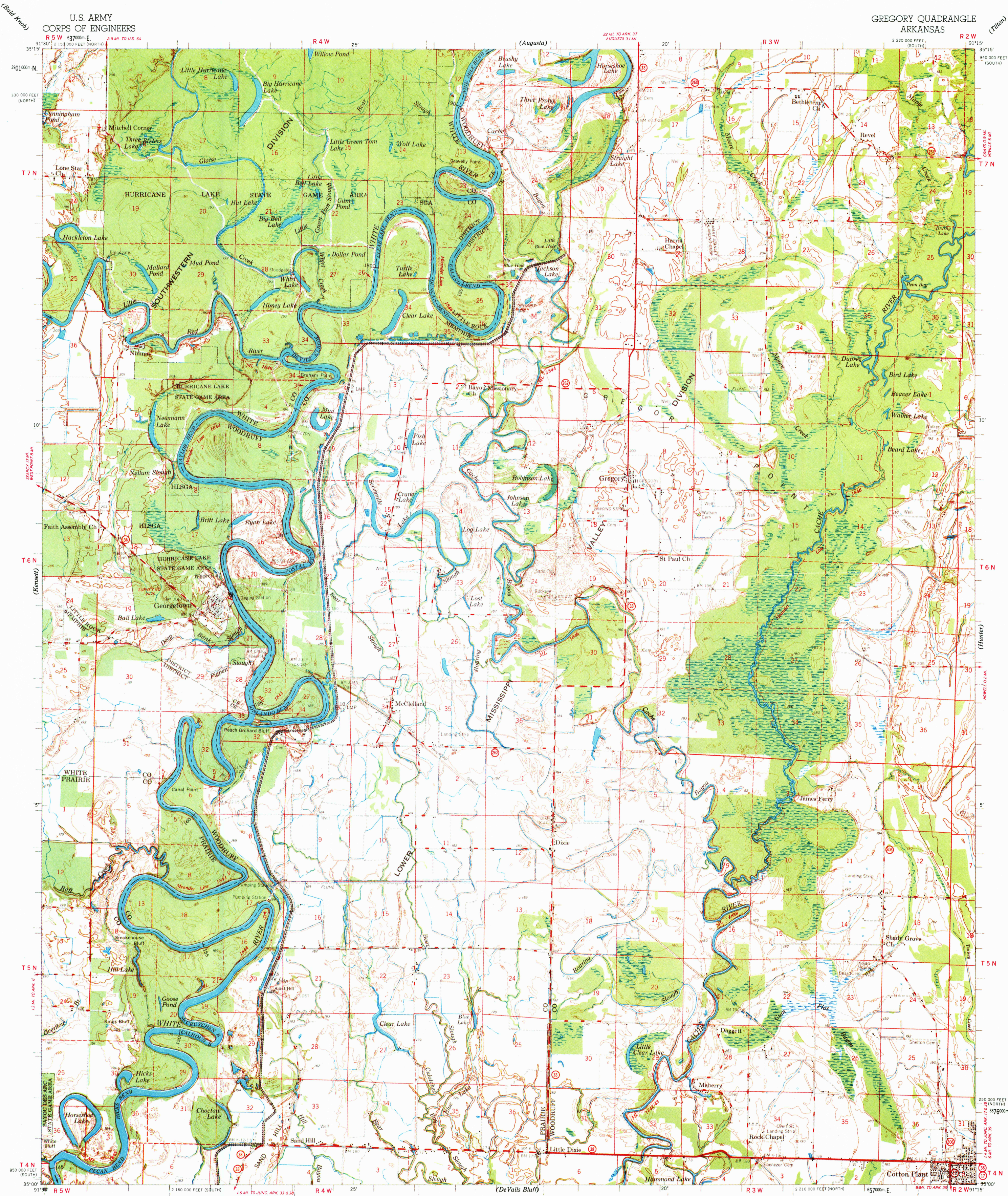
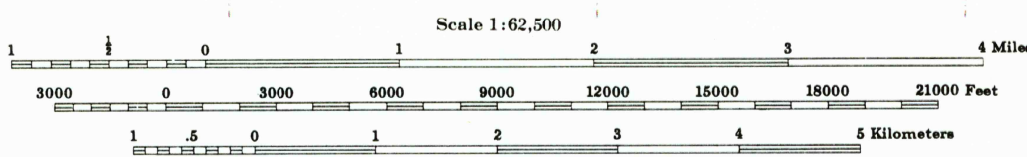


U.S. ARMY
CORPS OF ENGINEERS

GREGORY QUADRANGLE
ARKANSAS



Mapped, edited and published under the direction of the President Mississippi River Commission, by the U.S. Army Engineer District, Memphis, Corps of Engineers.
Compiled in 1971 from U.S.G.S. 7.5 Minute 1968 quadrangles.
Georgetown, Gregory, Gregory SW and Cotton Plant. Scale 1:24,000.
Topography by photogrammetric methods from aerial photographs taken 1966 and 1967.
Field checked 1967 and 1968.
Control by National Geodetic Survey, U.S. Geological Survey and the U.S. Army Engineer District, Memphis, Corps of Engineers.
Polyconic Projection 1927 North American Datum.
Descriptions, elevations and geodetic positions of permanent survey marks may be obtained from the U.S. Army Engineer District, Memphis, Corps of Engineers, Memphis, Tennessee.
Political boundaries are shown according to best available information.
This map complies with National Map Accuracy Standards.
Work under Flood Control Act shown as of 1968.

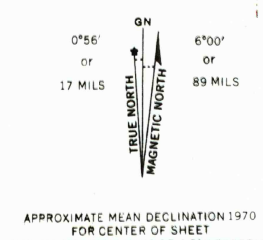


Contour Interval 5 feet

DATUM IS MEAN SEA LEVEL.

ONE THOUSAND METER UNIVERSAL TRANSVERSE MERCATOR GRID, ZONE 15.
15 INDICATED BY TICKS OUTSIDE THE NEATLINE.
TEN THOUSAND FOOT ARKANSAS STATE GRID, NORTH ZONE.
10 INDICATED BY TICKS OUTSIDE THE NEATLINE.
SOUTH ZONE, BY DASH DOT DASH TICKS OUTSIDE THE NEATLINE.

FOR SALE BY U.S. GEOLOGICAL SURVEY, RESTON, VIRGINIA 22092
A FOLDER DESCRIBING TOPOGRAPHIC MAPS AND SYMBOLS IS AVAILABLE ON REQUEST



Distances above mouth of White River
are shown at 5 mile intervals.

INTERIOR- GEOLOGICAL SURVEY, RESTON, VIRGINIA
LEGEND
Levee
Secondary Levee
Retard and Dikes
Revetment
Levee Mile Post
Levee Station
Towhead
Gaging Station
LMP
25
TM
6
ROAD CLASSIFICATION
Heavy-duty
Medium-duty
Light-duty
Unimproved dirt
Interstate Route
U.S. Route
State Route

This area also covered by USGS 7.5 minute quadrangles: Georgetown, Gregory, Gregory SW and Cotton Plant. Scale 1:24,000

GREGORY, ARK.

EDITION OF 1972
N3500-W9115/15

This map was reproduced by electronic color scanning of an earlier printing

RETURN TO:
NMD HISTORICAL MAP ARCHIVES
USGS NATIONAL CENTER, MS-522
RESTON, VA 22092

JAN 20 1982

1095